

SHARP

AL-2035

Digital Multifunctional System



Desktop Multifunctional System with Automatic Document Feeder and Duplexing



COPY

PRINT

COLOUR SCAN

SHARPDESK



Speedy Copying with SOPM

The AL-2035's Scan Once/Print Many (SOPM) function stores a scanned original into memory to quickly produce up to **99 copies** of each page at a continuous copy rate of 20 cpm. Plus, its quick first copy time of **8.0 seconds** saves valuable time when performing multiple short-run jobs.



Timesaving 50-Sheet SPF

The AL-2035 comes standard with an SPF (single pass feeder). It eliminates the tedious task of placing pages by hand and allows you to automatically make copies from a stack of up to 50 pages.



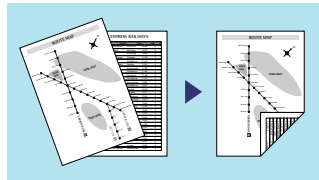
600-dpi Host-Based Printing

Featuring a built-in PC interface, the AL-2035 can print from computers running the latest and most commonly used Windows® operating systems at up to 15 ppm. A number of convenient printing functions (N-up, Fit to Page, and Watermarks) are also available.



Built-in Duplex Module

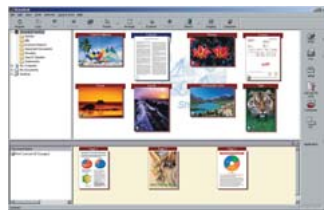
The AL-2035 can make two-sided copies and printouts using its built-in duplex module, effectively reducing paper costs as well as saving filing space. Auto duplexing is available for paper weights up to 128 g/m².



Full-Colour Scanning

The AL-2035 has 600 x 1200-dpi full-colour scanning capability, complete with powerful utility software. Operation is quick and easy—simply press the Scan button, select an application, and press Start. Up to six pre-registered applications are available, including Sharpdesk, e-mail, Microsoft® Word, OCR, PC-fax, and a different application of your choice. **Button Manager** allows you to change/assign these destination applications and scan settings. With support for the **TWAIN** standard, the AL-2035 lets you import scanned images to a commercially available TWAIN-compliant application.

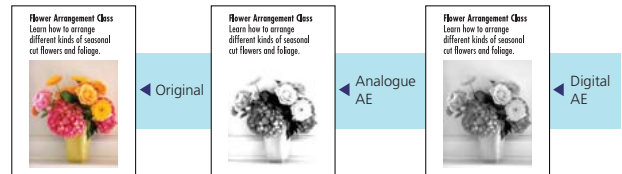
Sharpdesk 3.2 desktop document management software lets you easily organise, search, edit, and distribute your scanned documents. And **Sharpdesk Composer** combines different types of files into a single document through simple drag-and-drop operation.



Sharpdesk screen

Superb Image Quality

600-dpi resolution and 256-level greyscale ensure finely detailed reproduction, while **Digital Auto Exposure Control** provides optimum copy contrast. For the best results, users can select **Text mode** for text-only originals or **Photo mode** that gives detailed, high-quality reproduction of photos and delicate halftone images.



Other Key Features

- Wide zoom range from 25% to 400% with 5 preset ratios
- USB 2.0 port
- 250-sheet paper tray + 50-sheet multi-bypass feeder
- Cost-efficient Toner Save mode
- Pre-Heat/Auto Power Shut-Off modes
- Space-saving wingless design

Specifications (tentative)

GENERAL	
Type	Desktop
Paper size	Max. A4 (8 1/2" x 14"), min. A6 (5 1/2" x 8 1/8")
Paper capacity	300 sheets (250 + 50)
First copy time*1	8.0 seconds
Warm-up time	— (Auto Start mode)*2
Memory	16 MB
Power requirements	Rated local AC voltage ±10%, 50/60 Hz
Power consumption	Max. 1.0 kW
Dimensions (W x D x H)	518 x 445 x 358 mm (20 1/2" x 17 5/8" x 14 1/8")
Weight	Approx. 17.2 kg (37.9 lbs) without developer
COPIER	
Copy speed	Max. 20 cpm (A4, 8 1/2" x 11")
Original size	Max. A4 (8 1/2" x 14")
Continuous copy	99
Resolution	Scan: 600 x 600 dpi (Photo mode), 600 x 300 dpi*3 (AE/Text mode) Print: 600 x 600 dpi
Gradation	256 levels
Zoom range	25% to 400% in 1% increments (50% to 200% using SPF)
Preset copy ratios	5 ratios (3 reduction + 2 enlargement)
PRINTER (GDI)	
Print speed	Max. 15 ppm (A4, 8 1/2" x 11")
Resolution	600 dpi
Interface	USB 2.0
Supported OS	Windows® 98/Me, Windows® 2000 Professional, Windows® XP Home Edition/Professional, Windows Vista®
COLOUR SCANNER	
Scan method	Push scan (via control panel), pull scan (TWAIN-compliant application)
Resolution	600 x 1,200 dpi (setting range: 50 to 9,600 dpi)
Protocols	TWAIN, WIA (Windows® XP and Windows Vista®), STI
Interface	USB 2.0
Supported OS	Windows® 98/Me, Windows® 2000 Professional, Windows® XP Home Edition/Professional, Windows Vista®
Scanner utilities	Button Manager, Sharpdesk 3.2

*1: When feeding A4 (8 1/2" x 11") sheets from paper tray, in Auto Exposure mode.

*2: Auto Start mode allows the user to go to reserved copy by pushing the start key while the machine is turning on after being off or in energy-saving mode. Copying starts automatically once the machine has turned on.

*3: Can be changed to 600 x 600 dpi via user setting.

• Design and specifications are subject to change without prior notice.

• Windows and Windows Vista are registered trademarks of Microsoft Corporation in the United States and/or other countries.

• All other brand names and product names may be trademarks or registered trademarks of their respective owners.

• The Energy Star logo is a certification mark and may only be used to certify products that have been determined to meet the Energy Star programme requirements. Energy Star is a US registered mark. The Energy Star guidelines apply to products only in the US, Europe, Australia, New Zealand, and Japan.