

# Sharpdesk Mobile V2.1 Operation Manual

## For iPad

SHARP CORPORATION

## Table of Contents

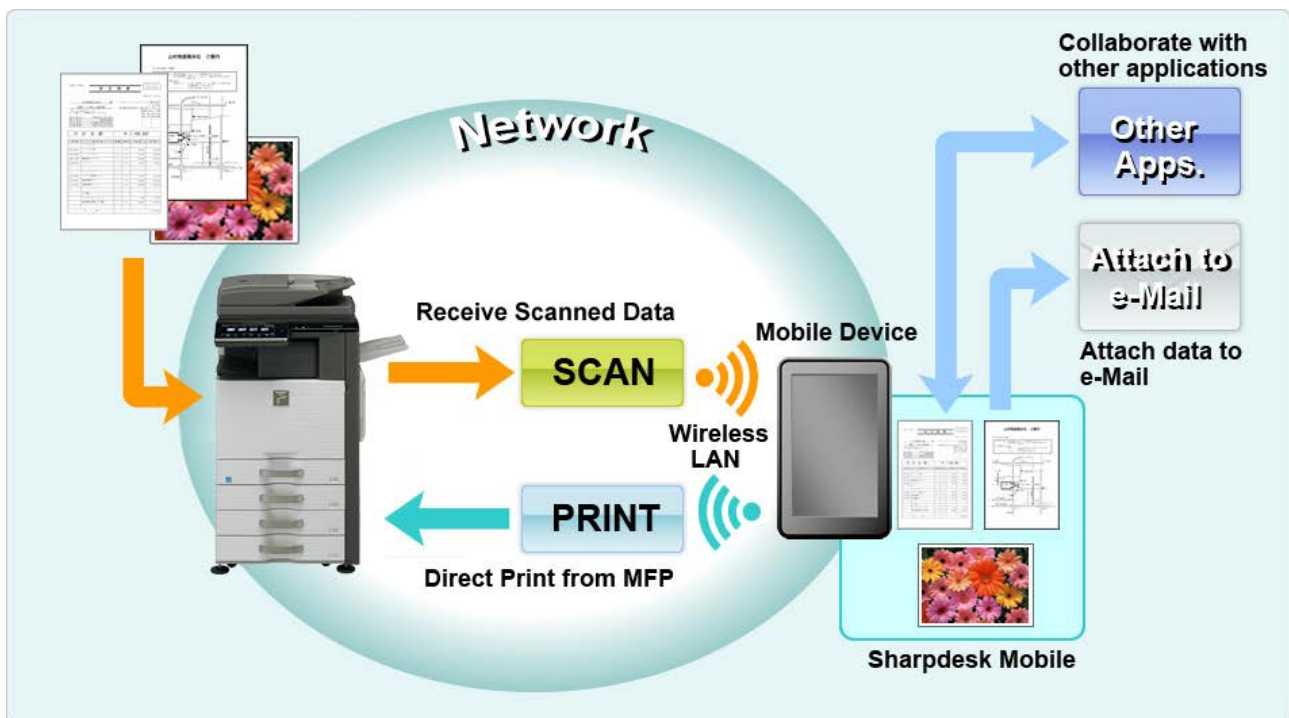
<b>1</b>	<b>Overview .....</b>	<b>4</b>
<b>2</b>	<b>Usage Notes .....</b>	<b>5</b>
<b>3</b>	<b>Install and Start .....</b>	<b>6</b>
<b>4</b>	<b>Printer/Scanner Settings .....</b>	<b>7</b>
<b>4.1</b>	<b>Register Printers/Scanners on this Application.....</b>	<b>7</b>
<b>4.1.1</b>	<b>Find Printers/Scanners .....</b>	<b>7</b>
<b>4.1.2</b>	<b>Add Printers/Scanners Manually .....</b>	<b>8</b>
<b>4.2</b>	<b>View and Edit Printer/Scanner Information .....</b>	<b>10</b>
<b>4.3</b>	<b>Move or Delete Printer/Scanner in the List.....</b>	<b>12</b>
<b>4.3.1</b>	<b>Reorder the Printer/Scanner List.....</b>	<b>12</b>
<b>4.3.2</b>	<b>Delete Printers/Scanners.....</b>	<b>13</b>
<b>5</b>	<b>User Settings .....</b>	<b>14</b>
<b>6</b>	<b>Application Settings .....</b>	<b>16</b>
<b>7</b>	<b>E-mail Settings .....</b>	<b>18</b>
<b>8</b>	<b>Scan.....</b>	<b>19</b>
<b>8.1</b>	<b>Scan from Your Mobile Device.....</b>	<b>20</b>
<b>8.2</b>	<b>Scan from the Scanner Operation Panel.....</b>	<b>26</b>
<b>9</b>	<b>Print .....</b>	<b>27</b>
<b>9.1</b>	<b>Print a Stored Document in this Application .....</b>	<b>27</b>
<b>9.1.1</b>	<b>Print an Encrypted PDF File.....</b>	<b>31</b>
<b>9.2</b>	<b>Print a Photo Image.....</b>	<b>33</b>
<b>9.3</b>	<b>Print Web Pages.....</b>	<b>34</b>
<b>9.4</b>	<b>Print E-mails.....</b>	<b>36</b>
<b>9.4.1</b>	<b>Printing file attachments .....</b>	<b>39</b>
<b>10</b>	<b>Attach to E-mail.....</b>	<b>40</b>
<b>11</b>	<b>Send to Application .....</b>	<b>42</b>
<b>12</b>	<b>Manage Files.....</b>	<b>44</b>
<b>12.1</b>	<b>Reordering Files/Folders .....</b>	<b>45</b>
<b>12.2</b>	<b>Search Files/Folders.....</b>	<b>46</b>
<b>12.3</b>	<b>Preview a File .....</b>	<b>47</b>
<b>12.4</b>	<b>Rename a File/Folder.....</b>	<b>48</b>
<b>12.5</b>	<b>Move Files/Folders .....</b>	<b>50</b>

<b>12.6 Delete Files/Folders</b> .....	51
<b>12.7 Create a Folder</b> .....	53
<b>13 Print from External Application</b> .....	54

# 1 Overview

This product is an application that

- Receives, previews and stores scanned documents from your scanner to your mobile device
- Prints the documents and photos stored in your mobile device, e-mails received in your mobile device and Web pages browsed from your mobile device to your printer
- Attaches the scanned documents to e-mail, or sends the documents to other applications installed in your mobile device



## 2 Usage Notes

- Design and specifications are subject to change without notice.
- Please see the following support web site for the latest information of this application.  
[http://sharp-world.com/products/copier/docu\\_solutions/mobile/sharpdesk\\_mobile/](http://sharp-world.com/products/copier/docu_solutions/mobile/sharpdesk_mobile/)
- Your mobile device must be connected to wireless network.
- This application can handle the following file formats:
  - JPEG, TIFF, PNG and PDF (including compact PDF and encrypted PDF)
  - Maximum length of file names of these file formats that this application can handle is 200 characters.
  - Preview and thumbnail image are not available for some of the file formats.

File format		Viewable and Rotatable
Encrypted PDF		No
Unencrypted PDF	PDF scanned by SHARP scanner (including Scan Accessory Kit)	Yes* <sup>1</sup>
	Others	Yes* <sup>2</sup>
TIFF		Yes
JPEG		Yes
PNG		Yes

\*1 : Compact PDF and Bk text enhanced PDF files which are larger than A4/letter size cannot be rotated in preview mode.

\*2 : Previewed image is not rotatable. Thumbnail is not viewable.

- This document explains operations on the landscape screen of iPad (iOS 5.1.1).
- This application uses Bonjour, SNMP, FTP, HTTP and Raw to discover scanners and printers on the network, receive scanned data from scanners and print to printers.

### 3 Install and Start

Install Sharpdesk Mobile application on your mobile device.

I. Install the application from the App Store.

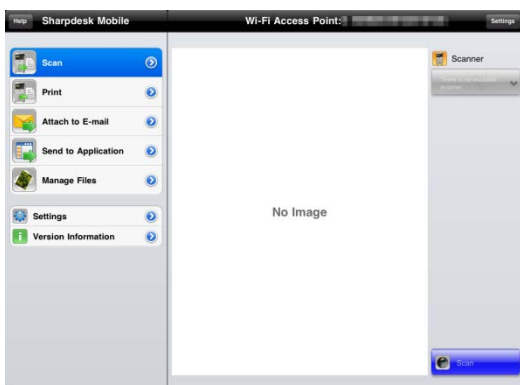
Sharpdesk Mobile application can be found under “Utilities.” Or, type in “Sharpdesk Mobile” in a keyword search box to locate the application.

II. After installing this application, tap the “Sharpdesk Mobile” icon to start.

End User License Agreement is displayed for the first time. If you agree to the terms of the agreement, tap “Agree.”

Note: If you disagree, you cannot use this application even for a trial purpose. Once agreed, the End User License Agreement is no longer displayed.

III. The main screen is displayed.

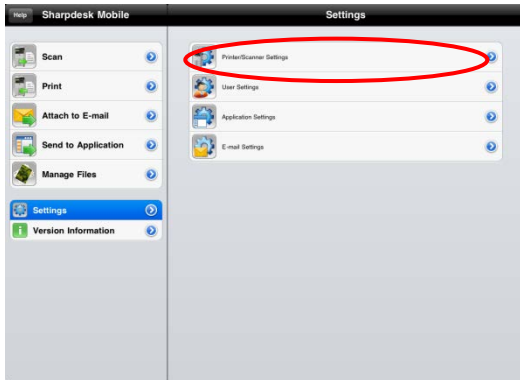


Note: If no scanners are registered, a popup message “There is no available scanner” is displayed when starting the application.

## 4 Printer/Scanner Settings

Set up printers to print from and scanners to send data to this application.

Tap “Settings” on the main screen, and then tap “Printer/Scanner Settings”.



### 4.1 Register Printers/Scanners on this Application

Printers and scanners must be registered to print from and scan document to this application.

When printers/scanners are connected to a local network, you can automatically discover printers/scanners and register them.

When printers/scanners are not connected to a local network or cannot be discovered automatically, you can manually register them.

#### 4.1.1 Find Printers/Scanners

1. Tap “Find Printers/Scanners”. Printers and scanners on the network are automatically discovered.



Note: Printers/scanners must be on the same network segment where your mobile device is connected. If you wish to use a printer/scanner on a different network segment, you may manually add a printer/scanner. Go to “Add Printers/Scanners Manually” (Section 4.1.2) for further instruction.

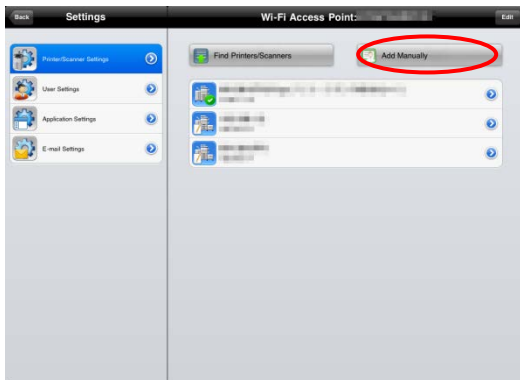
- II. Discovered printers and scanners are displayed in a list.  
“Product Name” and “Location” information retrieved from a printer/scanner is displayed. (“Product Name(Location)” or “Product Name(IP Address)” is displayed above the “IP address”).



Note: The display format (“Product Name(Location)” or “Product Name(IP Address)”) in the list can be configured in “Application Settings” (See chapter 6). “SHARP” which is included in the “Product Name” retrieved from the printer/scanner is not displayed.

### 4.1.2 Add Printers/Scanners Manually

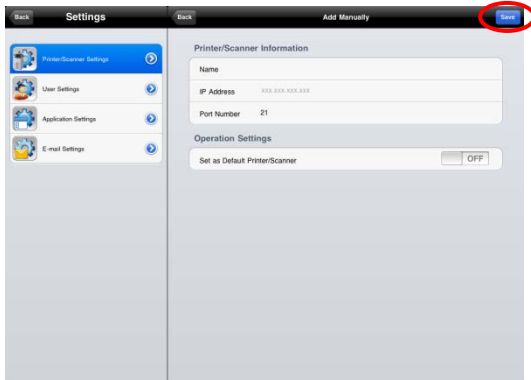
- I. Tap “Add Manually”.





II. The following items can be set.

Tap “Save” to save the settings. If you wish to cancel, tap “Back” to go back to the previous screen.





Item	Description	
Name	Enter printer/scanner name that you wish to add. If Name is not entered, IP address is set as the name.	
IP Address	Enter printer/scanner IP address. This is a required field. Note: The IP address that has already been added manually cannot be entered.	
Port Number	Enter a port number for the printer/scanner. This is a required field.  Port Number is necessary to print from this application. Enter the same port number as configured on the printer. If different port number is entered, this application cannot print to the printer.  To check the port number in the printer, see printer/scanner's web page.	
	If “Use Raw Print” in “Application Settings” is set to “O(OFF)”	[Setting for Print from the PC] on the printer's Web page. The default port number for both printer and this application is 21.
	If “Use Raw Print” in “Application Settings” is set to “I(ON)”	See [Network Settings]-[Print Port Settings]-[RAW] tab in the printer's Web page. The default port number is 9100.
Set as Default Printer/Scanner	When “I(ON)” is selected, the selected printer/scanner is set as a default printer/scanner for “Print” or “Scan”.  Note: “Set as Default Printer/Scanner” cannot be configured if “Auto Printer/Scanner Selection” is set to “I(ON)” under “Application Settings” (see chapter 6).	

## 4.2 View and Edit Printer/Scanner Information

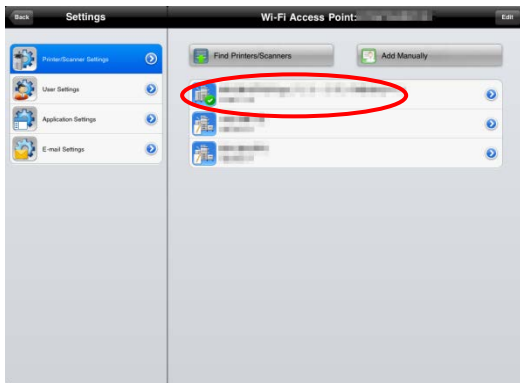
You can view and edit information of the printer/scanner registered in this application.

Tap “Settings” on the main screen, and then tap “Printer/Scanner Settings” to display a list of registered printers/scanners.



The icon  indicates automatically added printers/scanners. The icon  indicates manually added printers/scanners.

I. Select a printer/scanner to view its information.



II. The information about the selected printer/scanner is displayed. The items displayed here are available in “Add Printers/Scanners Manually” (Section 4.1.2).



Note: For automatically added printers/scanners, IP address is not editable. For manually added

printers/scanners, Product Name and Location are not editable. Product Name and Location fields are auto-filled when the application establishes an initial contact with the printer/scanner.

When “Scan from Your Mobile Device” feature is available, the following information and options are displayed.



The following additional settings are available under “Operation Settings”.

Tap “Save” to save the settings.

Item	Description
Scan from your mobile device	When set to “I(ON)”, configure scan settings and scan from your mobile device (see section 8.1).
Display Name	Display Name is displayed along with a Verification Code on both scanner operation panel and your mobile device to ensure your target scanner.
Automatically generate verification codes	When set to “I(ON)”, it automatically generate a Verification Code. When set to “O(OFF)”, you need to enter a code in the “Verification Code” field.
Verification Code	Verification Code is displayed along with Display Name on both scanner operation panel and your mobile device to ensure your target scanner.
Reset scan parameters	Tap this if you wish to reset scan parameters configured at the last scan operation.


### 4.3 Move or Delete Printer/Scanner in the List

In the printer/scanner list, the printer/scanner list can be reordered and selected printers/scanners can be removed from the list.

Tap “Edit” to manage printer/scanner list.



#### 4.3.1 Reorder the Printer/Scanner List

Tap and hold  on the right of the printer/scanner list to reorder, then drag it to the desired location.



Tap and hold, then drag it to the desired location

When it is held down, the printer/scanner can move, so move it up or down while holding down your finger to reorder it.

### 4.3.2 Delete Printers/Scanners

Tap , then tap “Delete” to delete the printer/scanner from the list.

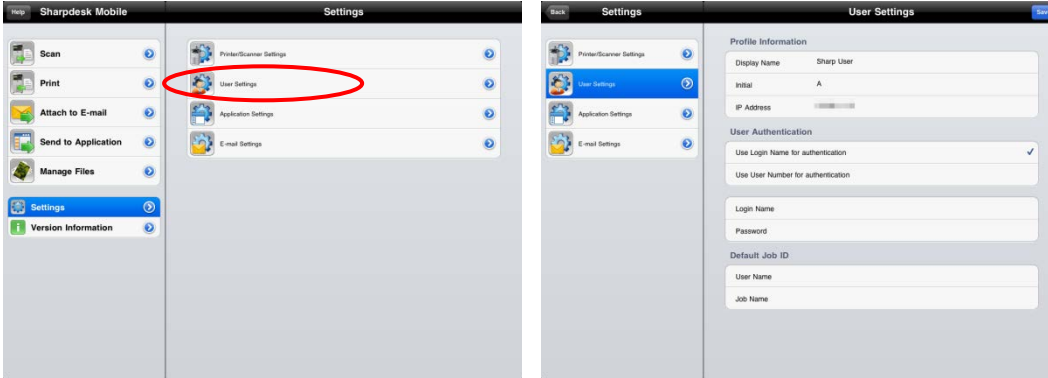


Deleted printers/scanners can be added again. Go to “Find Printers/Scanners” or “Add Printers/Scanners Manually” (Section 4.1).

## 5 User Settings

Set up user information for this application.

Tap “Settings” on the main screen, and then tap “User Settings”.



The following settings are available:

Tap “Save” to save the settings.

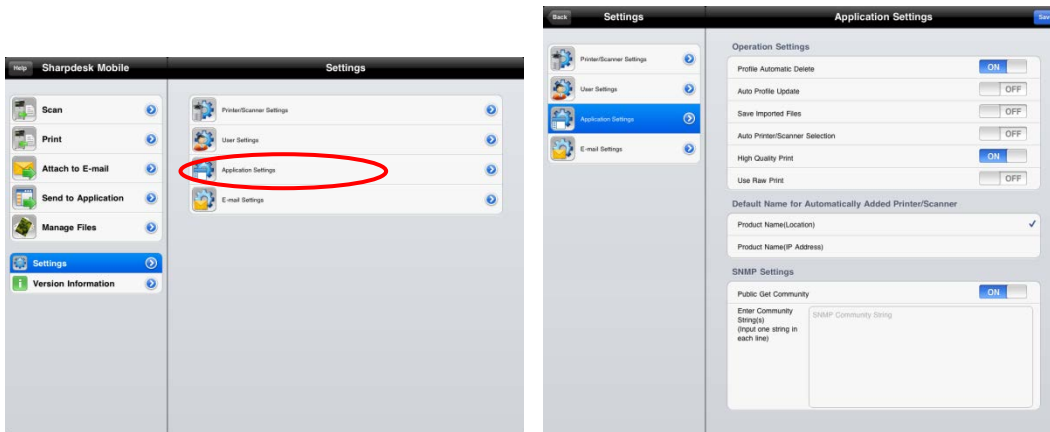
Profile Information: They are required settings to register a scanner for scan operations	
Item	Description
Display Name	Display Name will be displayed in the scanner address book as a scan destination. The default display name is the "Name" configured in "General" - "About" in your mobile device's settings.
Initial	Initial is used for a sort key to display “Display Name” in the scanner address book.
User Authentication: They are required settings when user authentication is enabled on the printer	
Item	Description
Use Login Name for authentication	Select this when Login Name is used for user authentication on the printers. Type in “Login Name” and “Password”.
Login Name	Enter your login name used for user authentication on the printers.
Password	Enter your password used for user authentication on the printers.
Use User Number for authentication	Select this when User Number is used for user authentication on the printers. Type in “User Number”.
User Number	Enter your user number used for user authentication on the printers.

Default Job ID: Printers use the values entered in here to display “User Name” and “Job Name” on the operation panel.	
Item	Description
Use Login Name as User Name	If this setting is set to “ON”, the User Name displayed on the printer operation panel is fixed to the “Login Name” setting in the User Authentication Settings described above.
User Name	Enter a user name which will be displayed on printer operation panel. If this is not set, the printer uses the value, “SharpdeskM User”.
Job Name	Enter a job name which will be displayed on printer operation panel. If this is not set, the printer uses the name of the file to be printed.

## 6 Application Settings

Set up operation settings for the application.

Tap “Settings” on the main screen, and then tap “Application Settings.”



The following settings are available:

Tap “Save” to save the settings.

Operation Settings	
Item	Description
Profile Automatic Delete	When "I(ON)" is selected, delete your mobile device profile from the address book on the scanner after scanning is completed.
Auto Profile Update	When set to "I(ON)", automatically overwrite the destination (profile) that was registered at last scanning.
Save Imported Files	When set to "I(ON)", keep a file received from other application(s) for printing.
Auto Printer/Scanner Selection	When set to "I(ON)", automatically set a default printer/scanner in the connected wireless network (SSID).
High Quality Print	Set this to "I(ON)" for higher quality printing.
Use Raw Print	When "I(ON)" is selected, use Raw port (default port number is 9100) instead of FTP port (default port number is 21) for printing.
Default Name for Automatically Added Printer/Scanner	Display format can be set for the printers/scanners that are automatically added. "Product Name(Location)" or "Product Name(IP Address)" can be selected.



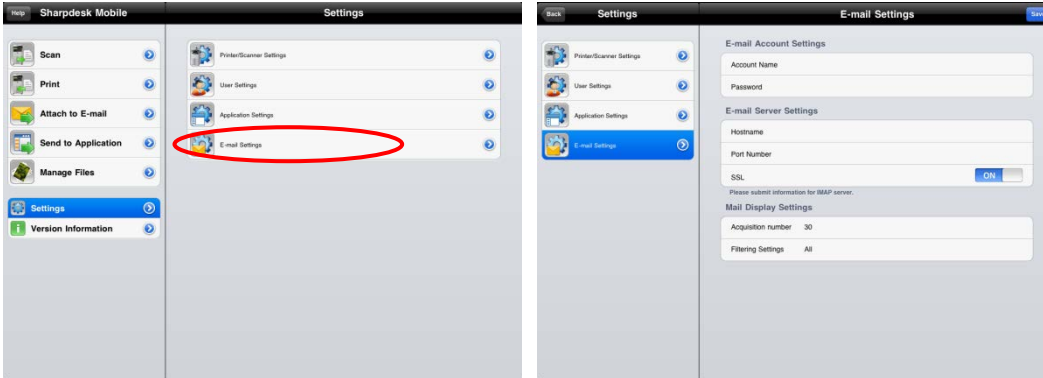
Operation Settings	
Item	Description
Retention Settings	<p>Tap "Retention" to hold a print job as a file on the printer's hard disk, allowing the job to be printed from the printer operation panel when needed. Set "Hold Only" to "ON" to enable this feature. Main Folder is specified as the location of the held file.</p> <p>If "Specify Password" is set to "ON", the password (a number from 5 to 8 digits) allows a confidential job to be stored on the printing device and the file cannot be printed unless the correct password is entered at the printing device's operation panel.</p> <p>This setting specifies the default value for the "Print" setting (see Chapter 9).</p> <p>Note: You cannot specify retention for Encrypted PDF. It can be securely printed by completing the operations explained in section 9.1.1.</p>

SNMP Settings: if you need assistance, ask your network administrator.	
Item	Description
Public Get Community	Set this to "Off" when the network uses other than default SNMP GET Community string.
Enter Community String(s)	Enter the string(s) that are used in the network in "Enter Community String(s)". Up to 10 strings can be set.

## 7 E-mail Settings

Set up your e-mail account information to print e-mails (see section 9.4) from this application.

Tap "Settings" on the main screen, and then tap "E-mail Settings".



The following settings are available:

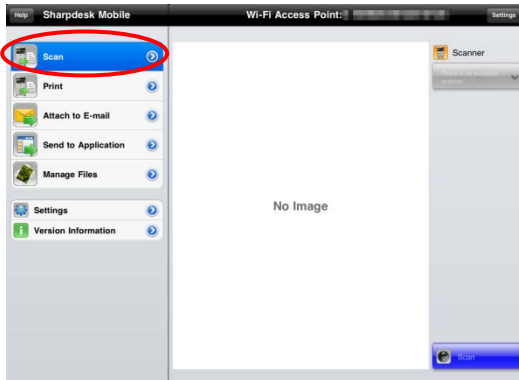
Tap "Save" to save the settings.

E-mail Account Settings	
Item	Description
Account Name	Enter user name to login to your e-mail account. This field is required when password is set.
Password	Enter your password to login to your e-mail account.
E-mail Server Settings: Contact your e-mail administrator for server information. Note: E-mail server must support IMAP4.	
Item	Description
Host Name	Enter e-mail server host name.
Port Number	Enter e-mail server port number. This is a required field. The default is 143 if "SSL" is set to "O(OFF)", or 993 if set to "I(ON)".
SSL	Select "I(ON)" if SSL is required to connect your mobile device with your e-mail server.
Acquisition number	
Item	Description
10/30/50/100	Select the number of acquired e-mail messages to appear in the Mail Display screen.
Filtering Settings	
Item	Description
All/Unread Only/Today's Mail/ Mail within 30 Days	This sets filtering of the messages displayed in the Mail Display screen.

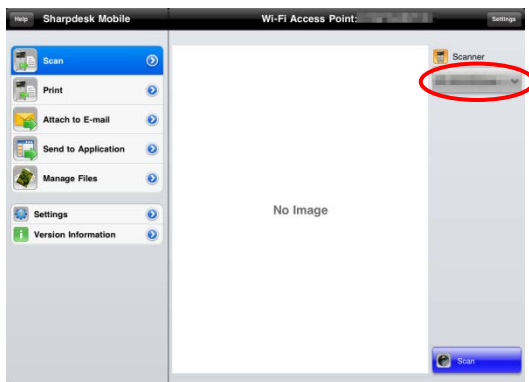
## 8 Scan


This function receives and stores scanned documents.

Tap “Scan” on the main screen.



Tap the button under “Scanner” to select the target scanner.



In the printers/scanners list (see step I in section 4.1), this icon  identifies the scanner assigned as the default scanner.

Operations may vary depending on scanner.

Please go to “Scan from Your Mobile Device” (Section 8.1) to learn how to execute a scan from your mobile device. If scan setting option is not available on your mobile device, please go to “Scan from the Scanner Operation Panel” (Section 8.2).

## 8.1 Scan from Your Mobile Device

Please complete the following steps to configure scan settings on your mobile device. Go to your local Sharp Web site for a list of supported scanners.

All operations except “setting a document on the scanner” can be completed within the application.

Note: Please confirm scanner home screen or user authentication screen is displayed on the scanner. When external authentication is enabled, user authentication screen will be displayed. Upon successful authentication, scanner home screen will be displayed.

- I. If you select the scanner that supports Scan from Your Mobile Device feature, setting menus and current scan settings will be displayed.



Note: When you disable this feature, you can initiate scan from scanner. Please go to “Scan from the Scanner Operation Panel” (Section 8.2) for further instructions.

The following settings are available:

Settings are automatically saved.

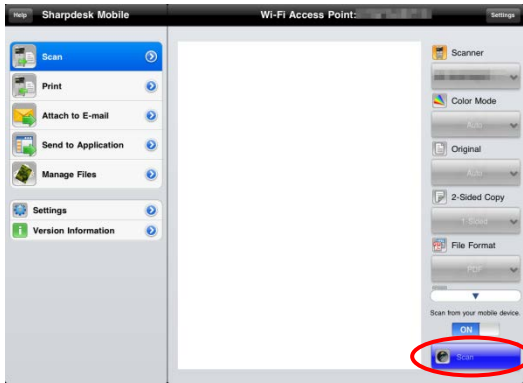


Item	Subitem	Description
Color Mode		Settings to scan color originals (Auto/Full Color/Grayscale/Mono2). The default value is “Auto”. Note: When “Long Size” is selected for “Original Size” under “Original”, only “Mono2” is available.

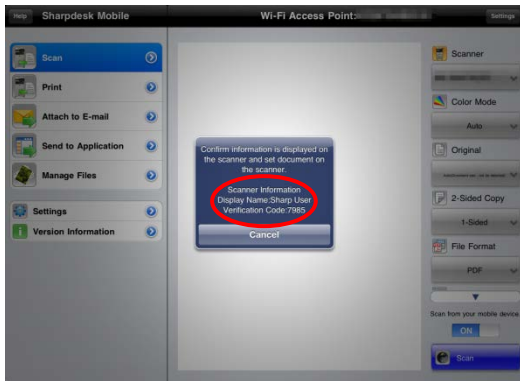
Item	Subitem	Description
Original	Original Size	While "Auto" is set as a default, non-standard original paper size cannot be detected by the scanner. You need to manually change the original size setting.
	Detected paper size (display only)	When you set a document on the target scanner, the original paper size will be automatically detected and displayed on your mobile device.
	Store Size	The size of the scanned image can be manually set. If this size is different than the detected paper size, the image will be automatically adjusted to fit the page. The default value is "Auto".  Note: You can only select "Auto" when any of the following original paper sizes is selected: Long Size/Japanese Postcard/Business Card/L Size/2L Size/Card/Custom Size.
	Custom Size Registration	Custom original paper sizes can be registered. Up to 5 custom sizes can be registered.
	Image Orientation	Select orientation of the image. You can select either "Rotation Off" or "Rotation 90 Degrees". The default value is "Rotation Off".
2-Sided Copy		Select 1-sided or 2-sided original.  1-Sided, 2-Sided(Book) or 2-Sided(Tablet) can be selected. The default value is "1-Sided".
File Format	Color	The menu has no name, just to select either "Color/Grayscale" or "B/W" (monochrome).  Format mode for scanning (Color/Grayscale, or B/W) can be selected.
	File Type	Scan file type can be selected.  When "Color/Grayscale" is selected in "Color", PDF, PDF/A, TIFF, and JPEG file types are available.  When "B/W" is selected in "Color", PDF, PDF/A, and TIFF file types are available.
	Compact PDF	The type of Compact PDF (None, Compact, or Compact Ultra Fine) can be selected when "Color/Grayscale" is selected in "Color", and "PDF" or "PDF/A" is selected in "File Type".  Note: Compact PDF is available only if the Scanner Expansion Kit is installed in the scanner.

Item	Subitem	Description
	Comp. Ratio	Compression Ratio (low, middle, high) can be selected when "Color/Grayscale" is selected in "Color". In addition, "Bk Letter Emphasis" can be selected if the scanner supports Bk letter emphasis PDF and "PDF" is set as the "File Type".
	Compression Mode	This can be selected when "B/W" is selected in "Color". None, MH(G3) or MMR(G4) can be selected for scan in Mono2 image.
	Specified Pages per File	This can be selected if you select "PDF", "PDF/A" or "TIFF" in "File Type". When selected, scanned document is split into files by specified number of pages. (E.g. when 2 pages is specified, the scanned document is grouped by 2 pages to create multiple files.)
	Encryption	When "PDF" file type is selected, PDF encryption is available. When checked, a "Password" should be assigned to open the encrypted PDF.
Resolution		<p>Scan resolution can be set. The following resolution options are available:</p> <p>100x100dpi, 150x150dpi, 200x200dpi, 300x300dpi, 400x400dpi, 600x600dpi</p> <p>Note: 150x150dpi can be selected only on the scanners that support the resolution.</p> <p>Note: Only 300x300dpi is available when you select "Compact" or "Compact Ultra Fine" under "Compact PDF".</p>
Other Settings	Exposure	Exposure (Auto, Characters, Text/Prtd.Photo, Printed Photo, Text/Photo, Photo, Map) for scanning can be selected.
	Exposure Level	Exposure level (1 to 5) for scanning can be selected. This can be set if "Auto" is selected for "Exposure".
	Blank Page Skip	If set to other than "Off", if the original contains blank pages or back shadow, the scanner will automatically detect them and skip them when scanning. Setting options are "Off", "Skip Blank Page", and "Skip Blank and Back Shadow".

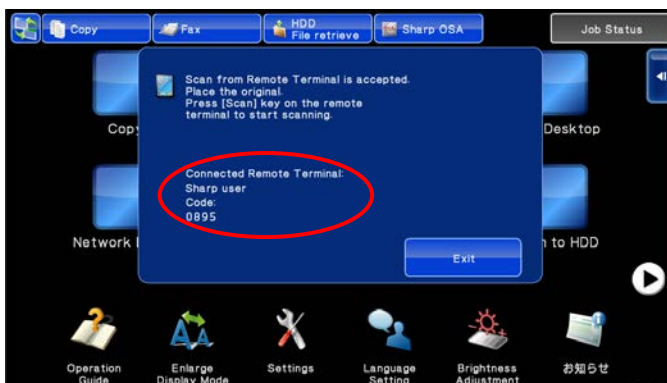
II. When you complete all settings, tap “Scan”.



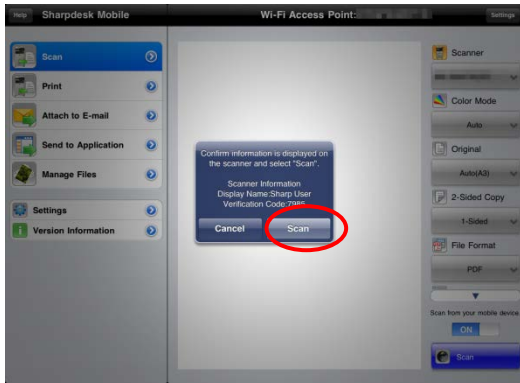
III. After tapping “Scan” button, the information of the target scanner (“Display Name” and “Verification Code”) will be displayed on the scanner operation panel and move to a waiting (scanning ready) stage.



IV. Confirm if the selected scanner displays information of your mobile device, then set a document on the scanner.



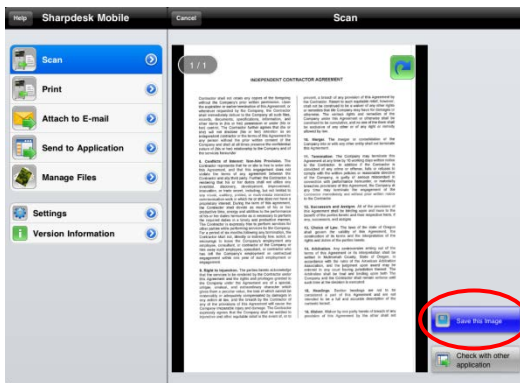
V. Select “Scan” on a pop-up dialog to continue.



VI. Scanned data is sent to this application.

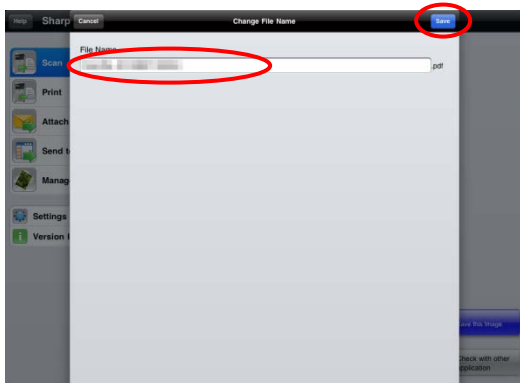
If a single data is received, the preview of the data is displayed. For preview operation, go to Section 12.3.

Tap “Save this Image”.



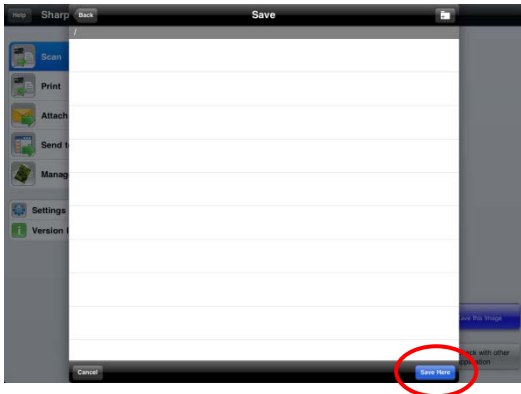
VII. Scanned data, already named at the scanner, can be renamed at this stage.

If desired, enter a new file name and then tap “Save”.

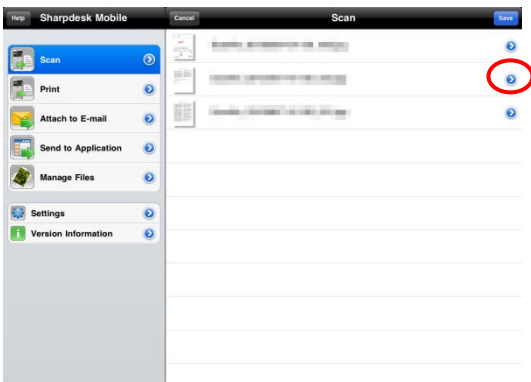




VIII. Select the destination folder and tap “Save Here” to store the data as a file into the folder in your mobile device.



If multiple scanned data is received, a list of received data is displayed. Tap “Save” and then complete steps VII and VIII to store files to selected folder on your mobile device. (A sequential number is added to the end of the file name entered at step VII.)



Note: You may tap any data in the list to preview. However, this data can only be stored together with the rest of the received data.

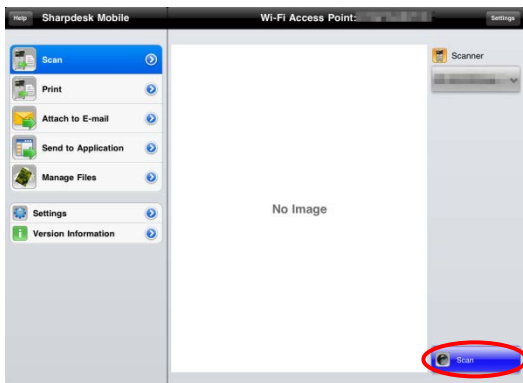
## 8.2 Scan from the Scanner Operation Panel

If "Scan from Your Mobile Device" is not available on the scanner, use following steps to scan from scanner operation panel.

Resolution, file format and other scan settings must be configured on the MFP operation panel when scanning.

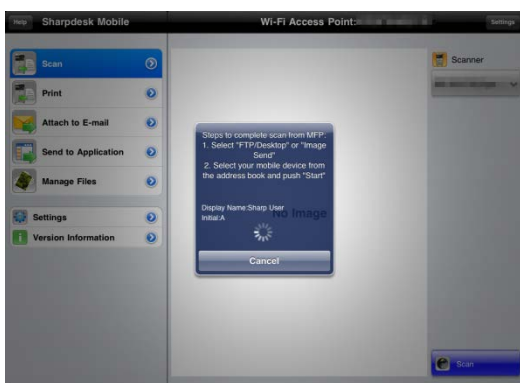
Note: Please be sure address book is not displayed on the scanner operation panel. If address book is displayed, this operation will not work.

### I. Tap "Scan".



### II. Tap "OK" when the dialog "Steps to complete scan from MFP:" is displayed. Set a document on the scanner and follow the steps on the operation panel of the scanner to complete scan. For details, see the operation guide of the scanner.

Note: If "Display Name" and "Initial" is displayed in the dialog, make sure the same values are displayed in the operation panel of the scanner.

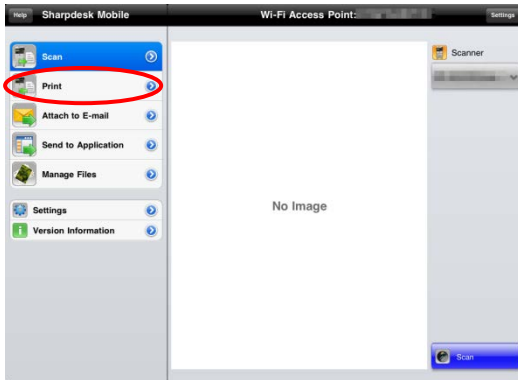


### III. Begin at step VI in section 8.1 to complete the process.

## 9 Print

The documents stored in this application, photo images, web pages and e-mails can be printed.

Tap "Print" on the main screen.

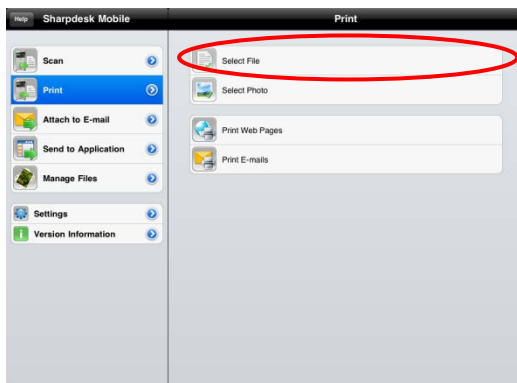


### 9.1 Print a Stored Document in this Application

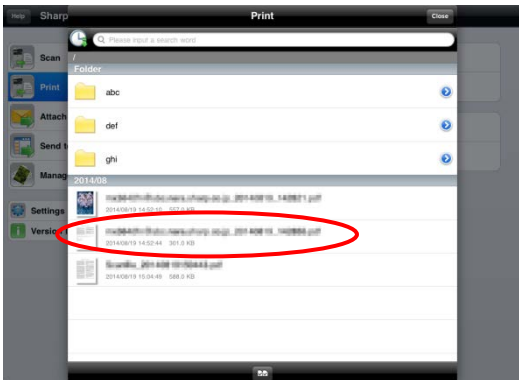
The documents stored in this application can be printed.


Supported file formats are JPEG, TIFF, PNG and PDF (including compact PDF and encrypted PDF).

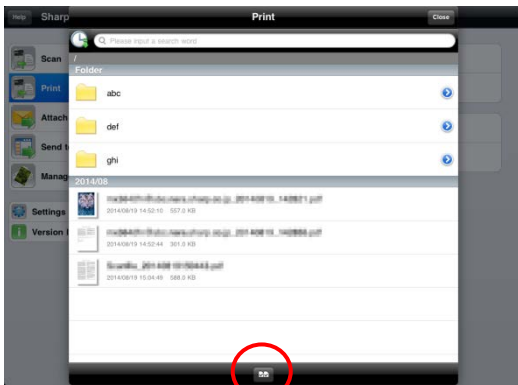
I. Tap "Select File".



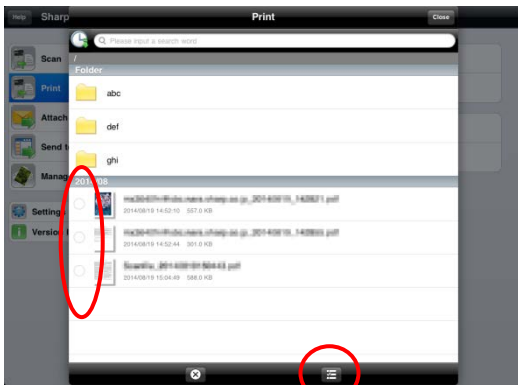
II. Files and folders stored in this application are listed. See section 12.1 to modify files/folders list or section 12.2 to search files/folders. Select a file to display a preview with print settings.



● To print multiple files together, tap .

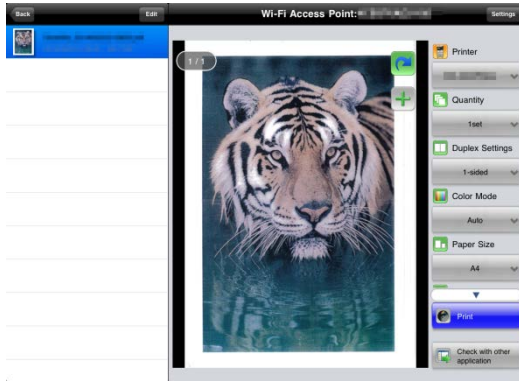



Select the files to be printed, and then tap .



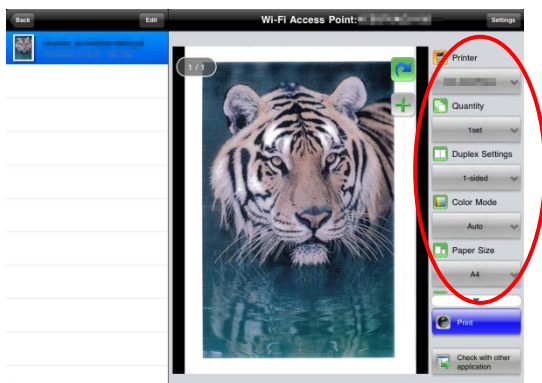
Note: Multiple files will print in the order they are selected. If an error occurs while multiple files are printing (job transmission), only the files sent before the error occurred will be printed.


III. For a preview operation, go to section 12.3.



- You can tap  to select multiple files.  
 Note: Multiple files will print in the order they are selected. If an error occurs while multiple files are printing (job transmission), only the files sent before the error occurred will be printed.

IV. The following print settings are available:

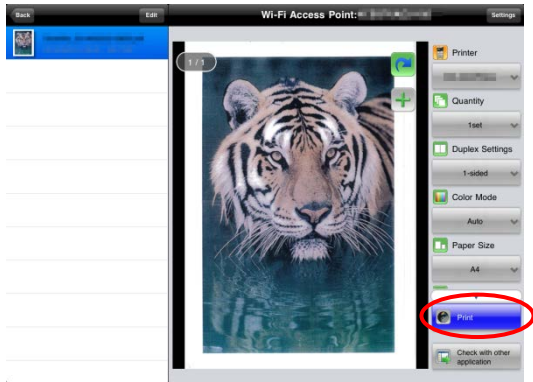


Items	Description
Printer	Select a printer to print and configure print settings. In step I of section 4.1, this icon  identifies the printer assigned as the default printer.
Quantity	Tap to configure print quantity if necessary. Quantity can be configured from 1 set to 99 sets.
Color Mode	Tap to configure color mode. Either Auto, Color or Grayscale can be selected.
Paper Size	Tap to configure paper size to be printed. The following sizes can be configured: A3 Wide, A3, A4, A5, B4, B5, Ledger, Letter, Legal, Executive, Invoice, Foolscap, 8K, 16K, DL, C5, COM10, Monarch, Japanese Postcard, 240 x 332, Choukei 3, Japanese You #2, Japanese You #4  Note: If "Japanese Postcard" is selected, the printer will select "Japanese Postcard" as the paper size when printing.

Items	Description
	<p>If "DL", "C5", "COM10", "Monarch", "240 x 332", " Choukei 3", " Japanese You #2" or " Japanese You #4" is selected, the printer will select "Envelope". Set the required paper into the printer. If any other paper is set, it may not print properly, or printer blockages may occur.</p>
Duplex Settings	<p>Tap to configure 1-sided print or 2-sided print if necessary. Regarding 2-sided print, it can be configured along with binding direction of Tablet or Book.</p>
N-Up	<p>Tap to reduce image size and fit multiple pages on a single page.</p> <p>1-Up (1 page per a single sheet), 2-Up (2 pages per a single sheet) or 4-Up (4 pages per a single sheet) can be selected.</p> <p>Order: For 2-Up printing select "Left to Right" or "Right to Left". For 4-Up printing select "Right, and Down", "Down, and Right", "Left, and Down" or "Down, and Left".</p> <p>Note: You cannot specify N-Up for files of the following formats: PDFs other than those scanned by Sharp scanners (including Scan Accessory Kit), JPEG, PNG and TIFF.</p>
Print Area	<p>Configure print range to print.</p> <p>All Pages: Print all pages.</p> <p>Print Pages: Specify the number of the first and last pages that you want to print.</p> <p>Direct Input: Enter page numbers and/or page ranges. For page ranges, use a hyphen. You can separate each page or range with a comma.</p> <p>Note: You cannot specify Print Area for files of the following formats: PDFs other than those scanned by Sharp scanners (including Scan Accessory Kit), JPEG, PNG and TIFF.</p>
Retention	<p>Tap "Retention" to hold a print job as a file on the printer's hard disk, allowing the job to be printed from the printer operation panel when needed. Set "Hold Only" to "ON" to enable this feature. Main Folder is specified as the location of the held file.</p> <p>If "Specify Password" is set to "ON", the password (a number from 5 to 8 digits) allows a confidential job to be stored on the printing device and the file cannot be printed unless the correct password is entered at the printing device's operation panel.</p> <p>The default value is specified using the "Retention" setting in the Application Settings (see Chapter 6). Here the "Retention" setting can be specified separately for each print job.</p> <p>Note: You cannot specify retention for Encrypted PDF. It can be securely printed by</p>

Items	Description
	completing the operations explained in section 9.1.1.

V. Tap “Print”.



The dialog “Do you want to Print?” is displayed. Tap “OK” to print the image.

Note: If selected printer does not have appropriate options to print the file, an error message is displayed. Please select another printer.

### 9.1.1 Print an Encrypted PDF File

To print encrypted PDF files, complete the following steps:

Note: The following operation is an example using the MX-2610N/MX-3110N/MX-3610N. Printing steps may vary per printer model.

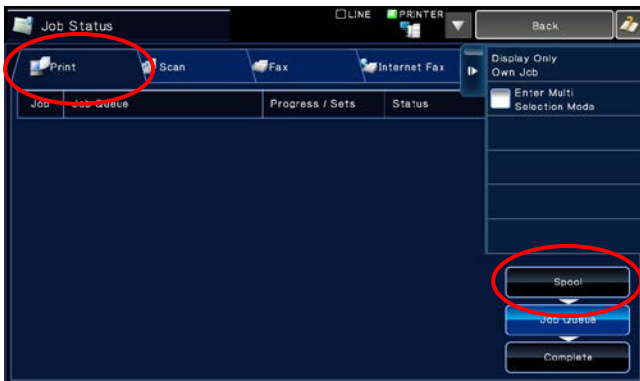
I. The dialog “The encrypted PDF data is in the spool queue.” is displayed. Tap “OK”.



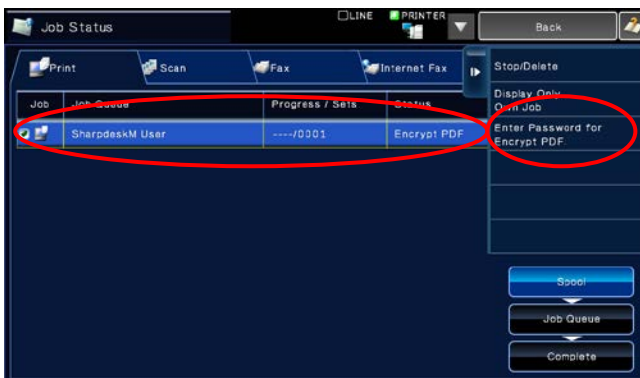
II. Tap “Job Status”.



III. Select “Print” tab, and then tap “Spool”.

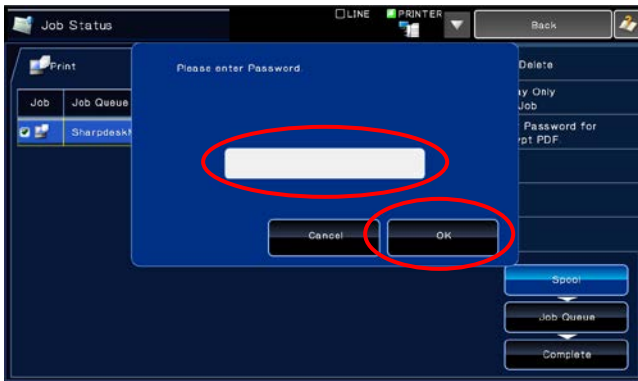


IV. The print jobs sent from this application are listed. Select the job, and then tap “Enter Password for Encrypted PDF” in Action Panel.





V. The dialog “Please enter Password.” is displayed. Tap “OK” to start printing.



## 9.2 Print a Photo Image

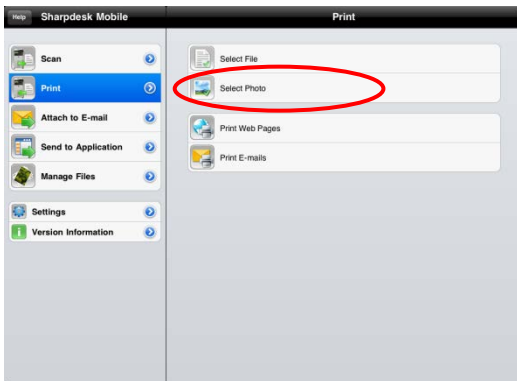
The photos stored in “Photo” or “Photo Album” can be printed.

Note: JPEG, TIFF and PNG can be printed.

Note: If you use this application on iOS 4.3 through 5, “Location Services” shall be granted to use. Tap [Settings]-[Location Services], and then set “Location Services” to “ON”.

If you use this application on iOS 6 through 7, access to “Photos” from this application shall be granted. Tap [Settings]-[Privacy]-[Photos] to display the application list, and then find “Sharpdesk Mobile” and set to “ON”.

I. Tap "Select Photo".



- II. Photo images stored on your mobile device are listed. Tap one or more images to select them for printing, and then tap "Done".



Note: Preview is not displayed if free memory on your mobile device is not sufficient.

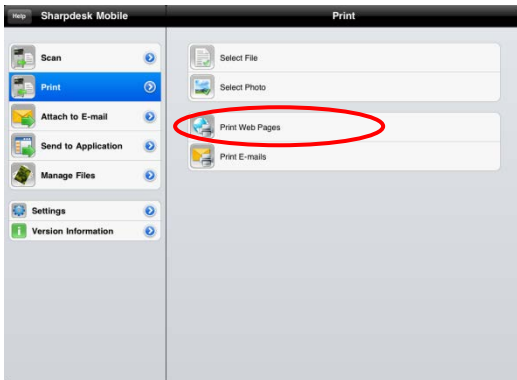
- III. Go to step IV in section 9.1 for the subsequent steps.

### 9.3 Print Web Pages

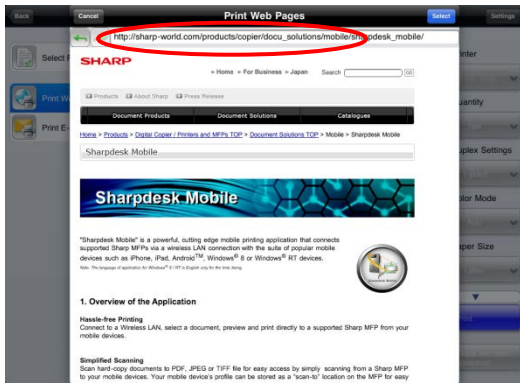
Web pages browsed within this application can be printed.

Note: Your mobile device requires an internet connection to browse web pages.

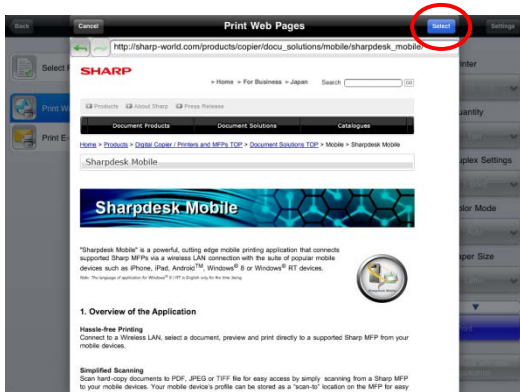
- I. Tap "Print Web Pages".



II. The web browser will be opened in the application. Enter URL of the web page to view.




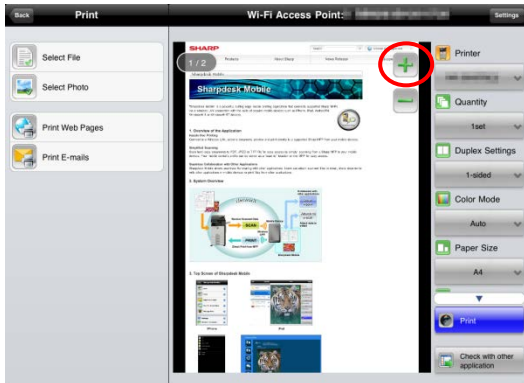
III. Tap "Select".




IV. Print setting menu with a print preview of the web page is displayed.



- You can print multiple web pages. If you wish to add another web page to print, tap . The screen goes back to step II.



Note: Additional web pages are printed after web pages which were already selected. For example, if an already-selected web page has an odd number of pages and double-sided printing is selected, the additional web page will be printed starting from the reverse side of the final page of the already-selected web page.

- To delete an added web page, preview the page that you want to delete and then tap  .
- If you do not wish to add another web page, go to step IV in section 9.1 to complete the operation.

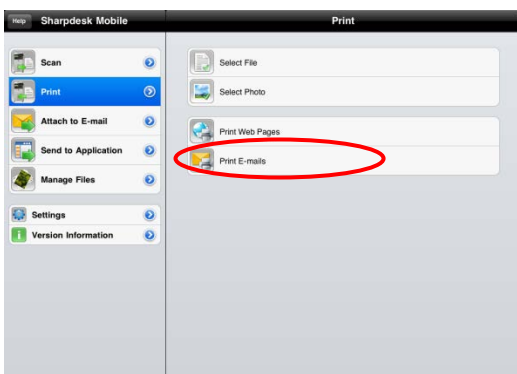
## 9.4 Print E-mails

E-mails received in this application can be printed.

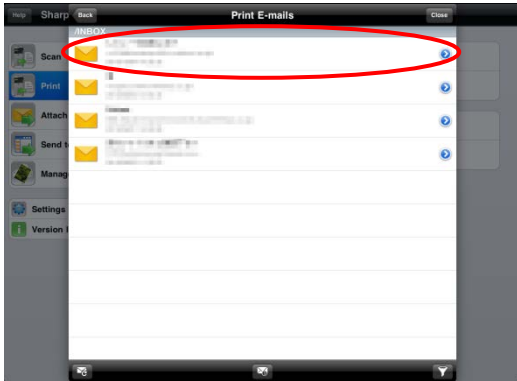
Note: Your mobile device requires an internet connection to receive e-mails.


Note: You cannot send e-mails from this application.

- I. Tap "Print E-mails".




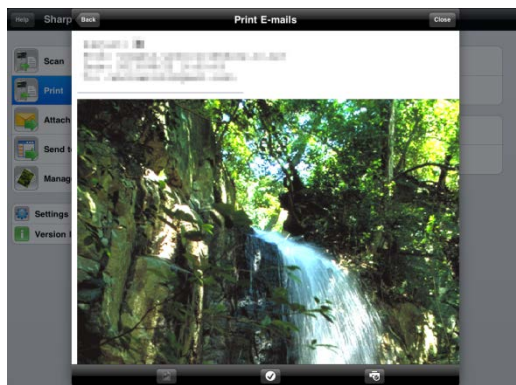
II. E-mails received from the specified e-mail server are listed. Select an e-mail to open and view.



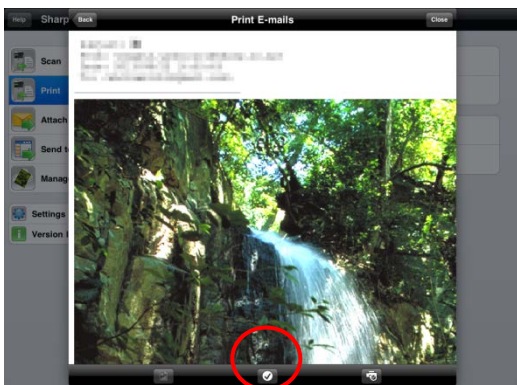
- Tap  to set the number of acquired e-mail messages to appear in the Mail Display screen and the filtering for those messages.

III. The content of the selected e-mail is displayed.

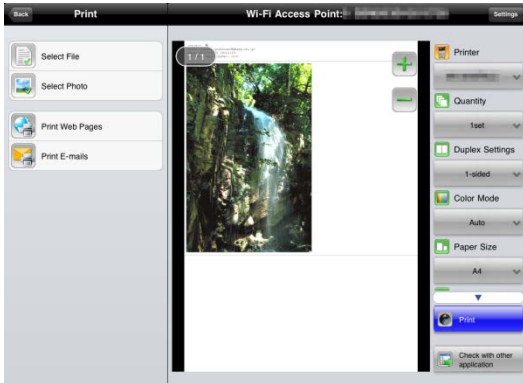
Images attached to the selected e-mail are not displayed by default. Tap  to display the attached images.




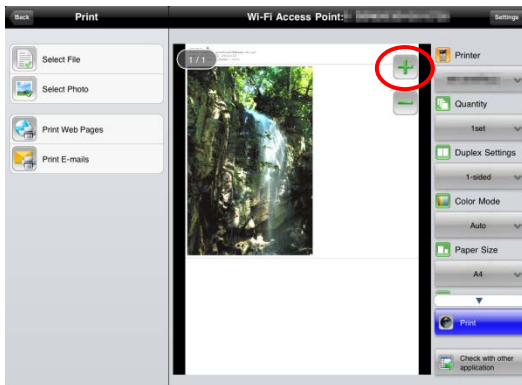
IV. Tap  .



## V. Print setting menu with a print preview of the selected e-mail is displayed.




- You can print multiple e-mails. If you wish to add another e-mail to print, tap . The screen goes back to step II.

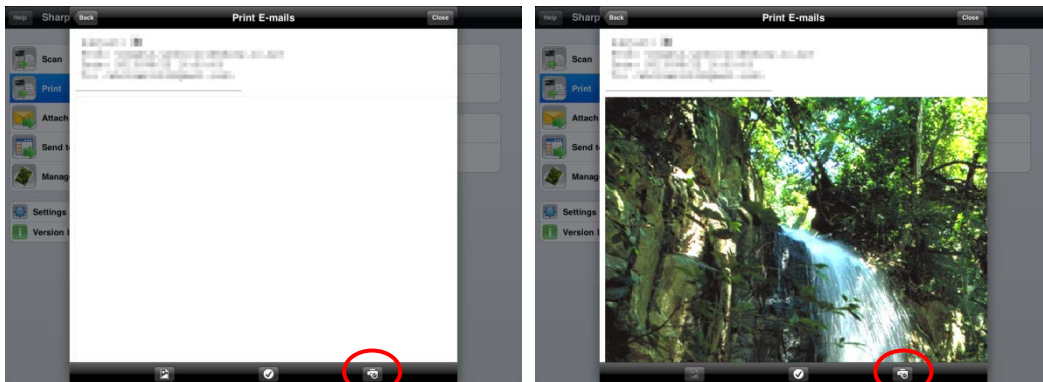


Note: Additional e-mails are printed after e-mails which were already selected. For example, if an already-selected e-mail has an odd number of pages and double-sided printing is selected, the additional e-mail will be printed starting from the reverse side of the final page of the already-selected e-mail.

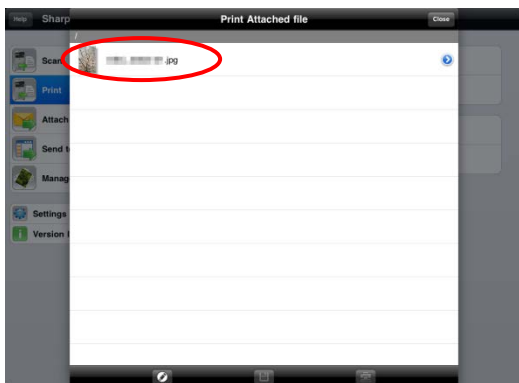
- If you do not wish to add another e-mail, go to step IV in section 9.1 to complete the operation.



### 9.4.1 Printing file attachments

- I. In the Mail Display screen at step III in section 9.4, tap .



- II. In the "Print Attached File" screen, select the files to be printed.



- To select multiple files in the list, follow the procedure below.
  - 1) Tap  at bottom-left.
  - 2) Check boxes are displayed at the left side of the list. Check the boxes next to the files to be selected, and then tap  at bottom-right.

Note: Multiple files will print in the order they are selected. If an error occurs while multiple files are printing (job transmission), only the files sent before the error occurred will be printed."

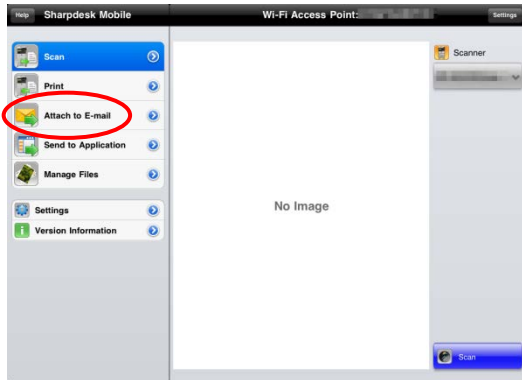
- III. The File Preview and Print Setting menu will appear.  
The subsequent steps are the same as those from step III in section 9.1."

## 10 Attach to E-mail

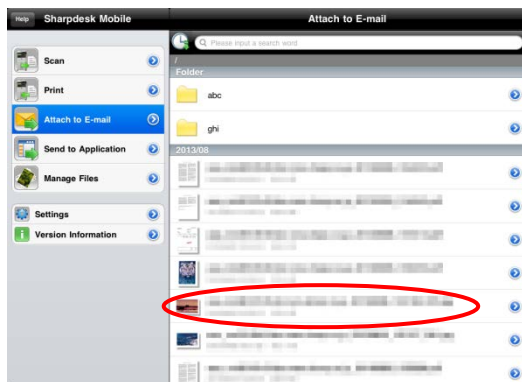
The document stored in this application can be attached to E-mail.

Note: E-mail application has to be configured beforehand.

- I. Tap "Attach to E-mail" on the main screen.



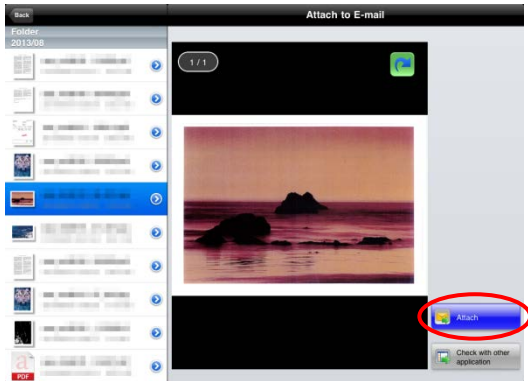
- II. Files and folders stored in this application are listed. Tap any file to attach to e-mail. Go to section 12.1 to modify files/folders list or 12.2 to search files/folders.



Preview of the selected file is displayed. For preview operation, go to section 12.3.



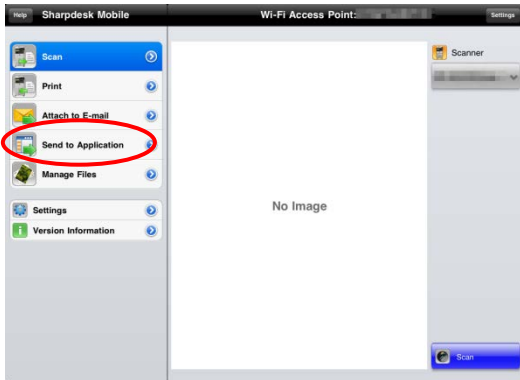
III. Tap "Attach" in the menu. E-mail application is invoked and the e-mail that the file is attached is displayed. Send the e-mail after composing the mail.



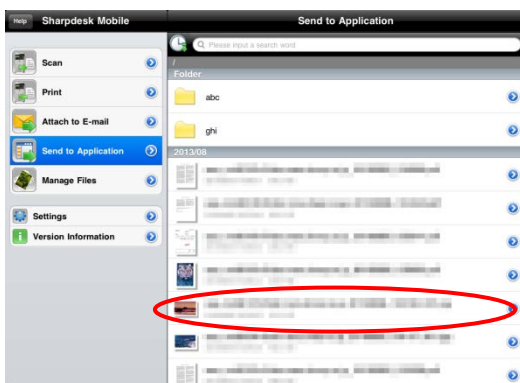
# 11 Send to Application

The documents stored in this application can be sent to other application.

- I. Tap "Send to Application" on the main screen.

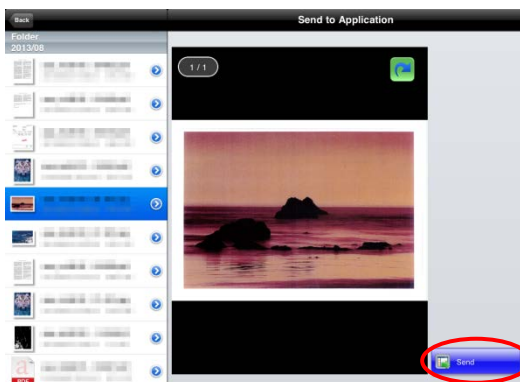


- II. Files and folders stored in this application are listed. Tap any file to preview. Go to section 12.1 to modify files/folders list or 12.2 to search files/folders.



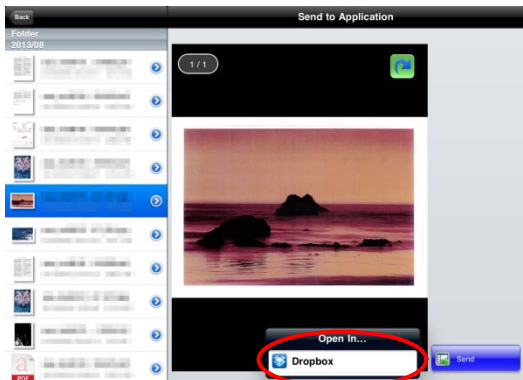
Preview of the selected file is displayed. For preview operation, go to section 12.3.

- III. Tap "Send" in the menu.



IV. Available applications are listed.

To send the file to another application, select the application from the list.

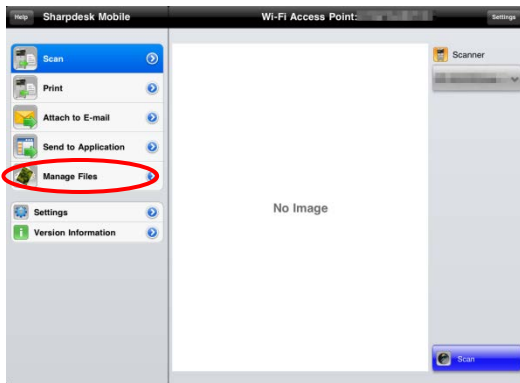


Note: If you use this application on iOS 4.3 through 5, up to 9 applications are listed. If target application is not listed, please uninstall unnecessary applications.

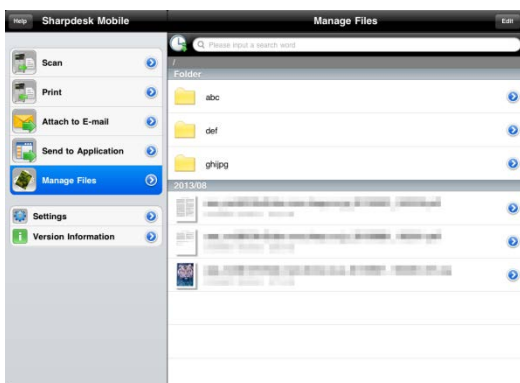
## 12 Manage Files

Files or folders stored in the application can be managed. Available actions include listing files and folders stored in the application, searching for files and folders, previewing files, changing a file/folder name, move, delete, or create a folder.

Tap “Manage Files” on the main screen.

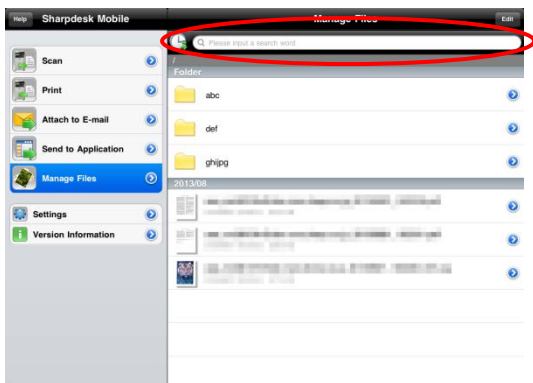


Files and folders stored in this application are listed.



## 12.1 Reordering Files/Folders

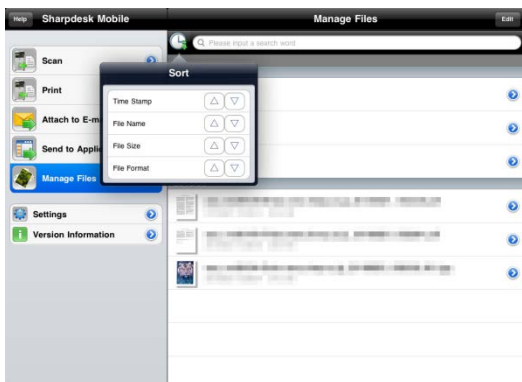
Sort button and search bar are displayed in the file/folder list.



One of the following icons expressing current sort condition and order is indicated in the Sort button.

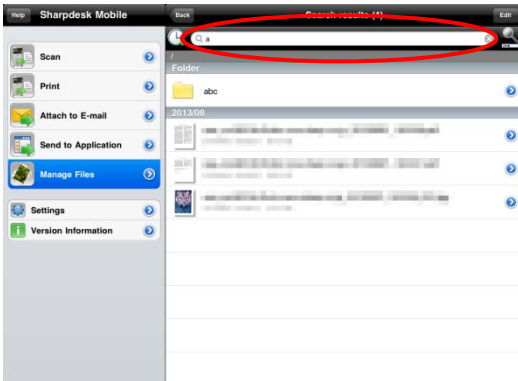
	Ascending order of time stamp		Ascending order of file size
	Descending order of time stamp		Descending order of file size
	Ascending order of file name		Ascending order of file format
	Descending order of file name		Descending order of file format

Tap the sort button to sort. Sort condition and order can be changed. Sort conditions include time stamp, file name, file size and file format. Tap for ascending order and for descending order.

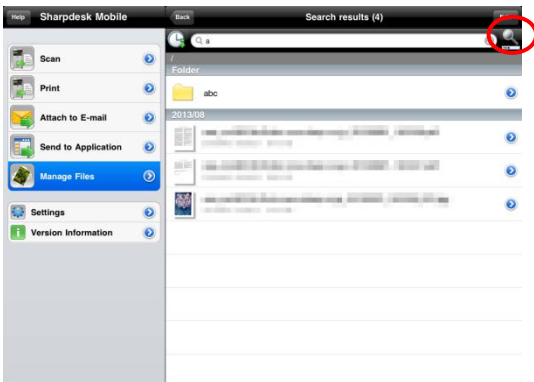


## 12.2 Search Files/Folders

Sort button and search bar are displayed in the files/folders list. Enter the entire file/folder name, or a portion of the file/folder name that you would like to find. A list of files containing the searched-for characters will be displayed.



Further search from the search result can be conducted with tapping  to the right of the search bar.



Filter the search items further.

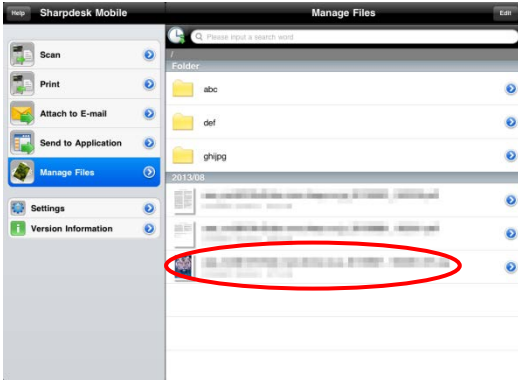


Item	Description
Include subfolders	Include subfolders in search.
Folder	Include folders in search.
PDF	Include PDF files in search.
TIFF	Include TIFF files in search.
Image File(JPEG, PNG)	Include JPEG and PNG files in search.

You can arrange order of the search result. See section 12.1.

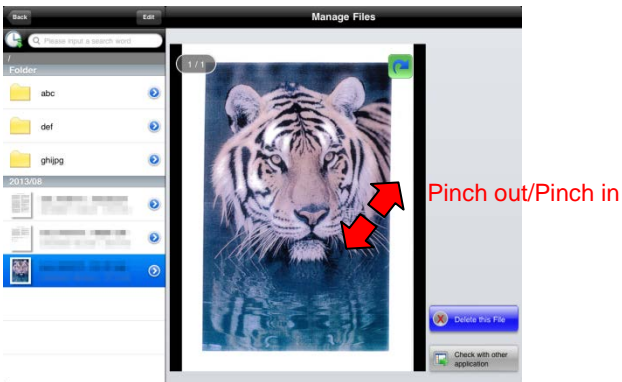
### 12.3 Preview a File

You can preview a file in the files/folders list.

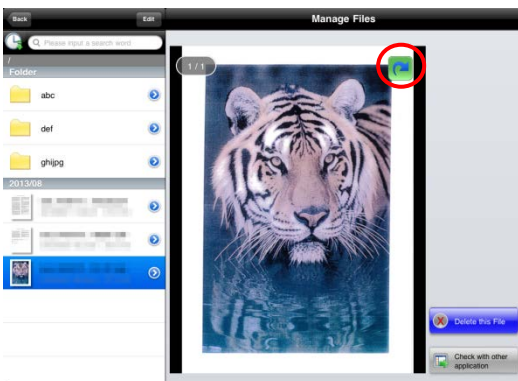


Note: Preview is not displayed if free memory in your mobile device is not sufficient.

Use two fingers to zoom in/out the preview image. (Pinch out/Pinch in)

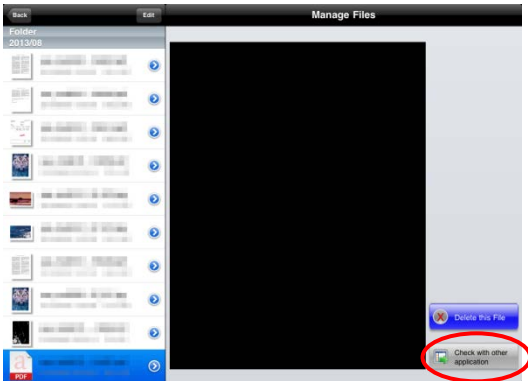


Tap  to rotate the preview 90 degrees clockwise.



Note: Original size and/or orientation of the image are kept even if another operation is performed after the preview was rotated and/or zoomed.

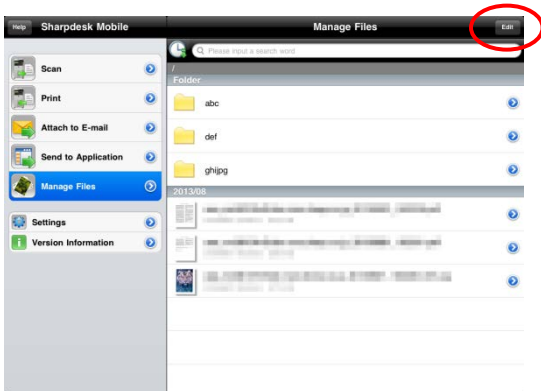
Some file formats (see chapter 2) cannot be previewed or rotated. Tap “Check with other application” to select an appropriate application to preview the file.



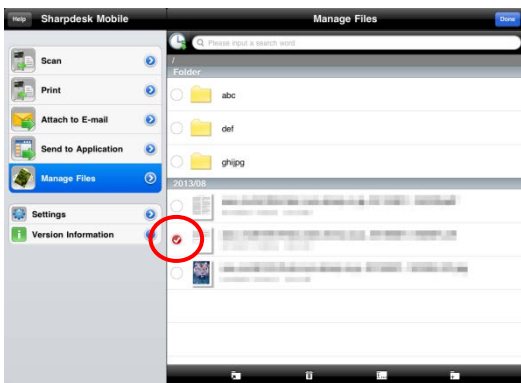
## 12.4 Rename a File/Folder

Note: You can rename only 1 file/folder at one operation. You cannot rename multiple files/folders at once.


I. Tap “Edit”.

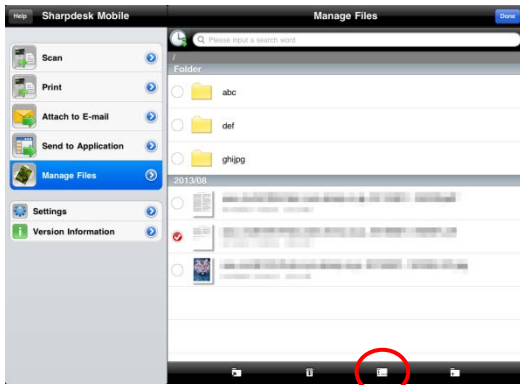


II. Check boxes appear in the left of the list and the menu bar appears in the bottom. Tap the check box of the file/folder you wish to rename.

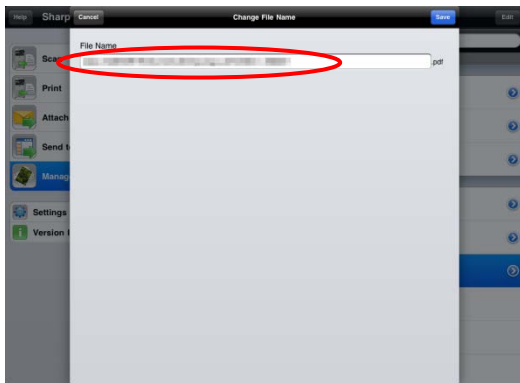




III. Tap  on the menu bar.



IV. “Change File(Folder) Name” dialog is displayed. Enter a new name and tap “Save”.



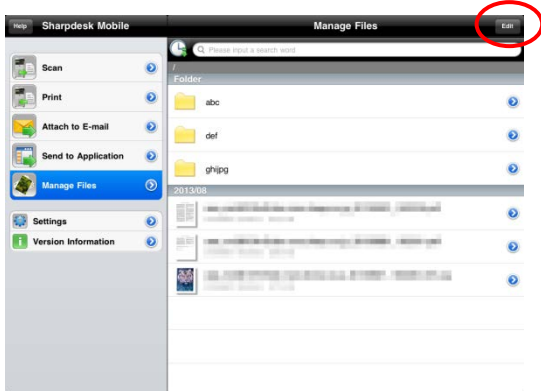
Note: The extension name of the file cannot be changed.

V. Tap “Save” to rename.

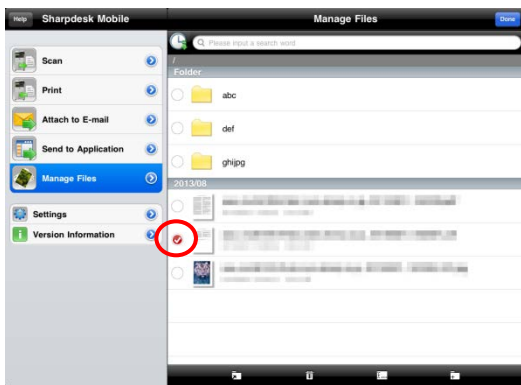



## 12.5 Move Files/Folders

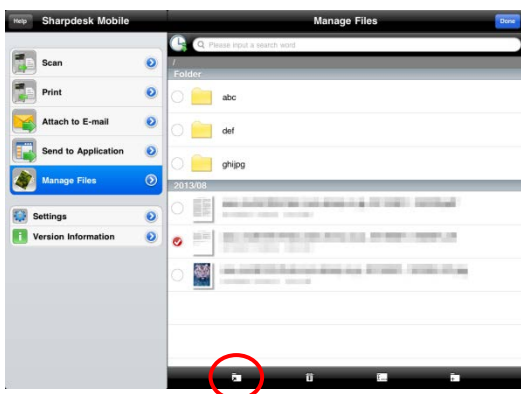
I. Tap "Edit".



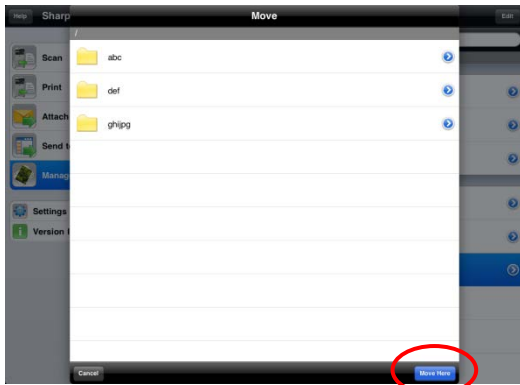
II. Check boxes appear in the left of the list and the menu bar appears in the bottom. Tap the check box of the file/folder you wish to move.




III. Tap  on the menu bar.

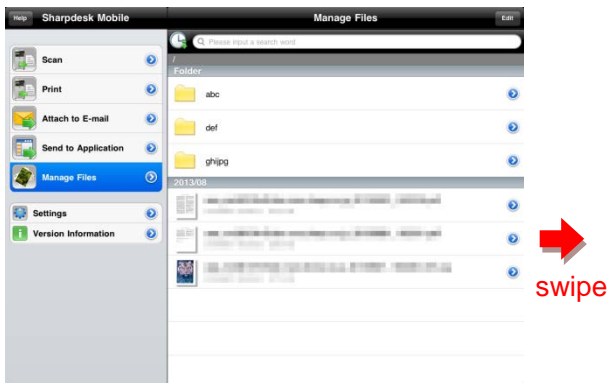


IV. The “Move” dialog is displayed. Select a target folder and tap “Move Here.”

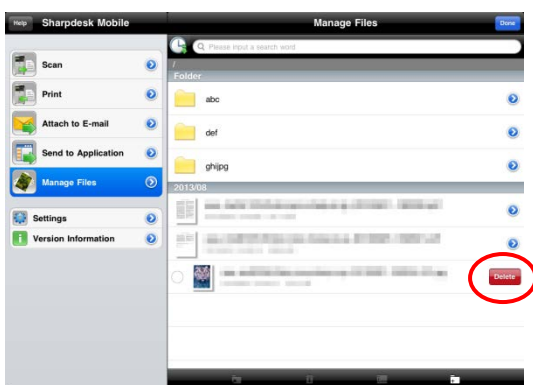


## 12.6 Delete Files/Folders

I. Swipe  to the right of the files/folders that you wish to delete.

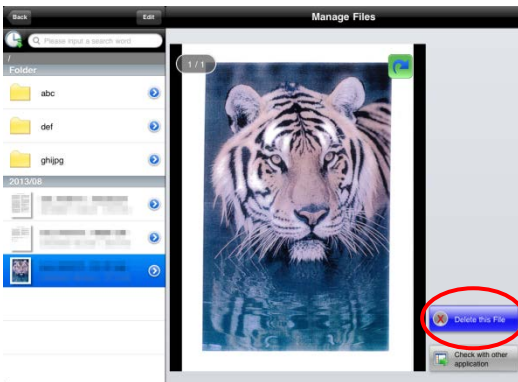


II. The “Delete” button is displayed. Tap the button to delete.



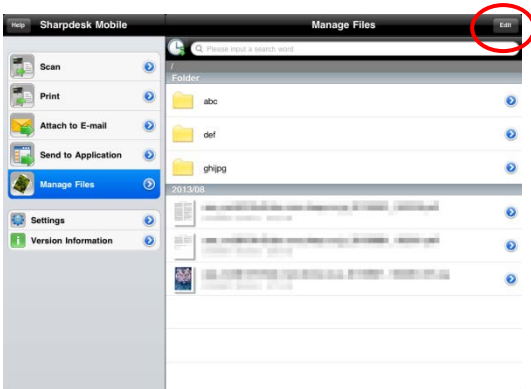
You have an option to preview a file before deleting it:


Tap “Delete this File” in the preview screen (see section 12.3).

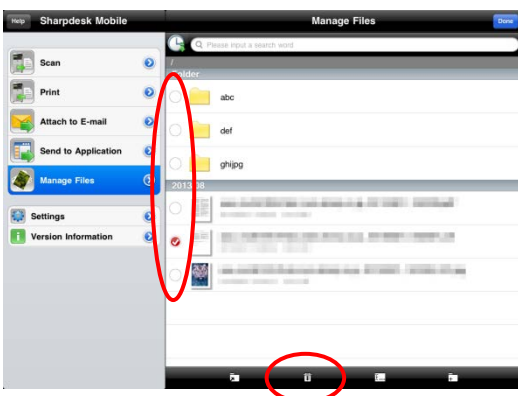


Note: Folders cannot be deleted in this step.

If you wish to delete multiple files/folders, tap “Edit” in files/folders list.

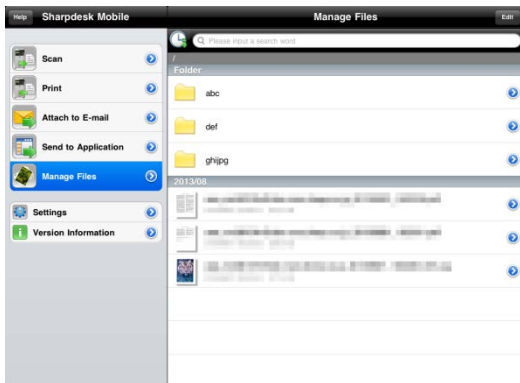



Check boxes appear in the left side of the list, so tap any files/folders and tap  on the menu bar.

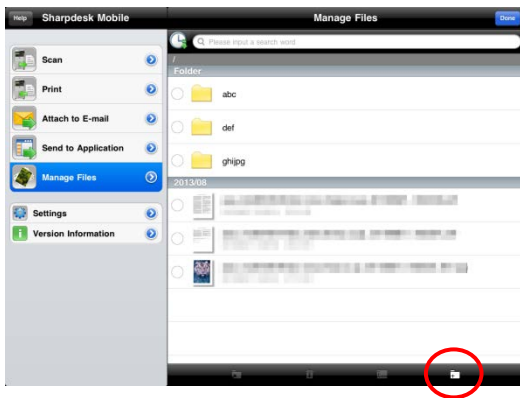


## 12.7 Create a Folder

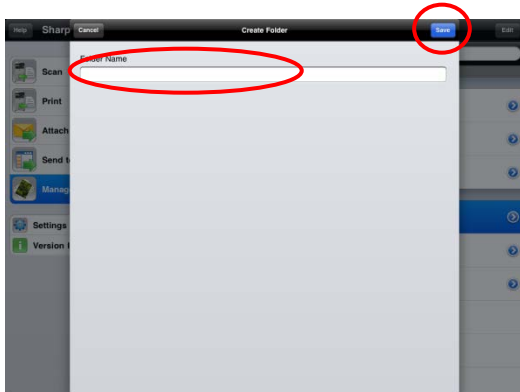
I. Go to the folder under which you wish to create a new folder.



II. Tap “Edit” to display the menu bar and then tap .



III. “Create Folder” dialog is displayed. Enter a new folder name, then tap “Save” to create the folder.

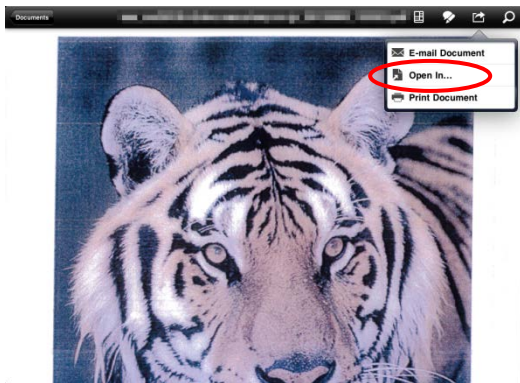


## 13 Print from External Application

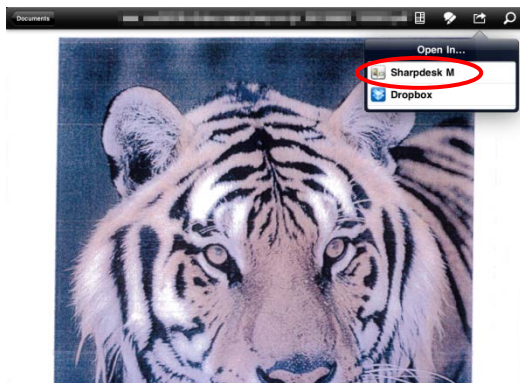
Data sent from other applications in your mobile device can be printed from this application.

I. Open the file that you wish to print (JPEG, TIFF, PNG or PDF) in other application.

II. Tap  to display the menu and then tap “Open In...”.



III. “Sharpdesk M” is listed as one of the applications that can receive this file. Then tap “Sharpdesk M”.



Note: If you use this application on iOS 4.3 through 5, up to 9 applications are listed. If “Sharpdesk M” is not listed, please uninstall unnecessary applications.

Note: To print a photo, see the steps in section 9.2.

IV. See step IV or later in section 9.1 for the subsequent steps.

App Store is a service mark of Apple Inc.

Apple, the Apple logo, iPad and Bonjour are trademarks of Apple Inc., registered in the U.S. and other countries.

Sharpdesk is a trademark or registered trademark of Sharp Corporation in the U.S. and other countries.

All other company names, products, services and logos used herein are trademarks or registered trademarks of their respective owners.

This software includes the following modules.

SNMP++ / MailCore / LibEtPan / iOS Ports SDK / Cyrus SASL / OpenSSL /  
ELCImagePickerController / MiniZip

PA0212EN-003