

SHARP

Be Original.

MX-B456W
MX-B356W

Digital Multifunction System



Pivot to a Smarter Workflow



simply better **business**



Less bulk, less lag, less hassle —



Simply Better **Experience**

Compact, streamlined, and packed with document functionality, this MFP fits seamlessly into any business setting.



for Simply Better **Business**

Executive rooms



Process

With features normally found on advanced A3 machines, this MFP puts the power of productivity at your fingertips.

Enterprises



Admin

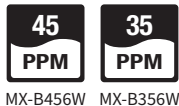
Setting up a secure environment is easy with this MFP, which runs on the same system used by Sharp's A3 machines.

COPY/PRINT

Super-Efficient Output and Short Warm-Up Time

This MFP delivers a fast output of 45/35 ppm*1. The first copy comes out in just 3.7/5.3 seconds, saving you valuable time when performing multiple short-run jobs. The MFP's warm-up time of 20 seconds*2 brings added efficiency and reduces overall energy consumption.

*1: A4, short-edge feeding; 47/37 ppm for 8 1/2" x 11" size.
 *2: When starting the MFP via the power button.
 30 sec. when starting via the main power switch.



Office Direct Printing*

Print common Microsoft® Office files without using a PC. With this MFP, you can print a Word, Excel®, or PowerPoint® file directly from a mobile device, cloud service, USB drive, or file server.

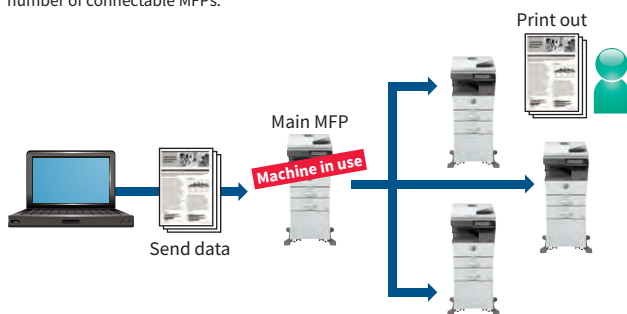
* The actual printout may look different from what is displayed on the computer screen. This function is enabled via Qualcomm® DirectOffice™ technology.



Print Release*

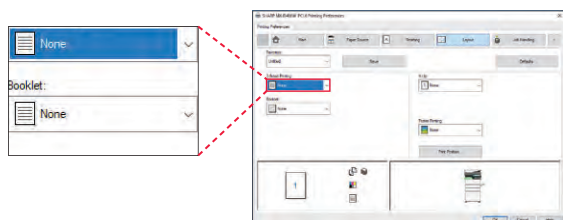
The Print Release function lets you send documents to the main MFP, which acts as a server and stores them for printing out from any other compatible MFP on the network. This function comes in handy when the main MFP is in use or under maintenance, letting you finish your job with minimal waiting.

* Contact a Sharp customer representative for details on the recommended maximum number of connectable MFPs.



Printer Driver with Easy Setup

The printer driver setup window features a simple design that includes larger buttons and drop-down menus, making it easier than ever to use printer functions.



Space-Efficient Inner Finisher

With the help of this finisher option, the MFP can handle document sorting and stapling jobs with ease.



Accommodates Various Paper Sizes

The main unit paper tray and multi bypass tray accommodate a wide variety of paper sizes, including A6. The multi bypass tray and optional paper feed unit handle legal size paper and paper up to 220 g/m² thick.

Large Paper Capacity

This MFP comes standard with a 500-sheet tray and 50-sheet multi bypass tray. An optional 600-sheet paper feed unit is available for a total paper capacity of 2,350 sheets.



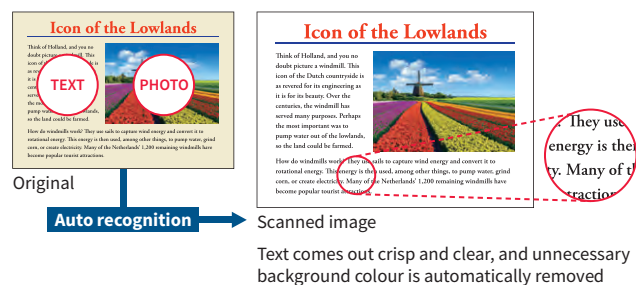
PCL 6 and True Adobe® PostScript® 3™

For enhanced font compatibility and improved graphics handling, this MFP supports both PCL 6 and Adobe PostScript 3.

Easy, High-Quality Scanning

Through an advanced three-step process, **Auto Colour Mode** provides faithful and fully automated scanning in both colour and B/W—all with a simple press of the Start button. Here's how it works: **Auto Colour Selection** automatically determines whether a page is colour or B/W. **Auto Original Type Selection** then analyses page contents to distinguish between different components (such as photos and text) and selects the appropriate mode. Finally, **Background Suppression** automatically removes unnecessary background colour.

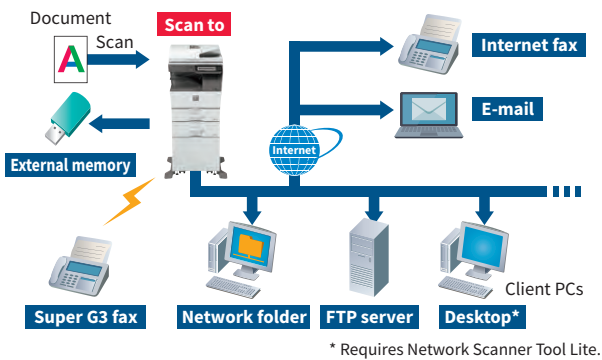
Auto Colour Mode



SCAN/FAX

Multiple Scan Destinations

Scanned documents can be distributed in a number of ways. A compact PDF function ensures that PDF files are sent and received smoothly. When you're scanning large-volume documents, the MFP saves the data on its hard disk and generates a URL for accessing that data. You can then e-mail recipients this URL rather than the full document, thereby reducing the load on the mail server.



Convert Documents via OCR

OCR capability on this MFP lets you convert a scanned document into a searchable PDF file or into an editable Office Open XML (docx, xlsx, pptx) file. This means you can do speedy text searches, even with large-volume documents, and you can easily copy and paste text data into other applications.

Business Card Management

Creating and managing a database of business cards is easy with this MFP. The MFP features a dedicated feeder for scanning batches of up to 25 business cards. It reads contact details on each card via OCR* and then exports those details to a third-party contact management system of your choice.

* Scans one side only, even when using document feeder.



Card Shot (Multi) Function

Scan up to four ID or credit cards at once, turn them over, and scan the reverse sides. For each card, a separate file is created that includes the front and reverse sides.



Quick Scanning

On the MX-B456W, a 100-sheet DSPF (duplex single pass feeder) scans at 110 opm*¹ (two-sided) or 70 opm*¹ (one-sided). On the MX-B356W, a 50-sheet RSPF (reversing single pass feeder) scans at 40 opm*¹ (one-sided). Both the DSPF and RSPF*² include a business card feeder that feeds in batches of up to 25 cards. Such speedy functionality means that even large jobs can be finished quickly and efficiently.

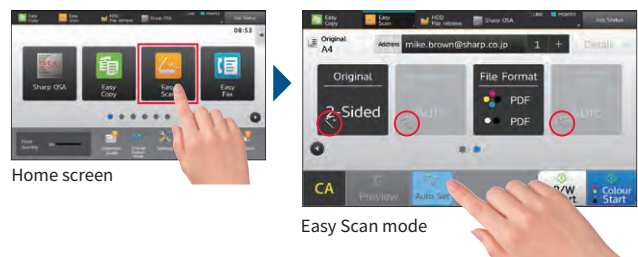
*1: Originals per minute; when feeding A4 (8 1/2" x 11") sheets

*2: RSPF scans only one side of business cards

Automated Scanner Settings*¹

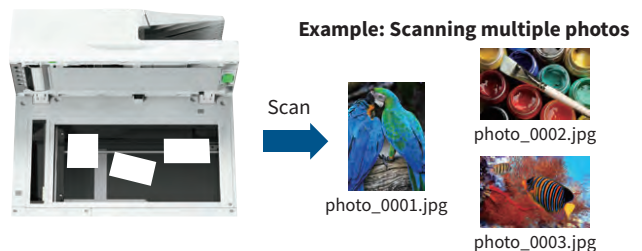
Tap on the LCD touchscreen's Auto Set button to have the MFP perform a host of actions automatically. It can reorient pages mixed in upside down, skip blank pages in a multi-page document, or determine scan resolution. The MFP can also tell whether a document being scanned is colour or B/W. If it is B/W it can automatically select the optimal setting for text—monochrome or greyscale. What's more, it can adjust skewed documents*², so you don't have to re-scan them. Automatic functions like these save you time and effort, while ensuring optimal scan results.

*1: Easy UI mode only. *2: PDF format only.



Multicrop and Image Crop Functions

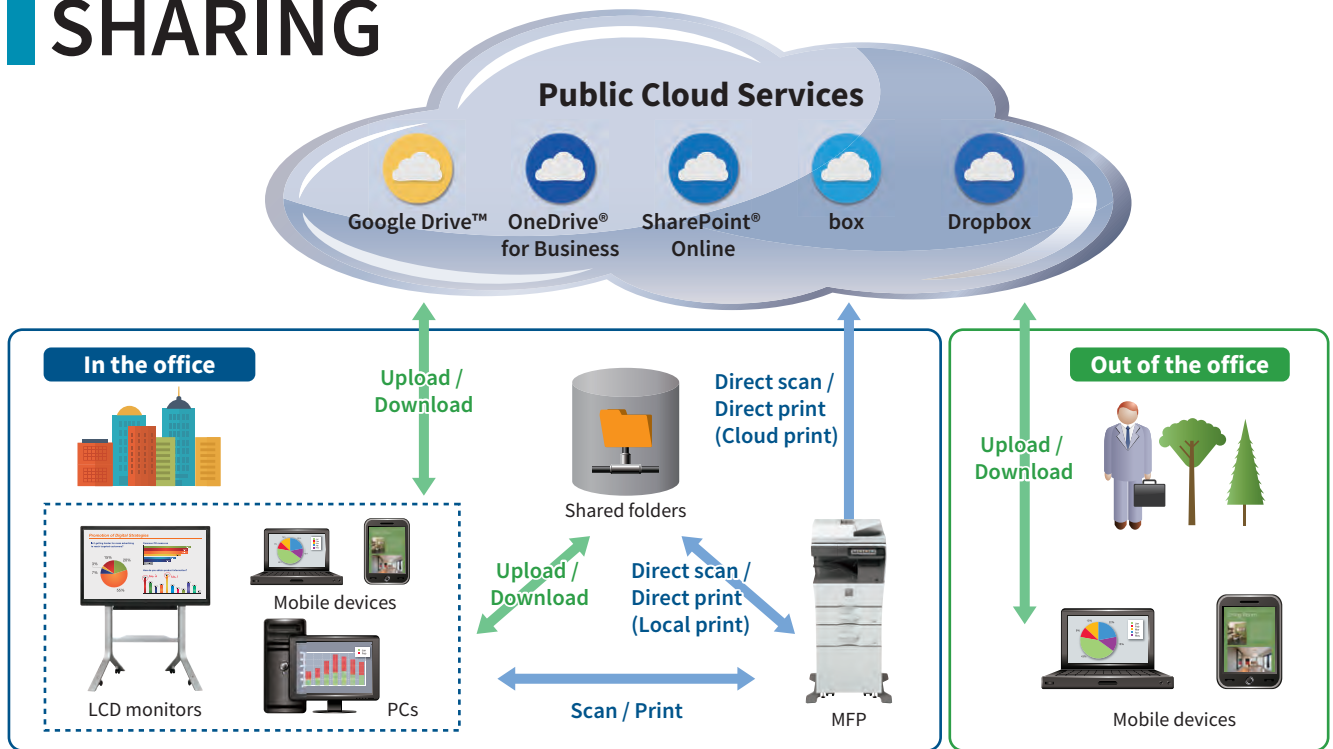
Multiple receipts, photos, and other items can be scanned all at once, with each one saved as a separate file. This helps you streamline the filing of receipts and bills. The MFP can also crop photos from documents such as magazine pages and save them as individual files.



Versatile Fax Functions

- **Super G3 Fax** function
- **Internet Fax** lets you exchange faxes via e-mail (option)
- **PC-Fax** sends PC documents directly to a fax machine via a phone line

SHARING



Link to Cloud Services*

This MFP doesn't just connect to your local server. It also connects with cloud services directly from its control panel. You can upload scanned data to Google Drive™, OneDrive® for Business, SharePoint® Online, Box, or Dropbox—or print directly from any of them. Cloud services help to make setting up and managing a server in your company more efficient. Once you log in to the MFP, its single sign-on feature allows you to quickly access multiple software services without having to sign in to each one separately.

* Contact a Sharp customer representative for details.

Application Portal*

Like a smartphone app store, Sharp's Application Portal offers apps that you can download and install on your MFP. You can access the application server and download apps directly from the MFP.

* Contact a Sharp customer representative for details.

Link with Mail Servers

Scanned data can be conveniently sent via your Gmail™ or Microsoft Exchange/Online* account. Scanned data that you send can be stored on the mail server with other sent items.

* Exchange Server 2010/2013/2016, Exchange Online

Sharp OSA (Open Systems Architecture)

Sharp OSA technology allows you to interact with intra-company systems and network applications right from the LCD control panel, offering a new realm of control and convenience. And since Sharp OSA utilises industry-standard network protocols, the MFP can easily integrate with third-party document management systems, enterprise resource planning software, workflow applications, and more. The latest version of Sharp OSA can reach beyond the firewall, enabling extensive system construction as well as services delivered over the Internet such as cloud services.

Link with Mobile Devices

• The **Sharpdesk Mobile***¹ print/scan app lets you easily link your mobile device to the MFP by simply holding it over the MFP's NFC card reader*² or by scanning the MFP's QR Code®.

*1: For details, see the Sharpdesk Mobile support website: https://global.sharp/products/copier/docu_solutions/mobile/sharpdesk_mobile/
*2: The NFC interface is for Android™ devices. Requires commercially available NFC card reader. Contact a Sharp customer representative for details.

• Popular mobile printing technologies such as **AirPrint** and **Sharp Print Service Plugin** are supported.

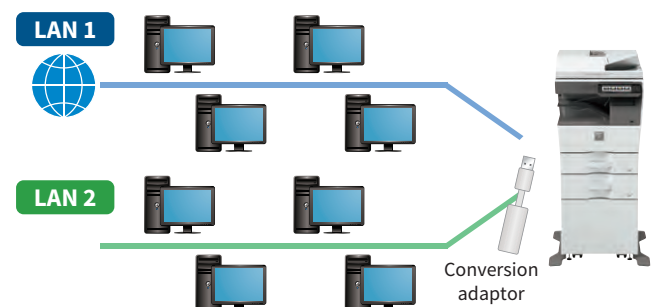
Wireless Connections

The MFP offers ultra-handly wireless access, enabling convenient access to the MFP even from places where it's difficult to connect a LAN cable.

Secondary Ethernet Port*

A secondary Ethernet port allows the MFP to support two separate networks. You can set up different IP addresses and security settings for each line—one in-house, say, and one for visitors. Alternatively, the MFP could be set up to access a web-connected office network as well as a high-security offline network.

* Requires an Ethernet adaptor that supports two lines. Contact a Sharp customer representative for details.



OPERATION

Easy User Interface

Operating the MFP is easy and intuitive with the 7.0-inch colour LCD touchscreen. Just tap your dedicated user icon to access a personally customised operation screen. In Easy UI mode, the touchscreen displays simple icons for frequently used functions. And with the Advanced Preview function, you can check document finishes, edit pages in advance, and more.



Quick login



Preview mode (3D)

Device Management

Sharp Remote Device Manager* (SRDM) gives administrators centralised control of their networked MFPs. This software covers system setup, security settings, troubleshooting, and more.

* Contact a Sharp customer representative for availability and other details.

Free-Tilting Control Panel

The control panel can be tilted freely at various angles for easy viewing and easy operation, even from a wheelchair.



Direct Printing/Scanning with USB Drives

Insert a USB drive into the MFP and a command screen will automatically pop up on the LCD. Right away you can print files from the USB drive or scan documents directly to the USB drive.



LED Status Lamps

Next to the control panel are two LED lamps: one red, one green. These light up to notify you—even from a distance—of the status of the machine.



SECURITY

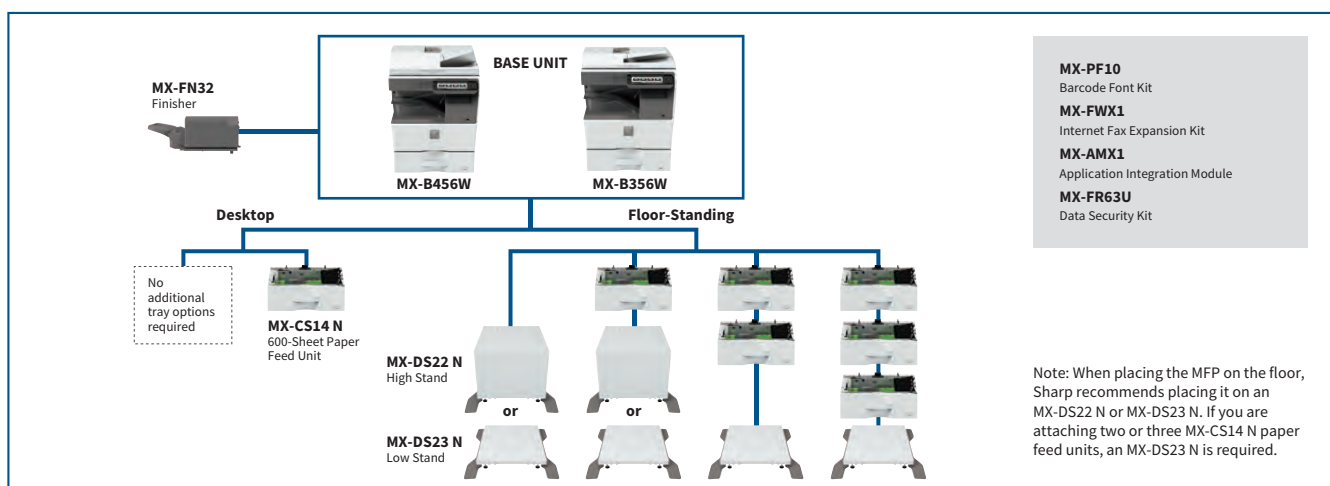
Network Security and Access Control

- **S/MIME** provides secure e-mail communications*
* Only when e-mailing scanned data.
- **User authentication** prevents unauthorised MFP use by requiring passwords
- **Active Directory**® enables integrated management of user credentials, thereby providing a highly secure and efficient environment for system administrators
- **Whitelisting** protects the MFP from fraudulent programs trying to access the file system and obtain information
- **Image Job Log*** creates and externally stores an image file (PDF) and a log file (XML) for each job. This helps identify unauthorised use of the MFP.
* Contact a Sharp customer representative for details on activating this function.

Document and Data Protection

- **Document Control*** prevents unauthorised use of confidential documents by embedding copy prevention data in them
* Requires optional MX-FR63U. May not work with certain types of paper, documents (such as those with a lot of photos), or MFP settings.
- **Hidden Pattern Copy/Print** embeds a watermark onto a document
- Job data is automatically **encrypted*** before being saved to the MFP's internal storage
* Contact a Sharp customer representative for details on activating this function.
- Retained data can be **erased** when it's time to replace the MFP, preventing the leakage of confidential information
- **Firmware self-recovery** prevents data leaks and firmware damage by automatically restoring files when abnormal activity is detected

SYSTEM CONFIGURATION



Certain optional equipment may not be available in some areas.

SPECIFICATIONS

General

Type	Desktop
Engine speed	A4*1: Max. 45/35 ppm Letter (8 1/2" x 11")*1: Max. 47/37 ppm
Control panel display	7.0-inch colour LCD touchscreen
Paper size	Max. A4 (8 1/2" x 14"), min. A6 (5 1/2" x 8 1/2")
Paper capacity (80 g/m ²)	Standard: 550 sheets (500-sheet tray and 50-sheet multi-bypass tray) Maximum: 2,350 sheets (550 sheets & optional 600-sheet tray x 3)
Paper weight	Tray 1: 60 g/m ² to 105 g/m ² (16 lbs bond to 28 lbs bond) Trays 2-4 (MX-CS14 N): 55 g/m ² to 220 g/m ² (13 lbs bond to 80 lbs cover) Multi-bypass tray: 55 g/m ² to 220 g/m ² (13 lbs bond to 80 lbs cover)
Warm-up time*2	20 sec.*3
Memory	5 GB (copy/print shared) 500 GB HDD*4
Power requirements	Rated local AC voltage ±10%, 50/60 Hz
Power consumption	Max. 1.84 kW (220 V to 240 V)
Dimensions (W x D x H)*5	MX-B456W: 492 x 517*6 x 638 mm (19 3/8" x 20 23/64" x 25 1/8") MX-B356W: 492 x 517*6 x 588 mm (19 3/8" x 20 23/64" x 23 5/32")
Weight (approx.)	MX-B456W: 33 kg (72.8 lbs) MX-B356W: 31 kg (68.4 lbs)

Copier

Original paper size	Max. A4 (8 1/2" x 14")
First copy time*7	MX-B456W: 3.7 sec. MX-B356W: 5.3 sec.
Continuous copy	Max. 9,999 copies
Resolution	Scan: 600 x 600 dpi, 600 x 400 dpi Print: 600 x 600 dpi, 9,600 (equivalent) x 600 dpi (depending on copy mode)
Gradation	Equivalent to 256 levels
Zoom range	25% to 400% (25% to 200% using DSPF/RSPF) in 1% increments
Pre-set copy ratios	Metric: 10 ratios (5R/5E), inch: 7 ratios (4R/3E)

Scanner

Scan method	Push scan (via control panel) Pull scan (TWAIN-compliant application)
Scan speed*8 (colour & B/W)	[MX-B456W] One-sided: Max. 70 originals/min. Two-sided: Max. 110 originals/min. [MX-B356W] One-sided: Max. 40 originals/min.
Resolution	Push scan: 100, 150, 200, 300, 400, 600 dpi Pull scan: 75, 100, 150, 200, 300, 400, 600 dpi 50 dpi to 9,600 dpi via user setting*9
File formats	TIFF, PDF, PDF/A-1a, PDF/A-1b, encrypted PDF, XPS, compact PDF*10, JPEG*10, searchable PDF, OOXML (docx, xlsx, pptx), text (TXT [UTF-8]), rich text (RTF)
Scan destinations	Scan to e-mail/desktop*11/FTP server/network folder (SMB)/ USB drive/HDD

*1: Short-edge feeding.

*2: In a standard measurement environment. May vary depending on operating conditions and environment.

*3: When starting the MFP via the power button. 30 sec. when starting via the main power switch.

*4: HDD capacity depends on procurement and sourcing status.

*5: Including adjusters and protuberances.

*6: 533 mm (20 93/64") when the control panel is tilted at the flattest horizontal angle.

*7: Short-edge feeding of A4 (8 1/2" x 11") sheets from 1st paper tray, using document glass, MFP in fully ready condition. May vary depending on operating conditions and environment.

*8: Scan speed will vary depending on the type of document and the scan settings. MX-B456W: Based on Sharp's A4 standard chart, using document feeder, short-edge feeding, and factory default settings. MX-B356W: Based on Sharp's A4 standard chart, using document feeder, short-edge feeding, one-sided scanning, and factory default settings.

*9: Resolution will vary depending on the size of the scanned area.

*10: Colour/greyscale only.

*11: Requires Network Scanner Tool Lite.

*12: Storage capacity will vary depending on the type of document and the scan settings.

*13: Based on Sharp's standard chart with approx. 700 characters (A4 or 8 1/2" x 11" short-edge feeding) at standard resolution in Super G3 mode, 33,600 bps, JBIG compression.

Document Filing

Document filing capacity*12	Main and custom folders: 20,000 pages or 3,000 files Quick file folder: 10,000 pages or 1,000 files
Stored jobs	Copy, print, scan, fax
Storage folders	Quick file folder, main folder, custom folder (max. 1,000 folders)

Printer

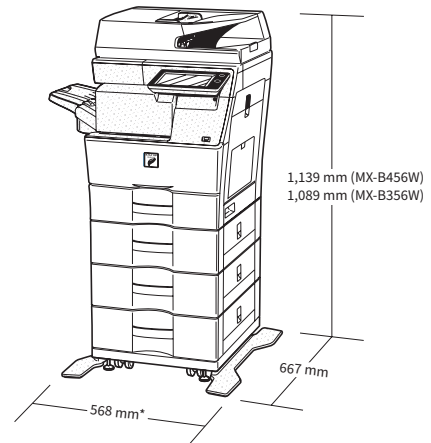
Resolution	600 x 600 dpi, 9,600 (equivalent) x 600 dpi
Interface	USB 2.0 (host, high-speed), 10Base-T/100Base-TX/1000Base-T, wireless LAN (IEEE 802.11 b/g/n)
Supported OS	Windows Server® 2008, Windows Server® 2008 R2, Windows Server® 2012, Windows Server® 2012 R2, Windows Server® 2016, Windows Server® 2019, Windows® 7, Windows® 8.1, Windows® 10, Mac OS 10.9, 10.10, 10.11, 10.12, 10.13, 10.14, 10.15
Network protocols	TCP/IP
Printing protocols	LPR, Raw TCP (port 9100), POP3 (e-mail printing), HTTP, FTP for downloading print files, IPP, SMB, WSD
PDL	PCL 6 emulation, Adobe® PostScript® 3™
Available fonts	80 fonts for PCL, 139 fonts for Adobe PostScript 3

Facsimile

Compression method	MH/MR/MMR/JBIG
Communication protocol	Super G3/G3
Transmission time	Less than 3 seconds*13
Modem speed	33,600 bps to 2,400 bps with automatic fallback
Transmission resolution	From Standard (203.2 x 97.8 dpi) to Ultra Fine (406.4 x 391 dpi)
Recording size	A4 to A5 (8 1/2" x 14" to 5 1/2" x 8 1/2")
Memory	1 GB (built-in)
Greyscale levels	Equivalent to 256 levels

- Design and specifications are subject to change without prior notice.
- Microsoft, Excel, PowerPoint, OneDrive, SharePoint, Active Directory, Windows Server, and Windows are either registered trademarks or trademarks of Microsoft Corporation in the US and/or other countries. PCL is a registered trademark of Hewlett-Packard Company. Adobe and PostScript 3 are either registered trademarks or trademarks of Adobe in the US and/or other countries. Google Drive, Gmail and Android are trademarks of Google LLC. The Google Drive trademark is used with permission from Google LLC. Box is a trademark, service mark, or registered trademark of Box, Inc. Dropbox is a trademark or registered trademark of Dropbox, Inc. QR Code is a registered trademark of DENSO WAVE INCORPORATED in Japan and other countries. AirPrint and Mac are trademarks of Apple Inc., registered in the US and other countries. Qualcomm DirectOffice is a product of Qualcomm Technologies, Inc. and/or its subsidiaries. Qualcomm is a trademark of Qualcomm Incorporated, registered in the US and other countries. DirectOffice is a trademark of CSR Imaging US, LP, registered in the US and other countries. All other brand names and product names may be trademarks or registered trademarks of their respective owners.

Qualcomm® DirectOffice™



* 878 mm when finisher tray and multi bypass tray are extended.

MX-B456W shown with optional equipment.

Distributed by:

SHARP