

Digital Camera System Solution

Jan. 14, 2011

Input/Output (Including UI, Sensors)

For human body (proximity of face) detection

■ Proximity sensor

- Detecting distance: TYP. 65 mm
- Countermeasure against external disturbing light (inverter fluorescent light, etc.)



For color image input

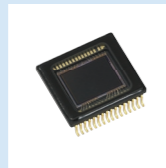
«VGA at 30 fps»

- 1/2.3-type 10.55-Mpixel CCD
- 1/2.3-type 12.53-Mpixel CCD
- 1/2.5-type 8.50-Mpixel CCD

«720p at 30 fps»

- 1/2.3-type 10.55-Mpixel CCD
- 1/2.3-type 12.53-Mpixel CCD
- 1/2.3-type 14.58-Mpixel CCD

- Industry's highest level of sensitivity and industry's lowest level of smear ratio
- Industry's smallest number range of peripheral devices



For wireless LAN

- Wireless LAN/Bluetooth combo module
- 2.4 GHz band power amplifier



Mechanical Structure

For mechanical position detection and rotation detection

■ Compact transmissive-type photointerrupter

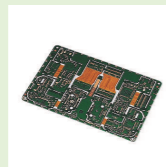
- Compact, transmissive type
- Lineup of both board-insertion and surface-mount types



For part mounting and circuit connection

■ Advanced Flex (ADF) printed circuit board «customizable»

ADF: Advanced Flex printed circuit board

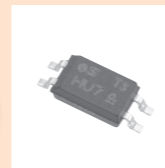


Power Supply

For insulation of and transfer between high- and low-voltage sides of power supply

■ Photocoupler compliant with safety standards

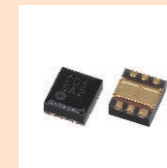
Safety standard approved / compliant



For LCD backlight

■ CMOS chopper regulator for white LED driving

- High efficiency (90%), high withstand voltage (30 V)
- Enables driving of up to 6 LEDs in series



Display

For LCD backlight

■ High-luminosity white surface-mount LED

- Thin, high luminosity
- High rendering color products are also available



For indicator

■ Compact LED

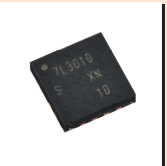
- Compact, thin, single-color



For flashlight

■ LED driver

- Current for LED driving: MAX. 800 mA
- External coil not necessary, contributes to space-saving



For image display

■ LCD module

- These LCD modules are only made to order.