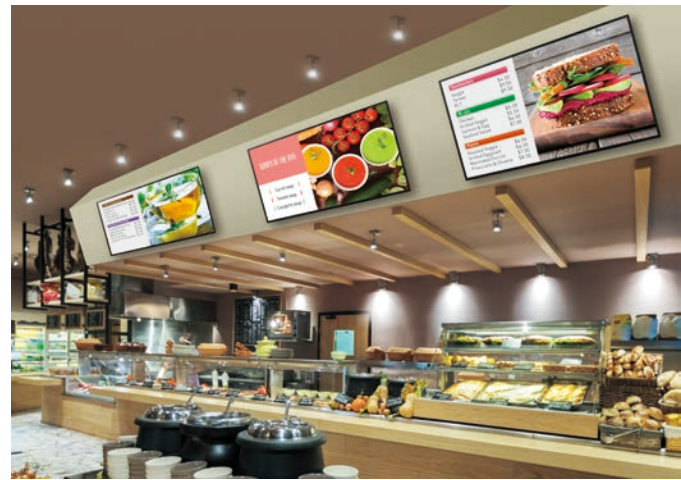


Be Original.

## SHARP e-Signage S Smarter Signage That Gets Your Message Right



Easily update content via simple folder management

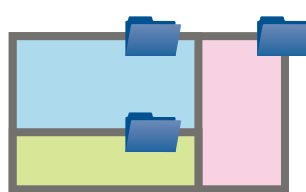
Create a folder and save content. Simply changing the linked folder data automatically updates its content.

### Full-Screen Signage Management



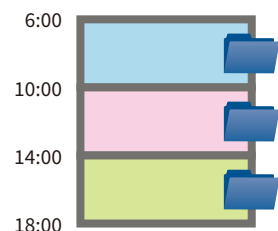
Create a different folder for each LCD monitor, store content in it, and link it to the monitor.

### Split-Screen Signage Management



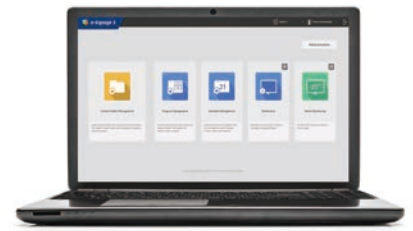
Each content folder can be linked to a layout frame. This means you can split the screen and display several sources of content.

### Timetable Management



Content folders can be linked to individual timetables, so content is delivered to a monitor at a specified time and date.

# Create Professional Digital Signage via Simple Folder Management



### Operational Setup

- Create folder and store content**
- Create program/schedule**
- Distribute and display according to schedule**  

Send content to monitor for display at designated time/date

Use Program Editor or Schedule Editor

### Program Management

- Free-Layout Frames**  
 Diverse content such as still images, videos, HTML, and scrolling messages can be displayed in layout frames. You can easily enlarge these frames and adjust their position.
- Linking Folders**  
 Simply drag and drop a created content folder into a layout frame to link them with each other.

## Choice of SHARP e-Signage S Software Editions

Choose an edition that matches your needs in terms of scale, content, and system configuration.

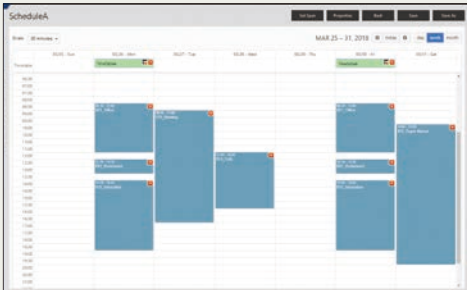
	Product Name	Features	System Configuration (Examples)	No. of Operators
Standalone System	<b>PN-SS21</b> Standalone Edition	Scheduled programs stored on a USB memory device or SD card can be <b>delivered</b> and <b>displayed</b> at a designated time on a <b>single LCD monitor or to multiple screens</b> .	<ul style="list-style-type: none"> <li>Standalone operation  </li> <li>USB memory device or SD card operation  </li> </ul>	1
Network System	<b>PN-SS22</b> Network Edition	Same functions as PN-SS21, plus enables programs to be distributed <b>via the network up to 100 PCs</b> for display on LCD monitors according to a set schedule.		1
	<b>PN-SS25</b> Pro Edition	Same functions as PN-SS22, plus support for <b>larger and more complex systems</b> . Can distribute scheduled programs to <b>up to 1,000 PCs</b> as well as to registered groups of monitors.		1
	<b>PN-SW25</b> Web Server Edition	Same functions as PN-SS25 and <b>operable by multiple people</b> . Programs, schedules, and other items can be centrally stored and managed on a web server database (i.e., a controller PC), <b>accessible by up to 50 remote PCs</b> . Hosted on your network.		1 to 50

\* PN-SV21 Player must be installed.

SHARP e-Signage S provides total support for creating, scheduling, distributing, and managing a wide range of signage programs for Sharp LCD monitors. This software excels on monitors installed in a variety of locations, including offices, commercial establishments, and public spaces. SHARP e-Signage S lets you create and edit signage programs easily, via simple drag-and-drop operation. You can lay out diverse content intuitively, create display schedules, and monitor the operational status of designated LCD monitors. Sharp offers an array of solution packages to match a variety of signage needs, from a single standalone display to a network of multiple monitors—all without any hassle.



## Schedule Management



### • Editing the Timetable/ Schedule

Create a timetable and schedule to set the time and date to display.

### • Linking Folders

Simply drag and drop content folders into specified time and date locations to link them with each other.



## Schedule Distribution

### • Easy Delivery

Based on the program schedule created in Schedule Management, you can send content to a target monitor for display.

### • Advanced Functionality\*<sup>1</sup>

If there's an emergency, operators can distribute emergency news flashes and scrolling messages\*<sup>2</sup> without changing the original time schedule.

\*<sup>1</sup> Available on PN-SW25/SS25/SS22.

\*<sup>2</sup> Emergency scrolling message distribution available on PN-SW25/SS25.



## Status Monitoring

### • Advanced Functionality

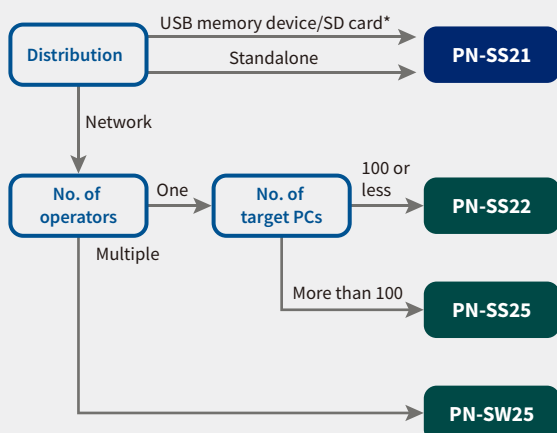
Even if you're at a distant location, you can access the controller PC and remotely monitor the status of the LCD monitor and the programs it's displaying. Information appears in lists or thumbnails.

Note: Available on PN-SW25/SS25/SS22.

nt delivery, and management.

No. of Target PCs	Product Name	Features
1	<b>PN-SV21 Player</b>	Dedicated software for displaying scheduled programs on Sharp LCD monitors. Required when using PN-SW25, PN-SS25, PN-SS22, or PN-SS21 with USB memory device or SD card distribution.

## SHARP e-Signage S Quick Selection Guide

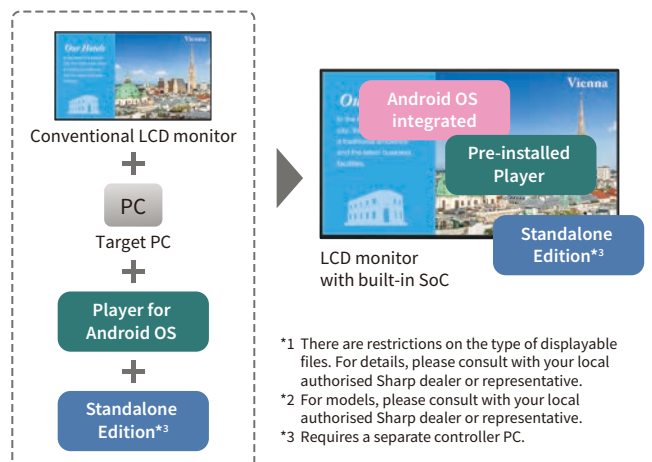


\* USB memory device or SD card distribution also possible on other editions.

## Out-of-the-Box Digital Signage Solution

### Pre-Installed SHARP e-Signage S Player\*<sup>1</sup> and Bundled Standalone Edition

A Sharp LCD monitor\*<sup>2</sup> with a built-in SoC (System on a Chip) controller comes bundled with the standalone edition of SHARP e-Signage S software. The player for this software is pre-installed along with the integrated Android™ OS. Because the LCD monitor is ready to display your signage right out of the box, you save on startup costs.



\*<sup>1</sup> There are restrictions on the type of displayable files. For details, please consult with your local authorised Sharp dealer or representative.

\*<sup>2</sup> For models, please consult with your local authorised Sharp dealer or representative.

\*<sup>3</sup> Requires a separate controller PC.

### SHARP Open Architecture Platform

A Sharp LCD monitor with a built-in SoC controller features the SHARP Open Architecture Platform. This allows third-party software developers to create custom signage applications that open up rich possibilities for digital signage in retail, office, and other settings.

Note: For details, please consult with your local authorised Sharp dealer or representative.

## Displayable Content

Frame	Content	File Format	Required Software
Background Frame Frame 1 to 4	Still image	.jpeg .jpg .gif .png .bmp	—
	Video* <sup>1</sup>	.avi .mpeg .mpg .wmv .asf .mov* <sup>2</sup> .mp4* <sup>2</sup>	Microsoft® Windows Media® Player
	Flash* <sup>3</sup>	.swf	Adobe® Flash® Player
	HTML	.htm .html	Microsoft® Internet Explorer®
	Execution file* <sup>3</sup>	.exe	—
	Signage widget* <sup>3</sup>	.anc .dig .erc .twf .whr	—
Message Frame 1 to 2	Scroll message	.tlp	—
Audio Frame	Audio	.wav .mp3 .au .aif .aiff .wma .mid .midi .mov* <sup>2</sup> .mp4* <sup>2</sup>	Microsoft® Windows Media® Player

\*1 There are restrictions on the type of displayable files on the pre-installed player of a Sharp LCD monitor with built-in SoC. For details, please consult with your local authorised Sharp dealer or representative.

\*2 Please consult with your local authorised Sharp dealer or representative before installing codecs or software that haven't been officially approved for operation on the OS.

\*3 Cannot be displayed on the pre-installed player of a Sharp LCD monitor with built-in SoC.

## Feature Comparison

	Web Server (PN-SW25)	Pro (PN-SS25)	Network (PN-SS22)	Standalone (PN-SS21)	
Program creation and editing	○	○	○	○	
Timetable/schedule creation and editing	○	○	○	○	
No. of operators	1 to 50	1	1	1	
Distribution	Via USB memory device/SD card	○	○	○	
	Via network (push distribution)	○	○	○	
	Via network (pull distribution)	○	○	○	
	No. of target PCs	Max. 1,000	Max. 1,000	Max. 100	1
	Emergency news flash*	○	○	○	×
	Reserved distribution	○	○	○	×
	Emergency scroll message	○	○	×	×
Updater distribution	○	○	○	×	
Status monitoring	○	○	○	×	
Monitor control	○	○	○	○	
Operation group management	○	×	×	×	
Multi-user management	○	×	×	×	
User authority management	○	×	×	×	
Monitor group management	○	○	×	×	

\* Emergency news flash ("break-in program")

## System Requirements

	Web Server (PN-SW25)		Pro (PN-SS25)	Network (PN-SS22)	Standalone (PN-SS21)	Player (PN-SV21)	
	Controller PC	Operation PC	Controller PC	Controller PC	Controller PC	Target PC	
PC	CPU	1.6 GHz or higher					
	OS* <sup>1</sup>	Microsoft® Windows® 7/8.1/10	○	○	○	○	○* <sup>4</sup>
		Microsoft® Windows Server® 2008/2008 R2/2012/2012 R2/2016	○	○	○	○	—
	Memory	2 GB or more					
Hard disk	500 MB or more free space (additional space required for saving data)						
Monitor	For controller PC* <sup>2</sup>	Resolution	1,280 x 1,024 dots or more			—	
		Colours	Full colour			—	
Browser	For operation	Microsoft® Internet Explorer® 11/Microsoft® Edge/Google Chrome™				—	
Other software	Microsoft® Internet Explorer®/Microsoft® Windows Media® Player* <sup>3</sup> /Adobe® Flash® Player						

Note: The OS must meet the PC's minimum operation requirements. To properly display certain content, the PC may need higher system performance than that indicated in the table.

\*1 Compatible with 32-bit and 64-bit versions.

\*2 PC monitor used to create and edit programs and schedules.

\*3 Depending on the display content, you may need to install codecs or player software. Please consult with your local authorised Sharp dealer or representative before installing codecs or software that haven't been officially approved for operation on the OS.

\*4 For Windows 10, use desktop mode.

Microsoft, PowerPoint, Internet Explorer, Windows, Windows Server, Windows Media, and Microsoft Edge are either registered trademarks or trademarks of Microsoft Corporation in the US and/or other countries. Android and Google Chrome are trademarks of Google LLC. Adobe and Flash are either registered trademarks or trademarks of Adobe Systems Incorporated in the US and/or other countries. All other brand names and product names may be trademarks or registered trademarks of their respective owners.

All screen images appearing in this brochure are simulated. Design and specifications are subject to change without prior notice.

Distributed by:

# SHARP