

Quick Start Manual



BEFORE USING THE MACHINE



Functions of the machine and procedures for placing originals and loading paper



COPIER

Using the copy function



PRINTER

Using the printer function



SCANNER

Using the scan function



DOCUMENT FILING

Storing jobs as files on the local drive



MANUAL FINISHING

Using the manual finishing function



SYSTEM SETTINGS

Configuring settings to make the machine easier to use

OPERATION MANUALS AND HOW TO USE THEM


Start Guide



This manual explains basic procedures for using the machine, cautions for safe use of the machine, and information for the administrator. Read this manual before using the machine. For detailed operating procedures and troubleshooting information, see the manuals in PDF format.

Operation Guide (Displayed on the touch panel)



This guide appears when you tap the  icon on the machine's touch panel. The guide explains the basic procedures for operating the machine. In addition, the manuals can be printed ([page 3](#)). To print a manual, see "[HOW TO PRINT A MANUAL \(page 4\)](#)".

User's Manual

Detailed explanations of the functions that can be used on the machine are provided in the "User's Manual". The User's Manual can be downloaded from the machine.

Download the User's Manual from the Web pages in the machine.

For the downloading procedure, see "[DOWNLOADING THE OPERATION GUIDE \(page 6\)](#)".



Other manual

Like the "User's Manual", some manuals as follow can be downloaded from our website and viewed on your computer.

Manual types may be updated. For more information, see our website.

AirPrint Guide

This guide explains how to use AirPrint.



User's Manual (Address Book Registration)*

This manual explains how to register, edit, and delete the address book.



Software Setup Guide*

This guide explains how to install the software and configure settings to use the machine as a printer or scanner.



Troubleshooting*

This manual provides answers to frequently asked questions regarding the operation of the machine in each mode.



Quick Start Manual*

This manual is intended to help you get started using the basic and convenient functions of the machine.



User's Manual (Web Page Settings)*

This manual explains the procedures for configuring machine settings from your computer using the web page settings function embedded in the machine.



User's Manual (Touch Panel Operation)

This manual explains how to operate the touch panel and customize the user interface.



Print Release Guide

This guide explains how to use the print release function. When you have multiple MFPs that support the print release function on the same network, you can access and print the data that is saved on a MFP from any other MFPs.



Cloud Connect Guide

This guide explains how to connect the machine to a cloud service on the Internet, enabling you to upload scanned data and print data stored in the cloud.



* These manuals can be printed by following the instruction in Operation Guide.

HOW TO PRINT A MANUAL

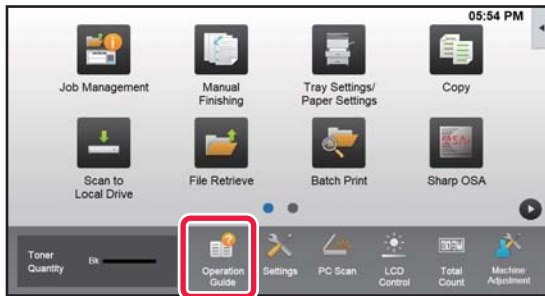
1



Press the [Home Screen] key.

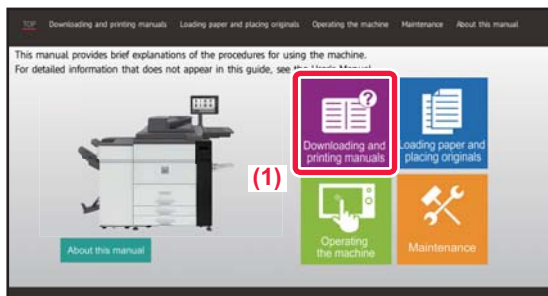
Home screen appears.

2



Tap the [Operation Guide] key.

3



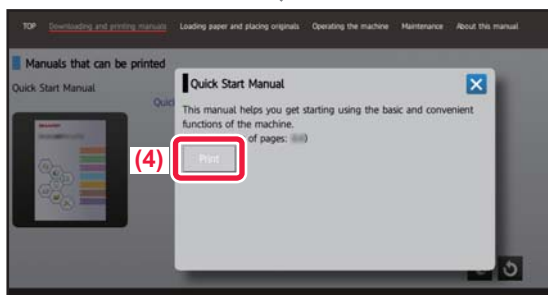
Set in a touch panel.

(1) Tap the [Downloading and printing manuals] key.



(2) Tap the [Other manuals] key.

(3) Tap the manual icon.



(4) Tap [Print].

The Print Settings screen appears. Select settings and tap the [Start] key to start printing.

When a language is selected other than a language that is displayed by step 2 of [DOWNLOADING THE OPERATION GUIDE \(page 6\)](#) in the display languages on the touch panel, and [Operation Guide] is tapped, English may appear.

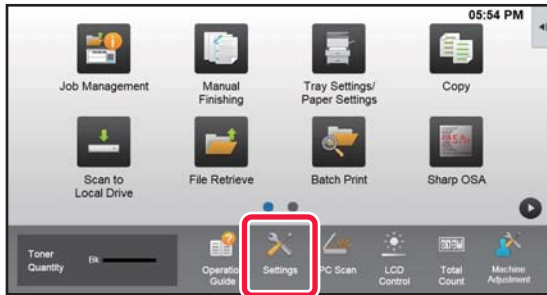
To change the language displayed on the touch panel, refer to the User's Manual.

ACCESSING THE WEB SERVER IN THE MACHINE

When the machine is connected to a network, the machine's built-in Web server can be accessed from a Web browser on your computer.

OPENING THE WEB PAGES

1

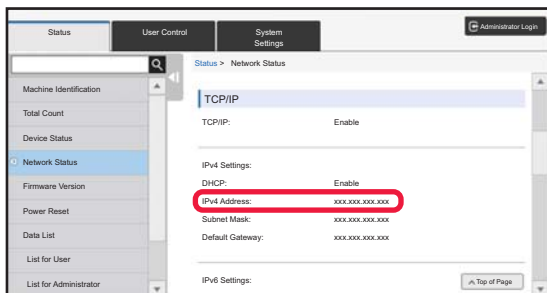


Tap the [Settings] key.

2

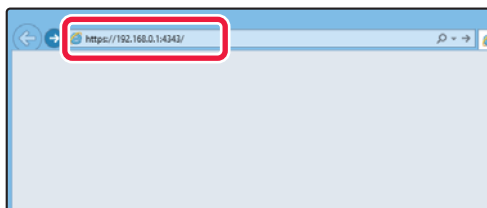
Tap [Status] → [Network Status] from the menu.

3



Scroll the screen down and check "IPv4 Address" in IPv4 Settings of TCP/IP.

4



Access the Web server in the machine to open the Web pages.

Start a Web browser on a computer that is connected to the same network as the machine and enter the IP address of the machine.

Recommended Web browsers

Internet Explorer: 11 or higher (Windows®),
Microsoft Edge (Windows®), Firefox (Windows®),
Safari (macOS®), Chrome (Windows®):

Latest version or immediately previous major release

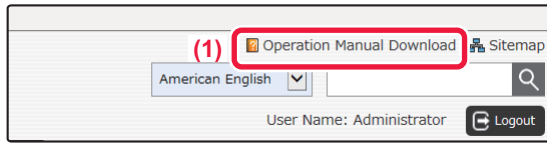
The Web page will appear.

The machine settings may require that user authentication is performed in order to open the Web page. Please ask the administrator of the machine for the password that is required for user authentication.

DOWNLOADING THE OPERATION GUIDE

The Operation Guide, which is a more detailed manual, can be downloaded from the machine's Web pages.

1



Click [Operation Manual Download] in the menu of the Web page.

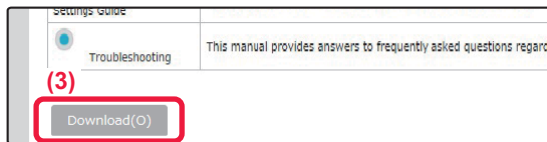
2



Select the desired language.

Only the displayed languages are supported.

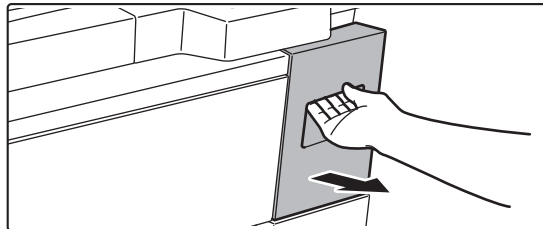
3



Select the manual you want to download, and click the [Download] button.

REPLACING TONER

When a toner replacement message appears, you can replace toner even while printing is in progress. Always open the toner cover to replace toner.



Do not open the bottom cover by mistake. This will cause printing to stop and may result in a misfeed.

TABLE OF CONTENTS

OPERATION MANUALS AND HOW TO USE THEM	2
HOW TO PRINT A MANUAL	4
ACCESSING THE WEB SERVER IN THE MACHINE	5
REPLACING TONER	6

BEFORE USING THE MACHINE

PART NAMES AND FUNCTIONS	10
TURNING ON THE POWER	13
OPERATION PANEL	14
PLACING ORIGINALS	16
ADJUSTING THE VOLUME	17
LOADING PAPER	18
SAVING CONTACTS IN THE ADDRESS BOOK	26
USER AUTHENTICATION	27
FUNCTIONS THAT CAN BE USED ON THE MACHINE	28

COPIER

MAKING COPIES	32
COPY MODE	34
COPYING ON SPECIAL PAPER (Bypass Copy)	35

PRINTER

PRINTING IN A WINDOWS ENVIRONMENT	38
PRINTING IN A macOS ENVIRONMENT	40
DIRECTLY PRINTING A FILE IN USB MEMORY	42

SCANNER

NETWORK SCANNER FUNCTION.....	44
SCANNING AN ORIGINAL	45
SCANNER MODE	47

DOCUMENT FILING

USES OF THE DOCUMENT FILING FUNCTION	50
SAVING A DOCUMENT ONLY (Scan to Local Drive).....	51
PRINTING A SAVED FILE.....	54

MANUAL FINISHING

MANUAL FINISHING.....	56
USING MANUAL FINISHING	56

SETTING MODE

SETTING MODE	60
--------------------	----



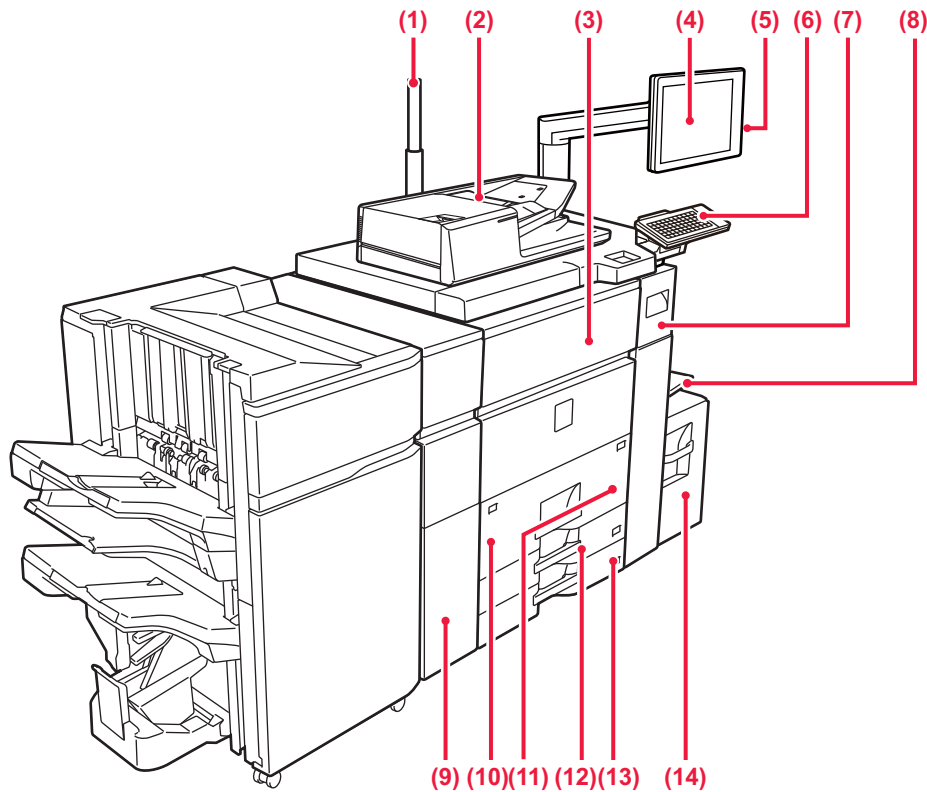
BEFORE USING THE MACHINE

This section provides general information about the machine, including the names and functions of the parts of the machine and its peripheral devices, and the procedures for placing originals and loading paper.

▶ PART NAMES AND FUNCTIONS	10
▶ TURNING ON THE POWER	13
▶ OPERATION PANEL	14
▶ PLACING ORIGINALS	16
▶ ADJUSTING THE VOLUME	17
▶ LOADING PAPER.....	18
▶ SAVING CONTACTS IN THE ADDRESS BOOK.....	26
▶ USER AUTHENTICATION.....	27
▶ FUNCTIONS THAT CAN BE USED ON THE MACHINE.....	28

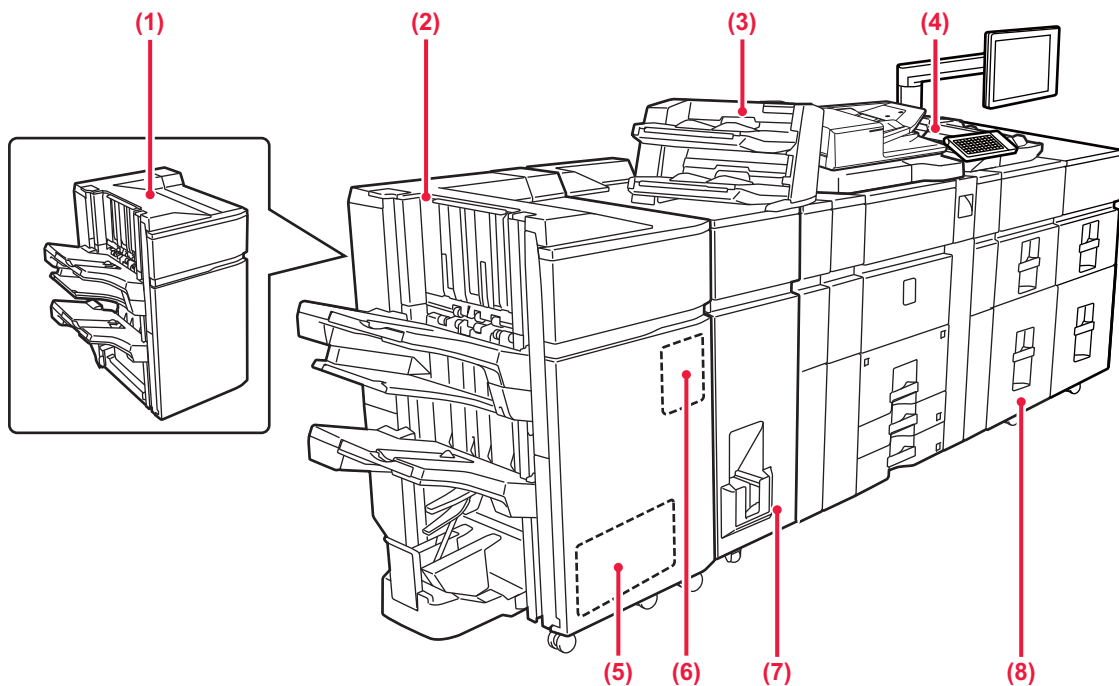


PART NAMES AND FUNCTIONS



- (1) **Status indicator**
- (2) **Automatic document feeder**
This automatically feeds and scans multiple originals. Both sides of 2-sided originals can be automatically scanned at one time.
▶ [USING THE AUTOMATIC DOCUMENT FEEDER \(page 16\)](#)
- (3) **Front cover**
Open this cover to switch the main power switch to "On" or "Off".
▶ [TURNING ON THE POWER \(page 13\)](#)
- (4) **Operation panel**
This panel hosts the [Power] button, [Power Save] button/indicator, [Home Screen] button/indicator, main power indicator and touch panel. Use the touch panel to operate each of these functions. An NFC touch point area also appears.
▶ [OPERATION PANEL \(page 14\)](#)
- (5) **USB port (A type)**
This is used to connect a USB device such as a USB memory device to the machine. Supports USB 2.0 (Hi-Speed).
- (6) **Keyboard**
Use this as a substitute for the soft keyboard displayed on the touch panel.
- (7) **Toner cover (Upper front cover)**
Open this cover to replace the toner cartridge or to remove misfed paper in the paper pass unit.
▶ [REPLACING TONER \(page 6\)](#)
- (8) **Bypass tray**
Use this tray to feed paper manually. When loading paper larger than 8-1/2" × 11"R or A4R, pull out the extension guide.
▶ [LOADING PAPER IN OTHER TRAYS \(page 21\)](#)
- (9) **Curl correction unit***
This punches and outputs paper.
- (10) **Tray 1**
Store paper in this tray. Up to 1200 sheets can be stored.
▶ [LOAD PAPER INTO THE TRAY 1/2 \(page 19\)](#)
- (11) **Tray 2**
Store paper in this tray. Up to 800 sheets can be stored.
▶ [LOAD PAPER INTO THE TRAY 1/2 \(page 19\)](#)
- (12) **Tray 3**
Store paper in this tray. Up to 500 sheets can be stored.
▶ [LOAD PAPER INTO THE TRAY 3/4 \(page 20\)](#)
- (13) **Tray 4**
Store paper in this tray. Up to 500 sheets can be stored.
▶ [LOAD PAPER INTO THE TRAY 3/4 \(page 20\)](#)
- (14) **Tray 5 (MX-LC12)***
Store paper in this tray. Up to 3500 sheets can be stored.

* Peripheral device. For more information, see the User's Manual.

**(1) Finisher (large stacker)***

This staples paper. A punch module can also be installed to punch holes in output paper.

(2) Saddle Stitch Finisher (large stacker)*

This staples and folds paper. A punch module can also be installed to punch holes in output paper. You can also perform stapling manually.

(3) Inserter*

Covers and insertion sheets to be inserted into printed sheets can be loaded. Using the manual finishing function, you can directly feed paper into the finisher (large stacker) or saddle stitch finisher (large stacker) to staple, punch or fold the paper.

(4) Bypass tray*

Use this tray to feed paper manually. When loading paper larger than 8-1/2" × 11"R or A4R, pull out the extension guide.

► [LOADING PAPER IN OTHER TRAYS \(page 21\)](#)

(5) Trimming module*

This trims the excess of saddle-stitched output.

(6) Punch module*

This is used to punch holes in output.

(7) Folding unit*

This folds and outputs paper.

(8) Large capacity trays*

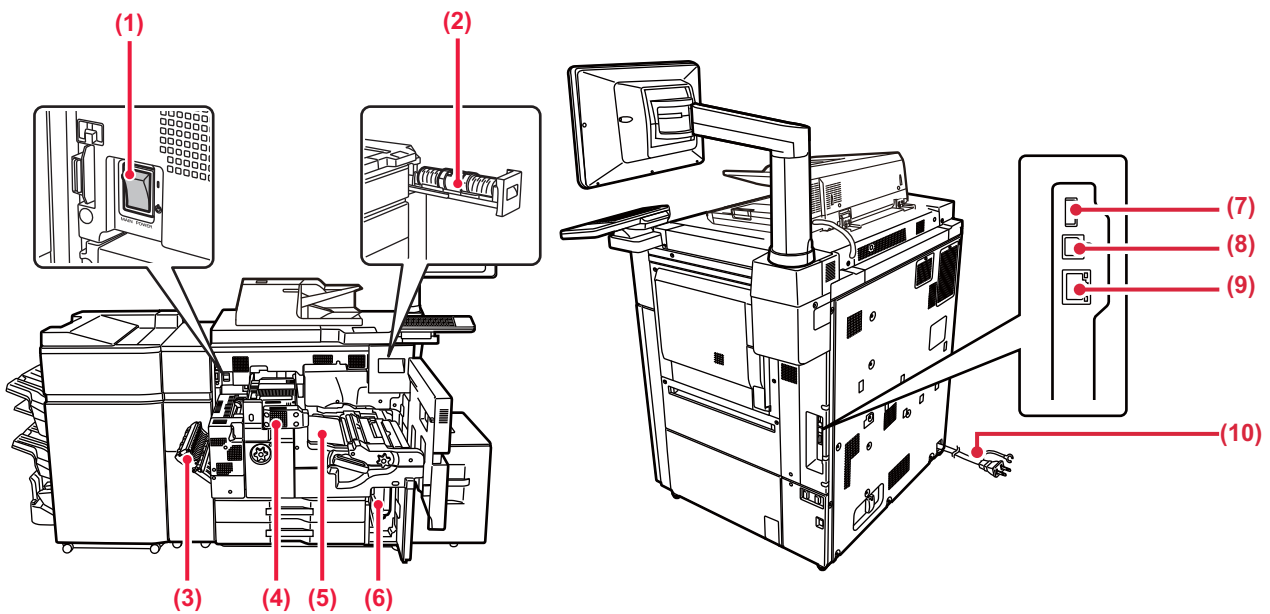
Store paper in this tray. Up to 2500 sheets can be stored in each tray.

► [Large capacity trays \(page 24\)](#)

* Peripheral device. For more information, see the User's Manual.



BEFORE USING THE MACHINE



(1) The main power switch

Use this switch to turn on the power for the machine.

(2) Toner cartridge

This cartridge contains toner.

When the toner in a cartridge runs out, the cartridge of the color that ran out must be replaced

(3) Paper reversing section cover

This unit is used for reversing paper when 2-sided printing is performed. Open this cover to remove a paper misfeed.

(4) Fusing unit

Heat is applied here to fuse the transferred image onto the paper.

(5) Transfer belt

This belt takes the image formed with toner off the photoconductive unit and transfers the image onto paper.

(6) Waste toner bottle

This bottle collects excess toner that is produced during printing.

(7) USB port (A type)

This is used to connect a USB device such as a USB memory device to the machine. Supports USB 2.0 (Hi-Speed).

(9) LAN connector

Connect the LAN cable to this connector when the machine is used on a network. Use a shielded LAN cable.

(10) Power plug

* Peripheral device. For more information, see the User's Manual.



TURNING ON THE POWER

This section describes how to turn on/off the machine's power and how to restart the machine.

Operate two power switches: the main power switch inside the front cover, located in the lower left corner, and the [Power] button on the operation panel.

Turning on the power

- Turn the main power switch to the " | " position.
- When the main power indicator lights in green, press the [Power] button.

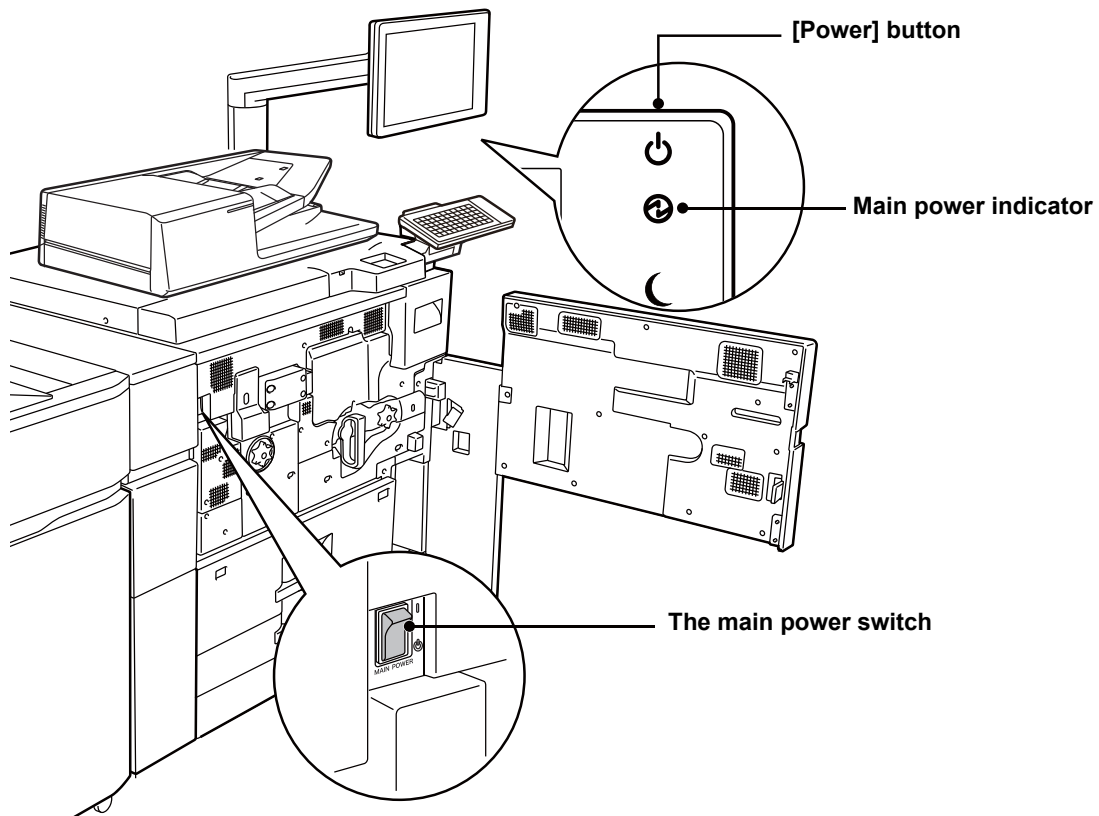
Turning off the power

Press the [Power] to turn off the power.

To turn off the power for an extended time, press the [Power] button to turn off the power, and switch the main power switch to the "⏻" position after the operation panel screen disappears.

Restart the machine

Turn off the power by pressing the [Power] button and then press it again to turn on the power.



- When turning off the main power switch, press the [Power] button on the operation panel and then turn the main power switch to the "⏻" position.
In a sudden case of main power outage, turn the power for the machine back on and then turn it off in the correct order. If the machine is left for a long time with the main power having been turned off prior to the [Power] button being turned off, abnormal noises, degraded image quality or other problems may result.
- Turn off both the [Power] button and the main power switch and unplug the power cord if you suspect a machine failure, if there is a bad thunderstorm nearby, or when you are moving the machine.

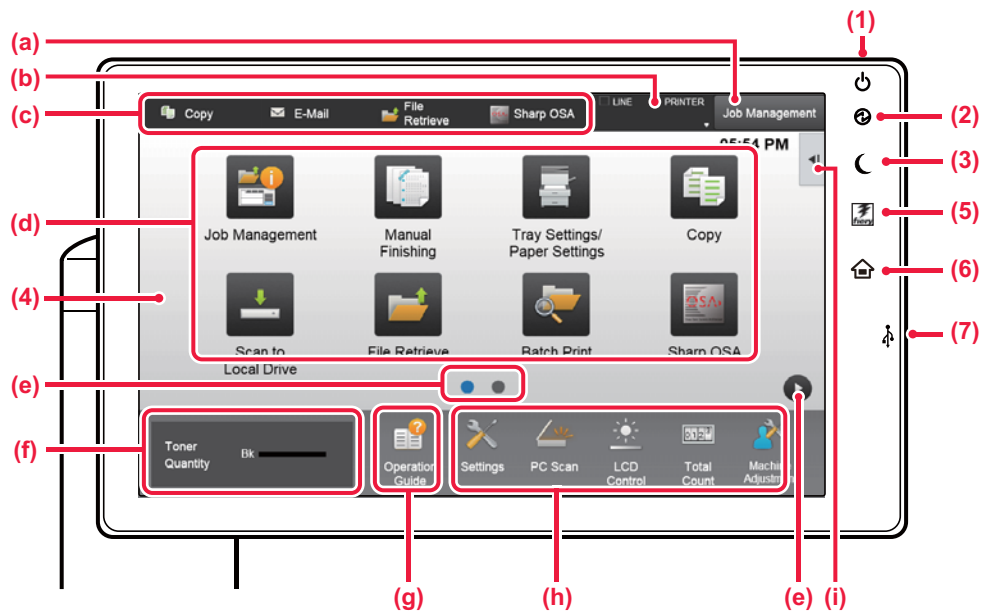


In order for some settings to take effect, the machine must be restarted. In some states of the machine, restarting with the [Power] button may not make the settings take effect. In this case, turn off the main power switch and then turn it on again.



OPERATION PANEL

Pressing the [Home Screen] key on the operation panel displays the home screen on the touch panel. The home screen displays the keys for selecting modes or functions.



(1) [Power] button

Use this button to turn the machine's power on and off.

(2) Main power indicator

This lamp lights up when the machine's main power switch is in the "I" position. While the light is blinking, the power cannot be turned on by pressing the [Power] button.

(3) [Power Save] button/indicator

Use this button to set the machine to Sleep Mode for energy saving. [Power Save] button blinks when the machine is in Sleep Mode.

(4) Touch Panel

Messages and keys appear on the touch panel display. Operate the machine by directly tapping the displayed keys.

- (a) Tap a mode to change to that mode.
- (b) Display the machine's status other than the job using icons.
- (c) Display the job in progress or waiting with text or icon.
- (d) Select shortcut keys for modes or functions.
- (e) Switch the pages for displaying shortcut keys.
- (f) Display Toner Quantity.
- (g) Display Operation Guide.
- (h) Use these keys to select functions that make the machine easier to use.
- (i) Select functions that can be utilized in respective modes. Tap the tab, and the list of function keys is displayed.

(5) [Fiery/MFP Selector] button

The display on the operation panel of the machine can be switched between Fiery mode and MFP mode by pressing the [Fiery/MFP Selector] button.

(6) [Home Screen] key

Display the home screen.

(7) USB port (A type)

This is used to connect a USB device such as a USB memory device to the machine. Supports USB 2.0 (Hi-Speed).



Checking the management of a job / priority / canceling

To display the Job Management screen, tap the [Job Management] key in the home screen, or tap the [Job Management] key that appears in the upper right corner of each mode screen.



Check the job Management

- (1) Tap the tab of the mode you want to check.
Check copy jobs and print jobs on the [Print] tab.
- (2) Tap the [Job Queue] or [Complete] key.
- (3) Check the jobs in the list.
If you want to give a job priority or cancel a job, tap that job.
- (4) To give the job priority:
Tap [Change Job Priority], and tap a Change Priority key.
- To cancel the job:
Tap [Stop/Delete].
- (5) Tap the [Back] key to return to the original screen.

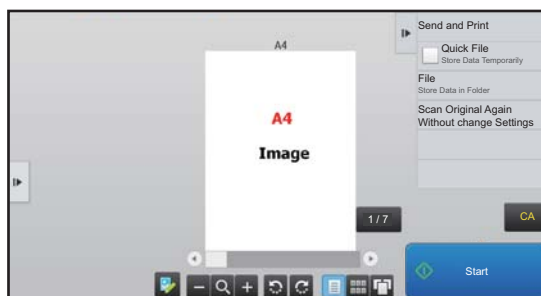
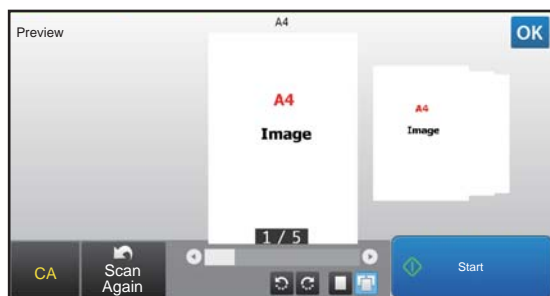
PREVIEW SCREEN

You can tap the [Preview] key to open the Preview screen.

In the Preview screen on the touch panel, you can view previews of jobs and images stored in the machine.

Easy mode

Normal mode



Keys used in the preview screen

	This changes the mode to edit mode. Pages of the original can be changed, rotated, or deleted.	*1	This rotates the preview image of whole page in the arrow's direction. The printing result is not rotated.
*1, *2	This reduces the image.	*1	This displays preview images of respective pages.
*1, *2	This displays the scroll bar for enlargement/reduction operations. Moving the slider to the left reduces the image, and moving the slider to the right enlarges the image.		This displays thumbnails of preview images.
*1, *2	This enlarges the image.	*1	This displays pages in a 3D view.

*1 Can also be used in easy mode.

*2 In Easy mode, this appears when you tap .



PLACING ORIGINALS

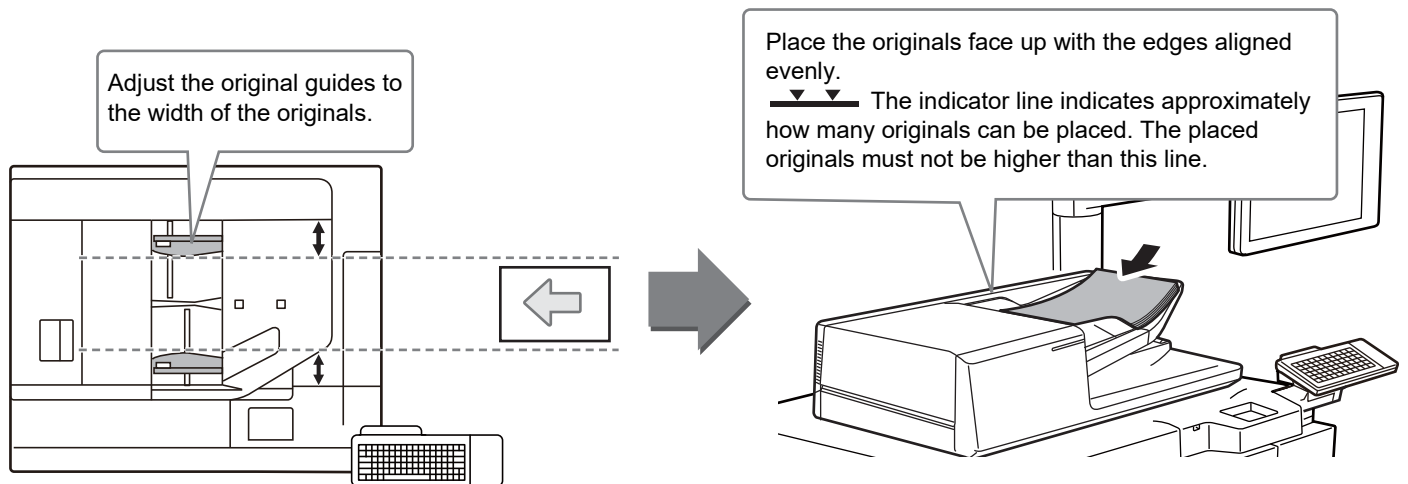
The automatic document feeder can be used to automatically scan many originals at once, and this saves you the trouble of manually feeding each original.

For originals that cannot be scanned using the automatic document feeder, such as a book or a document with notes attached, use the document glass.

USING THE AUTOMATIC DOCUMENT FEEDER

When using the automatic document feeder, place the originals in the document feeder tray.

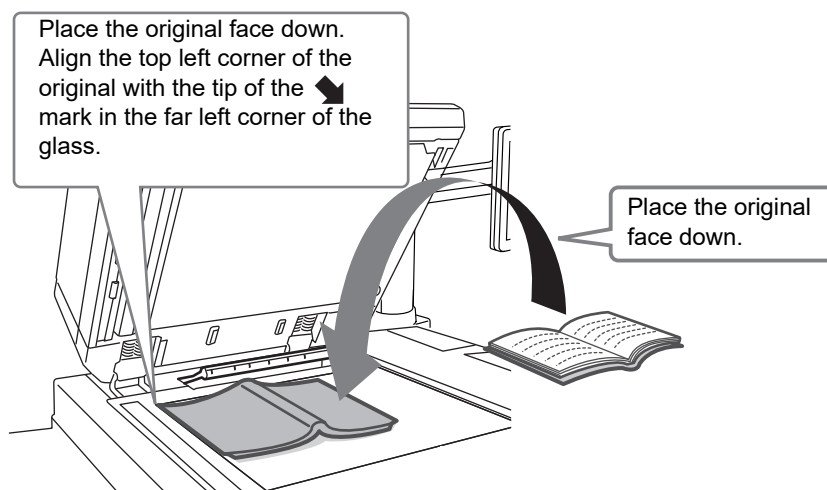
Make sure an original has not been placed on the document glass.



USING THE DOCUMENT GLASS

Take care that your fingers are not pinched when closing the automatic document feeder.

After placing the original, be sure to close the automatic document feeder. If left open, parts outside of the original will be copied black, causing excessive use of toner.



Set the orientation of the image to ensure that the orientation of the placed original is correctly recognized. For more information, see the User's Manual.

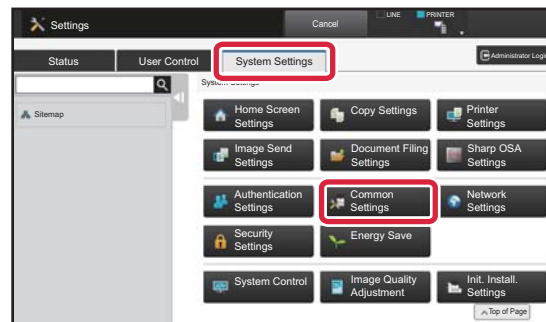
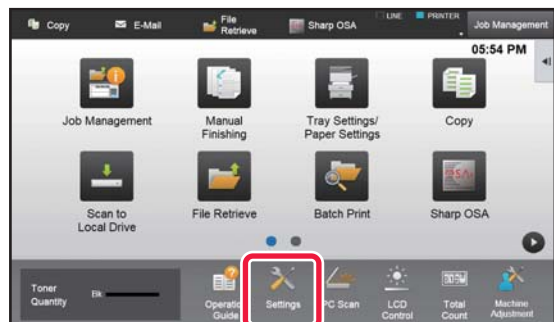


ADJUSTING THE VOLUME

You can adjust the volume of sounds generated by the machine. Tap the [Settings] key and configure the following settings from the [System Settings] tab.

(Administrator rights are required.)

▶ [Setting mode when an administrator is logged in \(page 62\)](#)



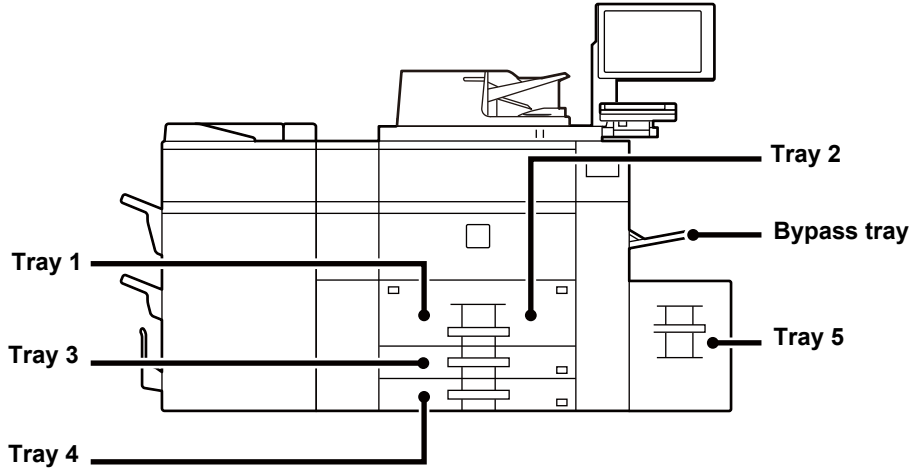
Setting	Settings
Sound Settings → Beep Sound Settings (Common) → Scan Complete Sound (Image Send)	Configure settings for the sound that is generated at the completion of scanning when using the scan, document filing or other image send function.
Sound Settings → Beep Sound Settings (Common) → Keys Touch Sound	Configure settings for the sound generated when a key is tapped, and whether a sound is generated when the key for a default setting is tapped.



LOADING PAPER

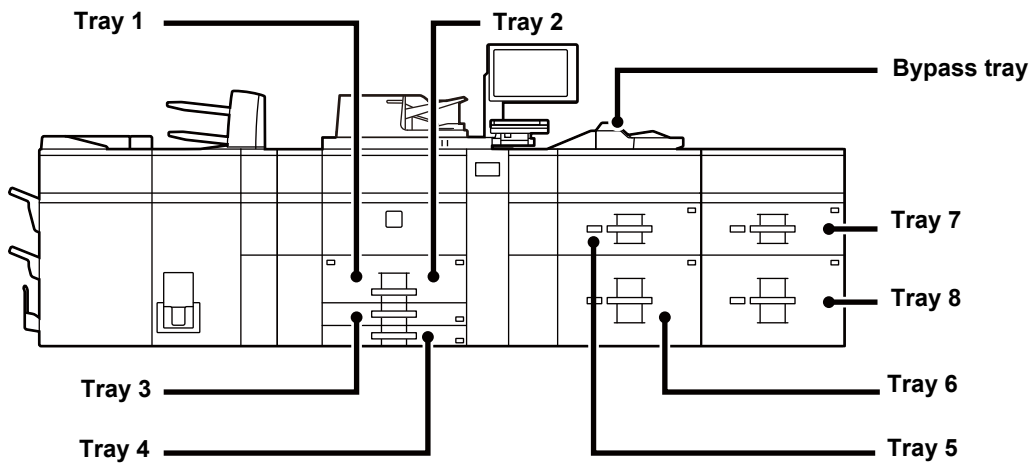
NAMES AND LOCATIONS OF TRAYS

The names of the trays are as follows.



Large capacity trays

Setting orientation of the print side



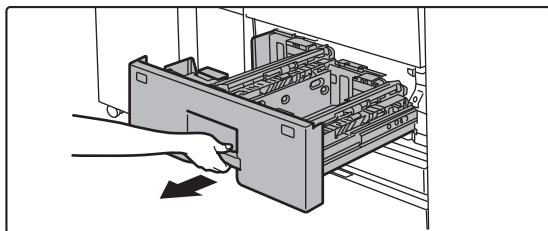
The setting orientation varies for the print side of paper, depending on the tray used. Place with the print side facing the direction indicated below.

Tray	Print side
Trays 1 - 4	Facing down
Bypass tray, Tray 5 - 8	Facing up



LOAD PAPER INTO THE TRAY 1/2

1



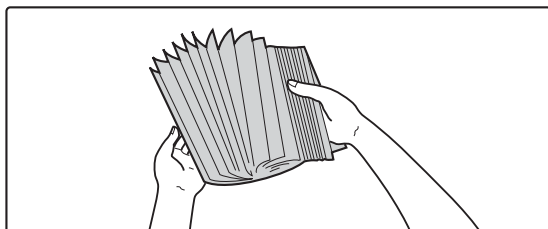
Pull out the paper tray.

Gently pull the tray out until it stops.



Keep holding the handle until the lock is released.

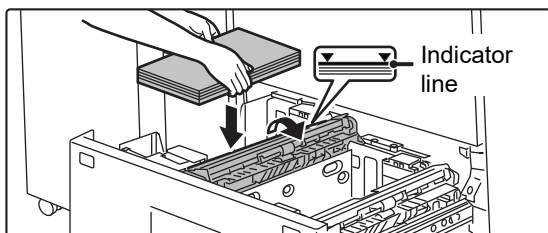
2



Fan the paper.

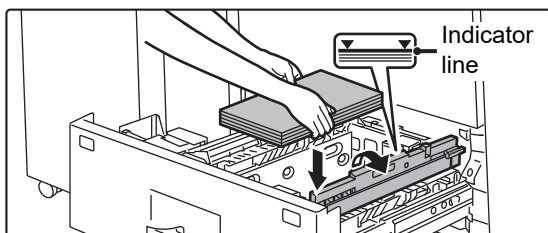
Fan the paper well before loading it. If the paper is not fanned, multiple sheets may feed at once and cause a misfeed.

3

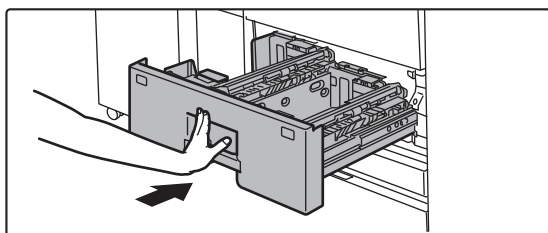


Lift the feed roller, and place paper into the tray.

Load the paper with the print side facing down. The stack must not be higher than the indicator line (maximum of 1200 sheets for tray 1, or maximum of 800 sheets for tray 2).



4



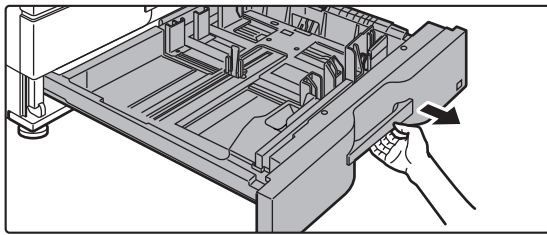
Lower the feed roller, and gently push the paper tray into the machine.

Push the tray firmly all the way into the machine slowly. Forcefully inserting the paper may cause skewed feeding and paper misfeeds.



LOAD PAPER INTO THE TRAY 3/4

1



Pull out the paper tray.

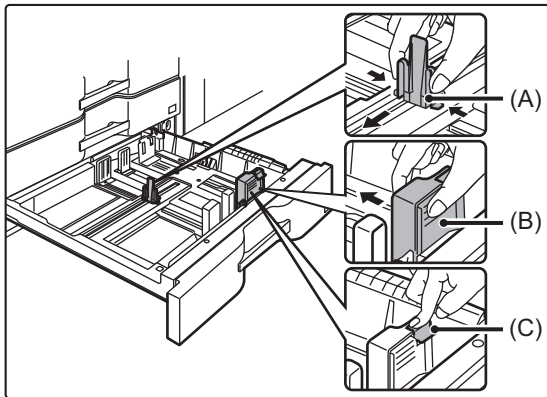
Gently pull the tray out until it stops.

To load paper, go to step 3. To load a different size of paper, go to the next step.



Keep holding the handle until the lock is released.

2



Adjust guide plates A and B by squeezing their lock levers and sliding them to match the longitudinal and transversal dimensions of the paper to be loaded.

(1) Squeeze the lock knob on guide plate A and slide to the desired paper size.

(2) Squeeze the lock knob on guide plate B and slide to the desired paper size.

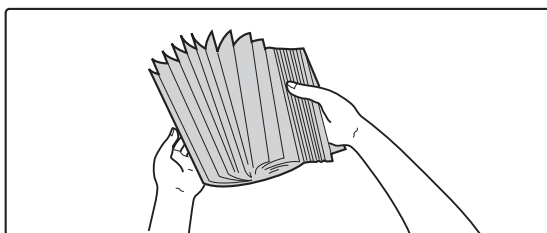
If slid to a standard paper size, guide plate B will lock automatically.

(3) For a non-standard paper size, after sliding guide plate B to the desired size, press the lock button (C).



A non-standard size of paper can only be loaded in tray 4. A non-standard size of paper cannot be loaded in tray 3.

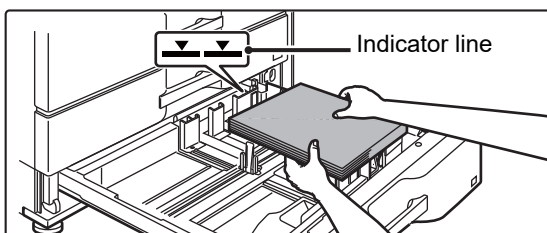
3



Fan the paper.

Fan the paper well before loading it. If the paper is not fanned, multiple sheets may feed at once and cause a misfeed.

4

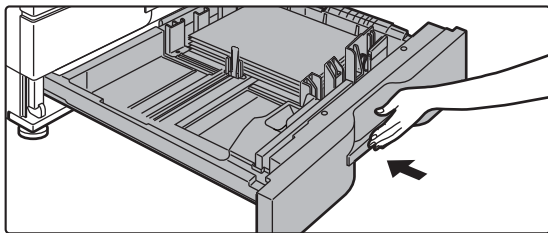


Insert the paper into the tray.

Load the paper with the print side facing down. The stack must not be higher than the indicator line (maximum of 500 sheets).



5



Gently push the paper tray into the machine.

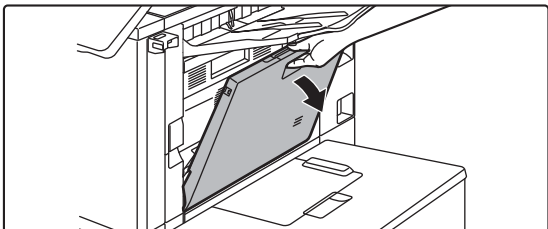
Push the tray firmly all the way into the machine slowly. Forcefully inserting the paper may cause skewed feeding and paper misfeeds.

LOADING PAPER IN OTHER TRAYS

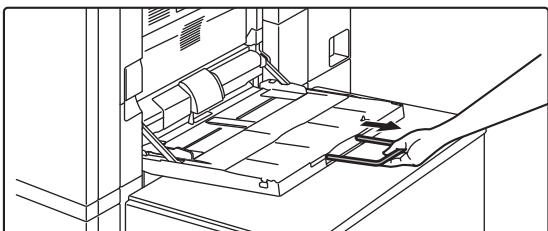
Bypass tray (on the machine)



1

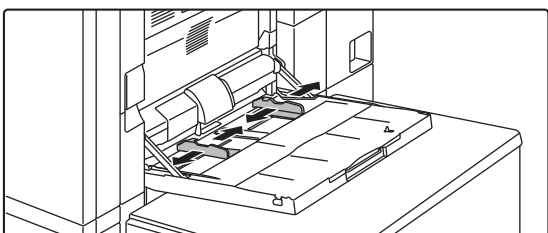


Open the bypass tray.



When loading paper larger than 8-1/2" × 11"R or A4R, pull out the extension guide. Pull the bypass tray extension all the way out.

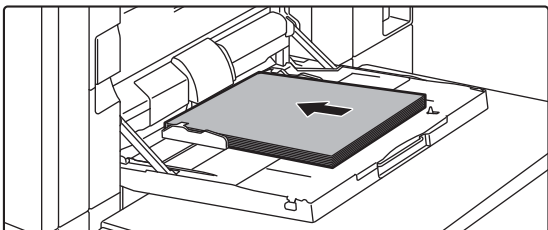
2



Adjust the bypass tray guides to the size of paper to be loaded.

Adjust the bypass tray guides so that they slightly contact the loaded paper.

3



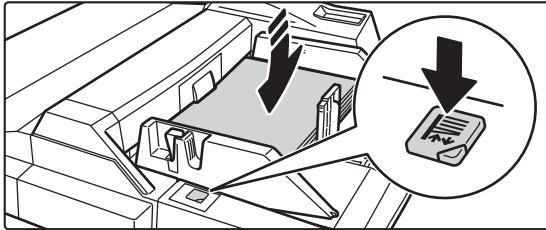
Load the paper with the print side facing up.

Insert the paper along the bypass tray guides all the way into the bypass tray until it stops slowly. Inserting the paper with excessive force may cause the leading edge to fold back. Inserting the paper too loosely may cause skewed feeding or misfeeds.



Loading paper into the bypass tray (on the large capacity trays)

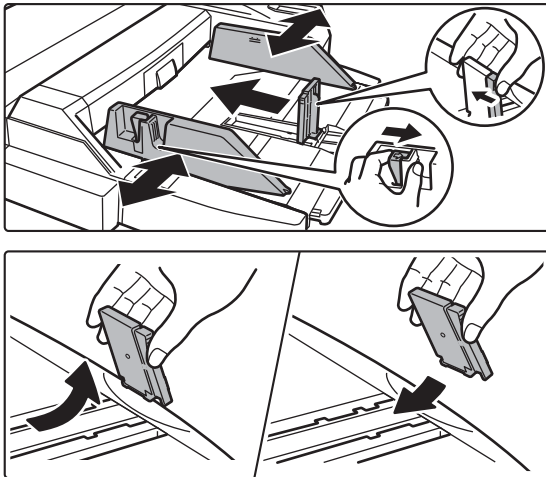
1



To replace the paper in the bypass tray, press the operation button and remove the paper.

The paper table goes down. The operation button blinks while the paper table goes down. The button lights up when the paper table has gone down. Do not remove the paper until the button ceases blinking.

2



Adjust the bypass tray guides to the size of paper to be loaded.

Grasp the guide lock lever to adjust the bypass tray guides to the paper size. Be sure to adjust the bypass tray guides at the rear end.

When loading paper larger than 8-1/2" x 11"R or A4R, be sure to pull out the bypass tray extension. Remove the bypass tray guide at the rear end and attach them to the inserter tray.

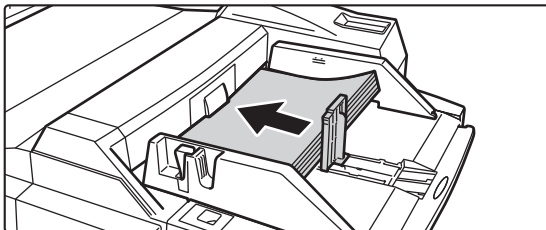


- Pull the bypass tray extension all the way out.
- When loading paper larger than 8-1/2" x 14", or A3W, remove the bypass tray guides at the rear end.



Do not place heavy objects on the bypass tray or press down on the tray.

3



Insert the paper along the bypass tray guides all the way into the bypass tray until it stops and adjust the right-side guide.

Load paper with the print side facing up.

The stack must not be higher than the indicator line.

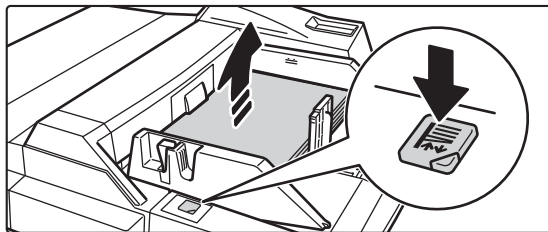
A maximum of 500 sheets of paper can be loaded into the tray.



- Do not force the paper in.
- If the bypass tray guides are set wider than the paper, move the bypass tray guides in until they correctly fit the width of the paper.
If the bypass guides are set too wide, the paper may skew or be creased.



4

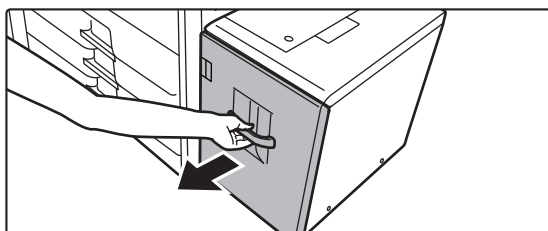


Press the operation button.

The paper table goes up. The operation button blinks while the paper table goes up. The button lights up when the paper table has gone up.

Large capacity tray (MX-LC12)

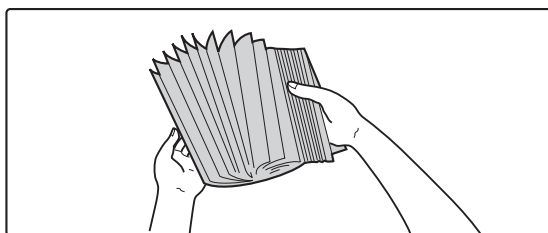
1



Pull out the paper tray.

Gently pull the tray out until it stops.

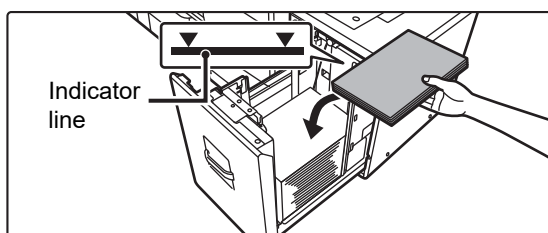
2



Fan the paper.

Fan the paper well before loading it. If the paper is not fanned, multiple sheets may feed at once and cause a misfeed.

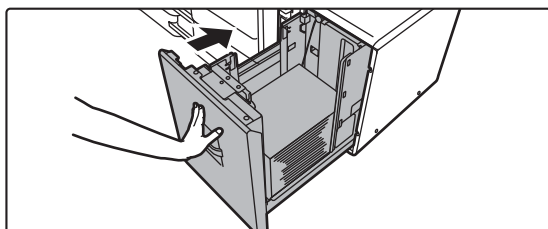
3



Place the paper in the center of the paper table.

Load the paper with the print side facing up. The stack must not be higher than the indicator line (maximum of 3500 sheets)

4



Gently push the paper tray into the machine.

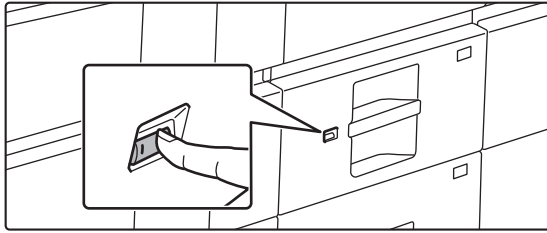
Push the tray firmly all the way into the machine slowly. Forcefully inserting the paper may cause skewed feeding and paper misfeeds.





Large capacity trays

1



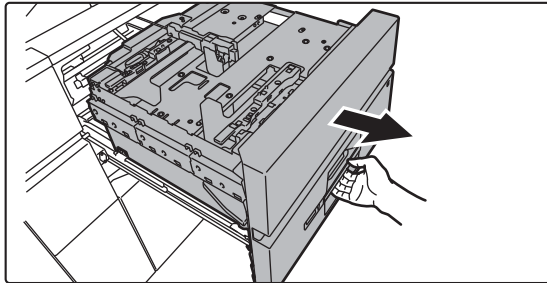
Press the operation button.

The operation button blinks, and the tray paper table goes down to the paper loading position. Wait until the operation button light goes off.



Do not pull out the tray until the light goes off. If you pull out the tray forcibly while the button lights up or blinks, a machine failure may be resulted.

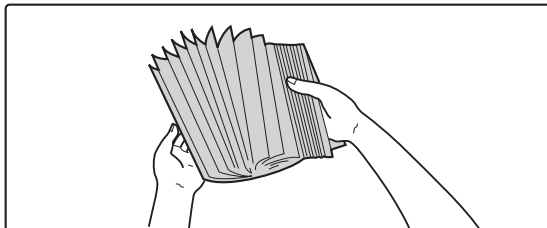
2



Pull out the paper tray.

Gently pull the tray out until it stops.

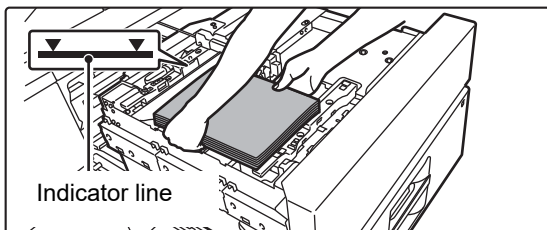
3



Fan the paper.

Fan the paper well before loading it. If the paper is not fanned, multiple sheets may feed at once and cause a misfeed.

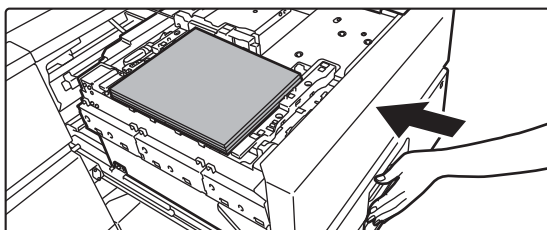
4



Load the paper.

Load the paper with the print side facing up. The stack must not be higher than the indicator line (maximum of 2500 sheets).

5



Gently push the paper tray into the machine.

Push the tray firmly all the way into the machine slowly. The paper table goes up after the tray is pushed in.

The operation button blinks while the paper table goes up. The button lights up when the paper table has gone up.



CHANGE THE SETTING OF THE PAPER TRAY

To change the paper loaded in the tray, change the machine's tray settings from [Tray Settings] in the home screen. As an example, the steps for changing the paper in tray 3 from A3 plain paper to B5 recycled paper are explained below.

1



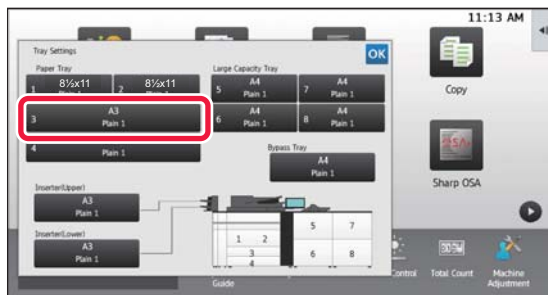
Press the [Home Screen] key.

Home screen appears.

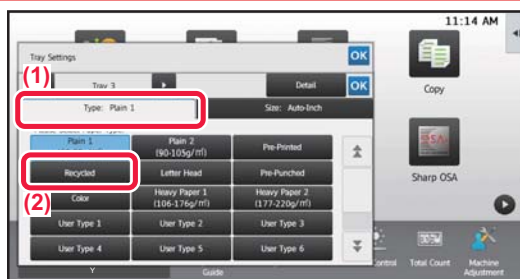
2



Tap the [Tray Settings/Paper Settings] key and tap the key of the paper tray 3.



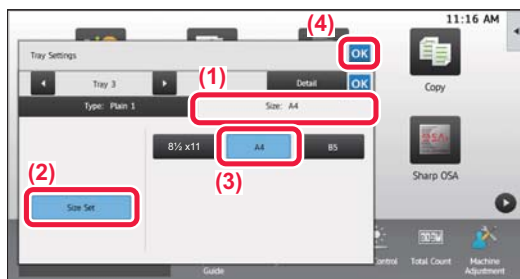
3



Set the paper type.

- (1) Tap the tab for the Paper Type.
- (2) Tap the [Recycled] key.

4



Set the paper size.

- (1) Tap the tab for the Paper Size.
- (2) Tap the [Size Set] key.
- (3) Tap the [B5] key.
- (4) Tap **OK** in "Tray Settings".



SAVING CONTACTS IN THE ADDRESS BOOK

"Contacts" and "Group" can be stored in the address book.

The procedure for adding a new contact to the address book by directly entering the name and address is explained here as an example.

1



Press the [Home Screen] key.

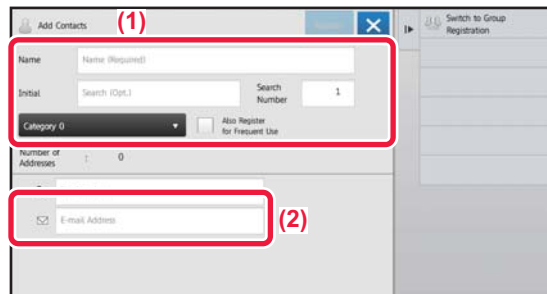
Home screen appears.

2



Tap the [Address Control] key.

3



Enter the information you want to register in the address book.

(1) Enter basic information.

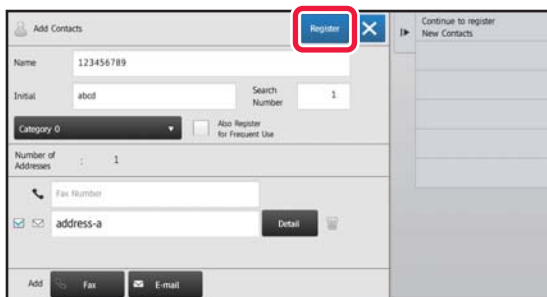
Be sure to enter [Name] and [Initial].

To specify a category, select one from a category list that appears when the entry box is tapped.

To register a contact for frequent use, select the [Also Register for Frequent Use] checkbox .

(2) Tap [E-mail Address], enter the address, and tap **OK**.


4

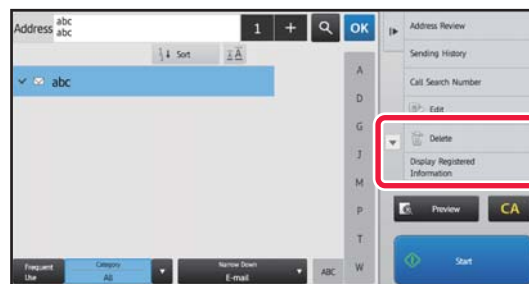
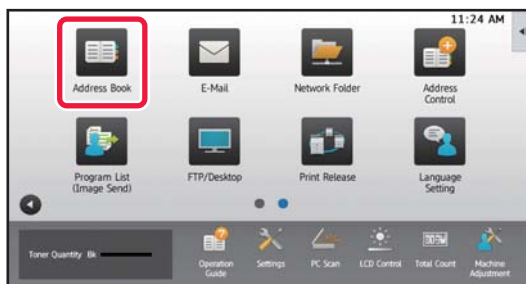


Tap the [Register] key.

The first address of each address type is set as the default address. If no address has the checkbox next to it selected, a confirmation screen will appear asking you if you want to select a default address.

Editing or deleting a contact

Tap the [Address Book] key in the home screen, select the contact to be edited or deleted, tap  in the action panel, and tap [Edit] or [Delete].





USER AUTHENTICATION

When user authentication is enabled in settings mode, you must log in in order to use the machine. User authentication is disabled in the factory default settings.

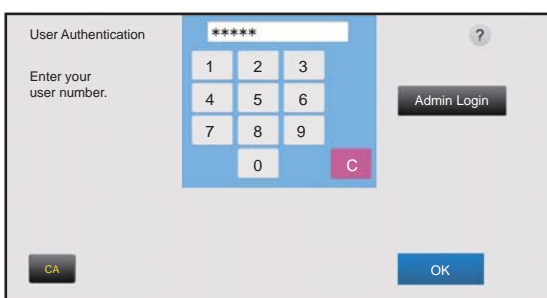
When you have finished using the machine, log out.

ABOUT AUTHENTICATION METHODS

There are three user authentication methods: authentication by user number, authentication by login name / password, and authentication by quick authentication. Ask the system administrator of the machine for the information you need to log in.

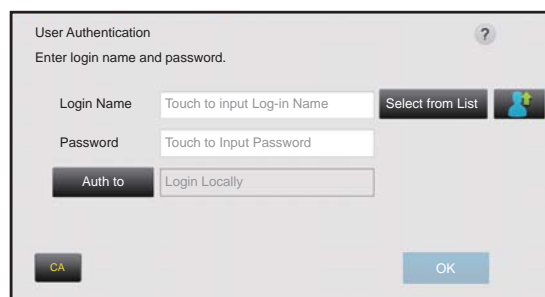
AUTHENTICATION BY USER NUMBER

The following procedure is used to log in using a user number received from the administrator of the machine. When starting the machine, the login screen appears.



AUTHENTICATION BY LOGIN NAME/PASSWORD

This method enables users to log in using a login name and password received from the administrator of the machine or the administrator of the LDAP server. When starting the machine, the login screen appears.



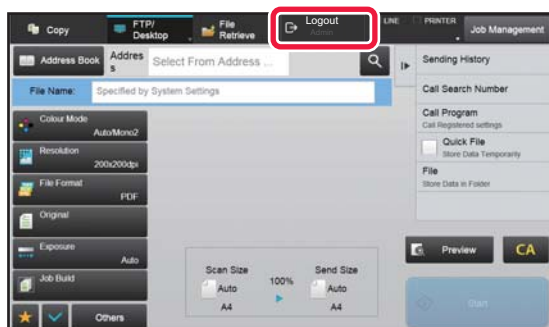
AUTHENTICATION BY QUICK AUTHENTICATION

This can only be used on the machine when carrying out user authentication. This method provides simple authentication for an administrator who has been previously registered on the machine.



Logout

When you have finished using the machine, log out. This helps prevent unauthorized people from using the machine.





FUNCTIONS THAT CAN BE USED ON THE MACHINE

The machine has many functions for a variety of purposes.

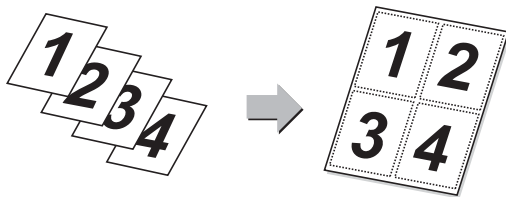
Some convenient functions are described in below. For more information, see the User's Manual.

PAPER, AND TIME SAVING FUNCTIONS

N-Up



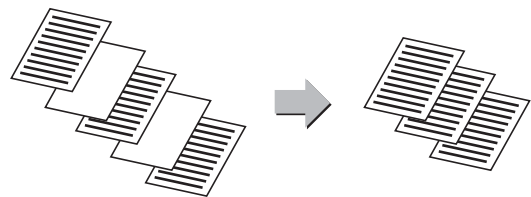
This function uniformly lays out multiple original pages onto a single sheet of paper. This function is convenient when you wish to present multiple pages in a compact format, or show a view of all pages in a document.



Blank Page Skip



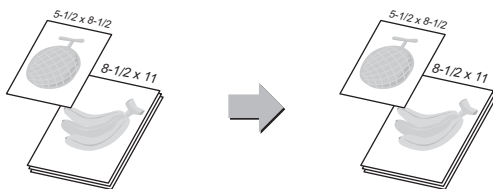
If the scanned original contains blank pages, this function skips them to copy or send only non-blank pages. The machine detects blank pages, enabling you to skip useless blank sheets without checking an original.



Mixed Size Original



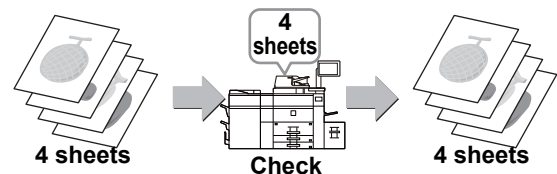
This feature scans originals in different sizes at the same time even when 5-1/2" x 8-1/2" (B5) size originals are mixed with 8-1/2" x 11" (A4) size originals. When copying, you can combine the mixed originals setting and auto ratio setting to change the ratio used for each original and print all pages on the same size of paper.



Original Count



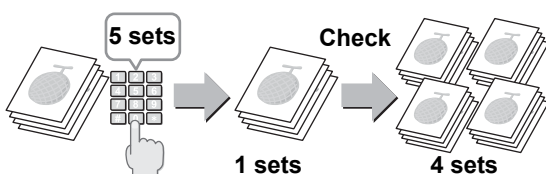
Counting the number of scanned original sheets and display the count before transmission. Checking the number of scanned original sheets before transmission helps prevent mistakes.



Proof Copy



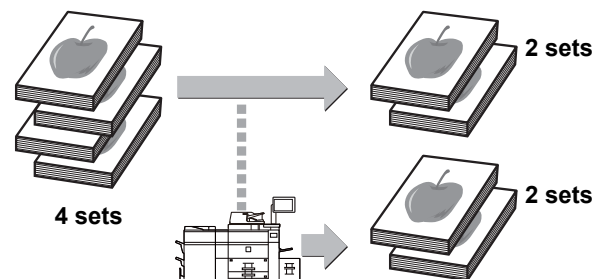
This function makes a proof copy before printing the specified number of copies. Check the preview image with a proof copy. If necessary, change the setting. Using this function stores the scanned original in the machine, saving you the trouble of re-scanning the original in the changed setting.



Tandem Copy



This function shares a copy job half-and-half between two machines connected to the network, enabling the reduction of the copy time.

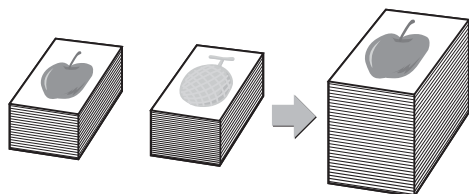




Job Build



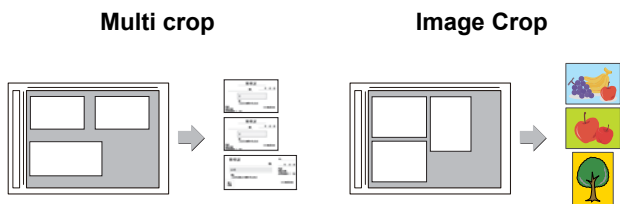
This function divides the originals into sets and feeds each set through the automatic document feeder one set at a time when copying or sending a very large number of originals.



Multi-crop scan / Image Crop



You can place multiple documents such as receipts or photographs on the document glass, and automatically crop and save each document to a separate file during scanning.

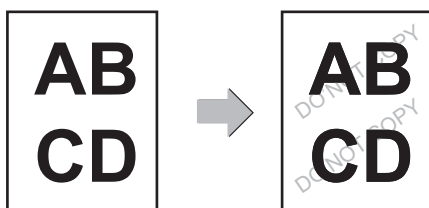


SECURITY REINFORCEMENT FUNCTIONS

Hidden Pattern Print



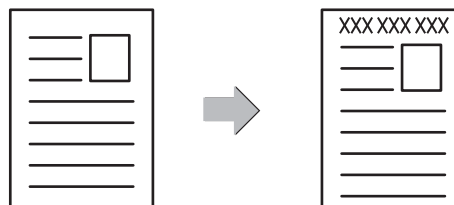
Characters to prevent unauthorized copying such as pre-set or customized text are placed as invisible characters in a background pattern. When an output sheet with a pattern print is copied, the hidden characters will appear.



Tracking Information Print



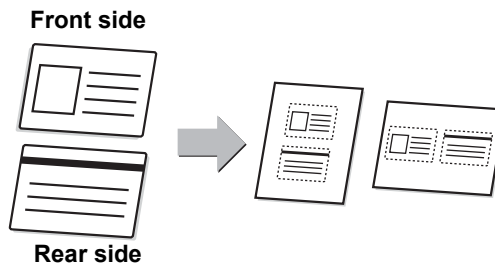
This function forcibly prints the pre-specified traceable information to prevent an unauthorized copy.



Card Shot



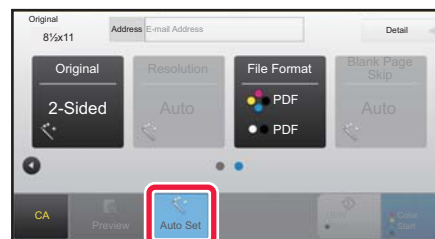
This function copies or sends the front and reverse sides of a card on one sheet, not on separate sheets. This function is convenient for making copies for identification purposes and helping save paper.



Auto Set



To automatically set scan settings appropriate for the original, tap the [Auto Set] key in the base screen of Easy Mode. Image Orientation*, Resolution, and Blank Page Skip, Duplex Setup, PDF Skew Adjustment, Automatically Detect Mono2/Grayscale are set automatically



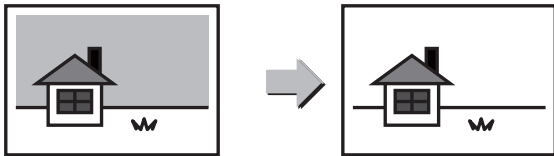


SCANNING FUNCTIONS

Background Adjustment



You can adjust the background by making light areas of the original darker or lighter.

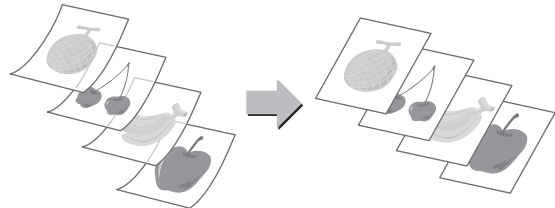


Slow Scan Mode/ Heavy Paper Scan

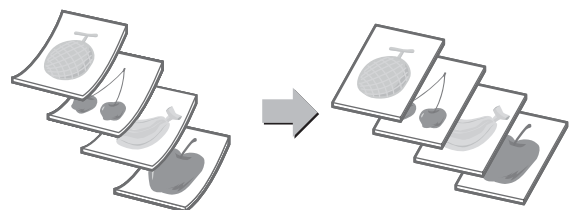


Use this function when you wish to scan thin originals or heavy paper originals using the automatic document feeder. This function helps prevent originals from misfeeding.

Slow Scan Mode



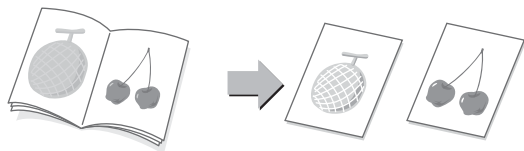
Heavy Paper Scan



Dual Page Scan



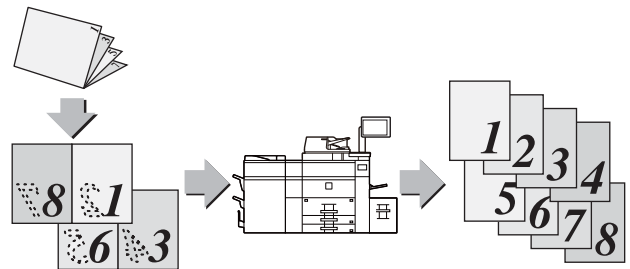
The left and right sides of an original can be transmitted as two separate pages. This function is useful when you wish to scan the left and right pages of a book or other bound document as separate pages.



Book Divide



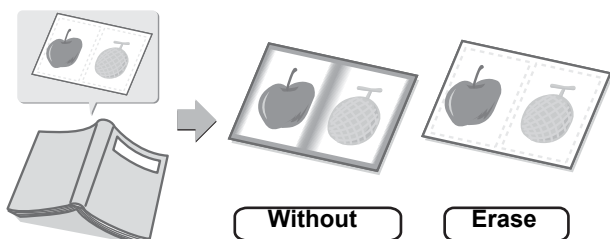
This function splits a saddle-stitch original such as a catalogue or a pamphlet page by page, and copies in sequence.



Erase



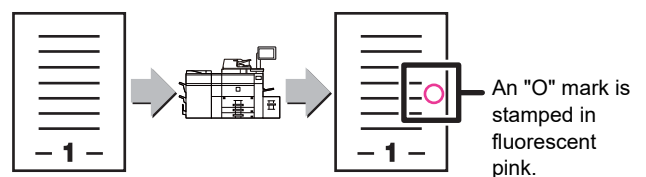
The erase function is used to erase shadows on images produced when scanning thick originals or books.



Verification Stamp



This function stamps each original that is scanned using the automatic document feeder, allowing you to verify that all originals were correctly scanned.





COPIER

This section explains the basic procedures for using the copier function.

▶ MAKING COPIES	32
▶ COPY MODE	34
▶ COPYING ON SPECIAL PAPER (Bypass Copy)	35



MAKING COPIES

This section explains how to set a Copy Ratio.

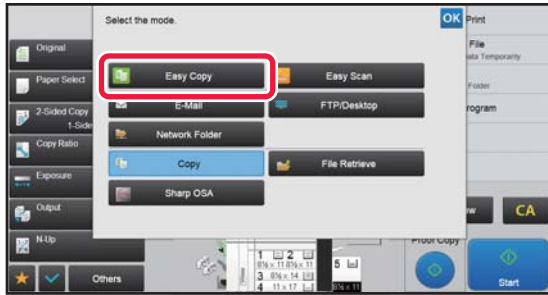
1



Press the [Copy] key and tap the key that shows .

Mode select screen appears.

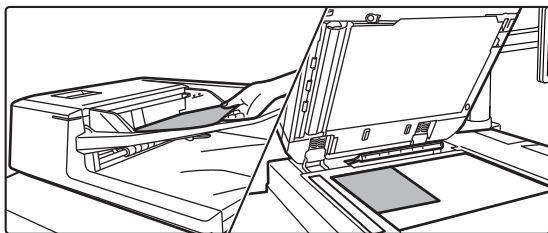
2



Tap the [Easy Copy] mode icon.

Easy Copy mode screen appears.

3



Place the original.

Place the original in the document feeder tray of the automatic document feeder, or on the document glass.

▶ [PLACING ORIGINALS \(page 16\)](#)

4



Tap the [Copy Ratio] key.

The functions below can be enabled in easy mode.

- Paper Select
- 2-Sided Copy
- Copy Ratio
- Staple*1, Staple / Punch*2
- Original
- Exposure
- N-Up
- Card Shot

*1 When a finisher, finisher (large stacker), saddle stitch finisher or saddle stitch finisher (large stacker) is installed.

*2 When a punch module, finisher, finisher (large stacker), saddle stitch finisher or saddle stitch finisher (large stacker) is installed.

To select more detailed settings, tap the [Detail] key and select settings in normal mode.

▶ [COPY MODE \(page 34\)](#)



5



Set the copy ratio.

After the settings are completed, tap **OK**.

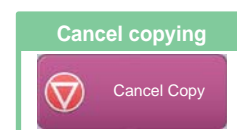
6



Set the number of copies and then tap.

To check a preview of a document, tap the [Preview] key.

► [PREVIEW SCREEN \(page 15\)](#)



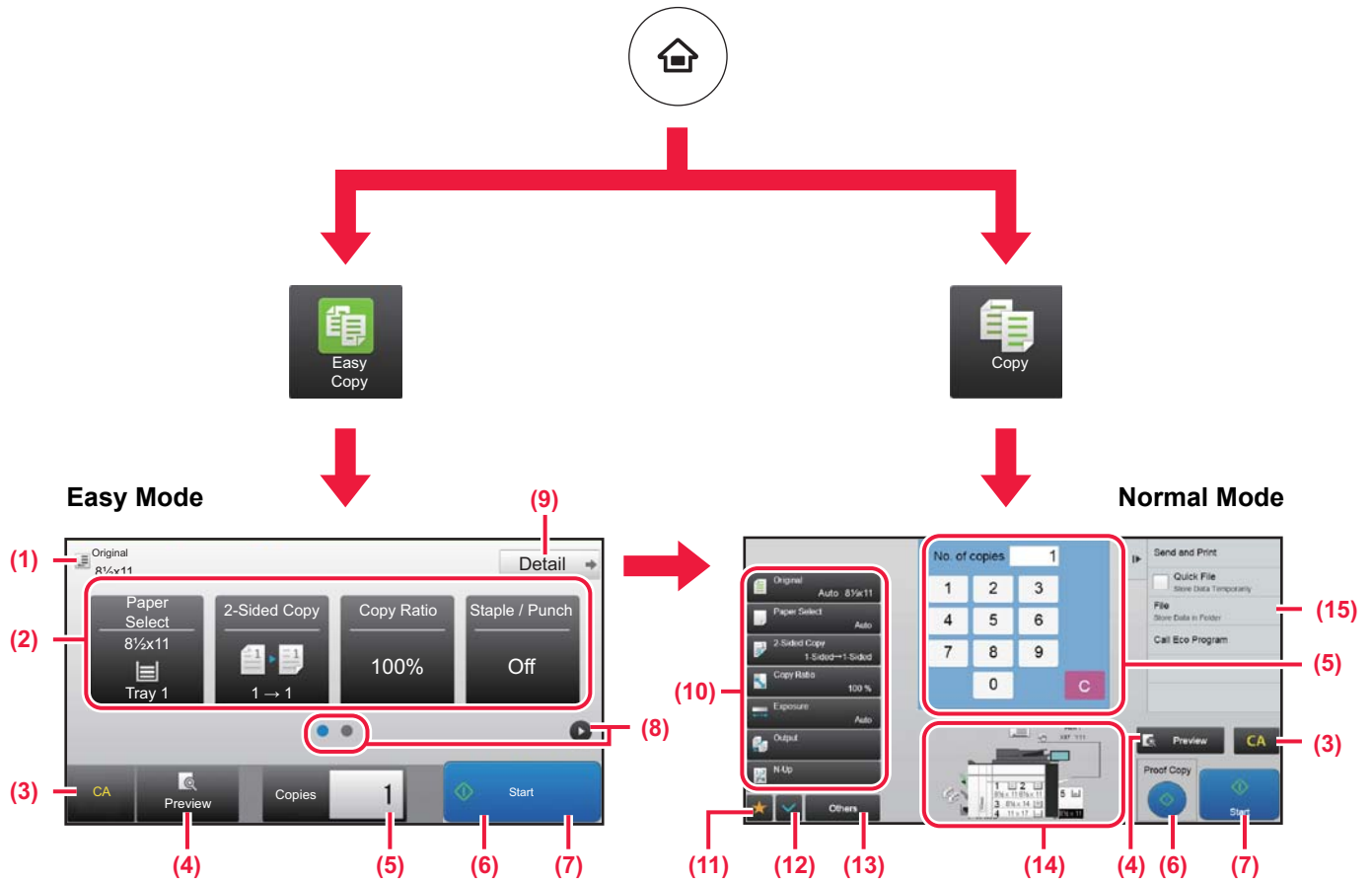


COPY MODE

Copy mode has two modes: easy mode and normal mode.

Easy mode is limited to frequently used functions that allow you to smoothly perform most copy jobs.

If you need to select detailed settings or special functions, use normal mode. All functions can be used in normal mode.



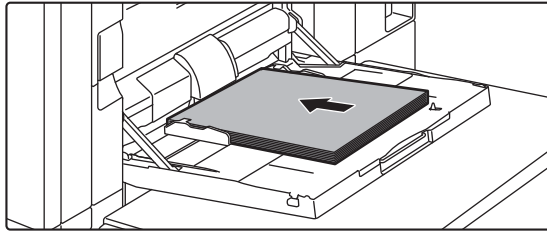
- (1) Show the size of the placed original.
- (2) Select the function that you want to use.
- (3) All settings are reset.
- (4) Scan the original and show a preview image.
 - ▶ [PREVIEW SCREEN \(page 15\)](#)
- (5) Enter the number of copies.
- (6) Starts Proof copying.
- (7) Starts copying.
- (8) Switch the pages for displaying shortcut keys.
- (9) Change to normal mode.
- (10) Setting keys that can be used to make copies.
- (11) Displays the list of function keys. Frequently used [Others] can be registered.
- (12) Check the current settings.
- (13) Displays the list of keys other than the function keys indicated above.
 - ▶ [FUNCTIONS THAT CAN BE USED ON THE MACHINE \(page 28\)](#)
- (14) Indicates the presence or absence of an original and size of paper loaded in each tray. Tapping this makes the paper select screen opened.
- (15) Displays the functions that can be utilized in the Copy Mode.



COPYING ON SPECIAL PAPER (Bypass Copy)

This section explains how to load 8-1/2" x 11" heavy paper in the bypass tray.

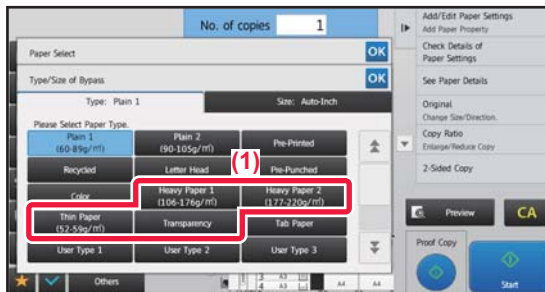
1



Load paper into the bypass tray.

▶ [Bypass tray \(on the machine\) \(page 21\)](#)

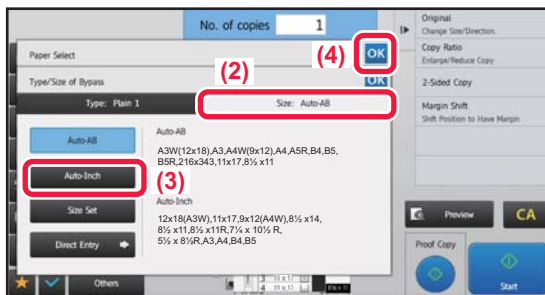
2



Select settings in the touch panel.

(1) Tap the [Heavy Paper 1], [Heavy Paper 2], [Heavy Paper 3] or [Heavy Paper 4] key.

Tap the [Heavy Paper 1] key if the paper is 28 lbs. bond to 65 lbs. cover (106 g/m² to 176 g/m²), the [Heavy Paper 2] key if the paper is 65 lbs. cover to 80 lbs. cover (177 g/m² to 220 g/m²), the [Heavy Paper 3] key if the paper is 80 lbs. index to 140 lbs. index (221 g/m² to 256 g/m²), or the [Heavy Paper 4] key if the paper is 140 lbs. index to 110 lbs. cover (257 g/m² to 300 g/m²).

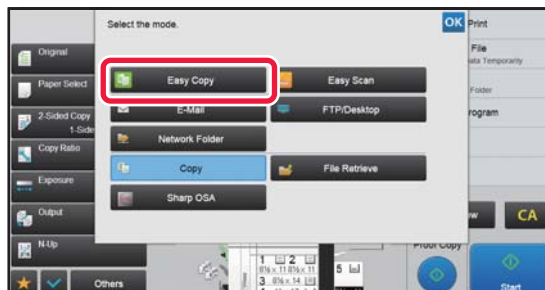


(2) Tap the [Size: Auto-Inch] tab.

(3) Tap the [Auto-Inch] key.

(4) Tap **OK** of "Tray Settings".

3



Tap the [Easy Copy] mode icon.

Easy Copy mode screen appears.

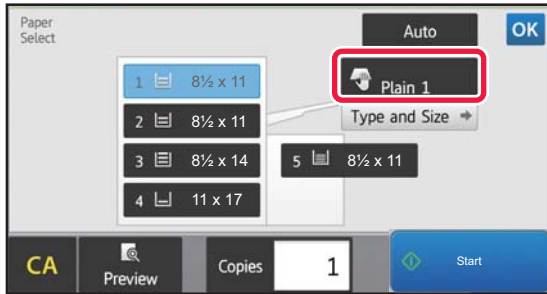


4



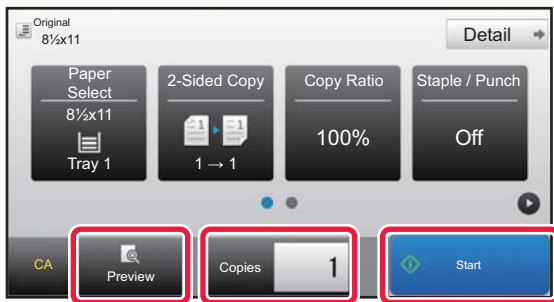
Tap the [Paper Select] Key.

5



Select the Bypass Tray.

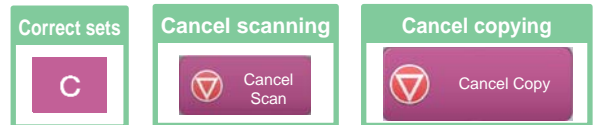
6



Set the number of copies and then tap the [Start] key.

To check a preview of a document, tap the [Preview] key.

▶ [PREVIEW SCREEN \(page 15\)](#)





PRINTER

This section explains the basic procedure for printing using the printer driver of the machine. The explanations of screens and procedures are primarily for Windows® 10 in Windows® environments, and macOS 10.12 in macOS environments. The window varies depending on the operating system version, the printer driver version, and the application.

▶ PRINTING IN A WINDOWS ENVIRONMENT	38
▶ PRINTING IN A macOS ENVIRONMENT	40
▶ DIRECTLY PRINTING A FILE IN USB MEMORY.....	42



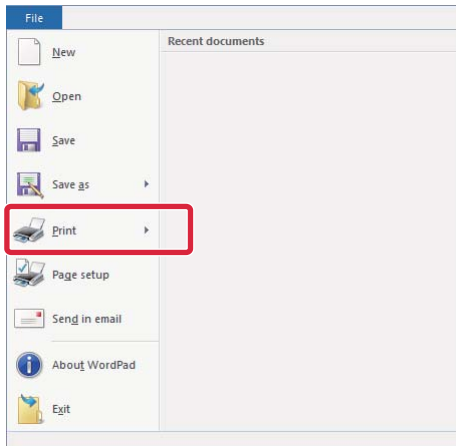
PRINTING IN A WINDOWS ENVIRONMENT

The following example explains how to print an A4 size document from "WordPad", which is a standard accessory program in Windows.

To install the printer driver and configure settings in a Windows environment, see the Software Setup Guide.

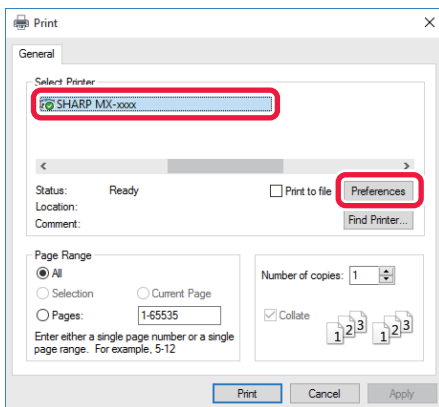
For information on the available printer drivers and the requirements for their use, see the User's Manual.

1



Select [Print] from the [File] menu of WordPad.

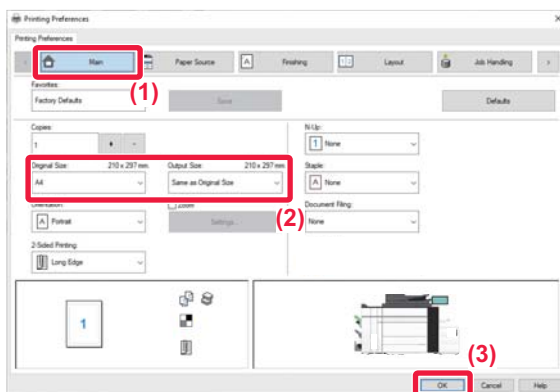
2



Select the machine's printer driver, and click the [Preferences] button.

If the printer drivers appear as a list, select the name of the printer driver to be used from the list.

3



Select print settings.

(1) Click the [Main] tab.

(2) Select the original size.

To select settings on other tabs, click the desired tab and then select the settings.

(3) Click the [OK] button.

- Help can be displayed for a setting by clicking the setting and pressing the [F1] key.
- Click the [Help] button, the Help window will open to let you view explanations of the settings on the tab.



4**Click the [Print] button.**

Printing begins.



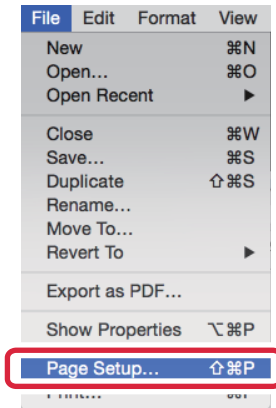


PRINTING IN A macOS ENVIRONMENT

The following example explains how to print an A4 size document from "TextEdit", which is a standard accessory program in macOS.

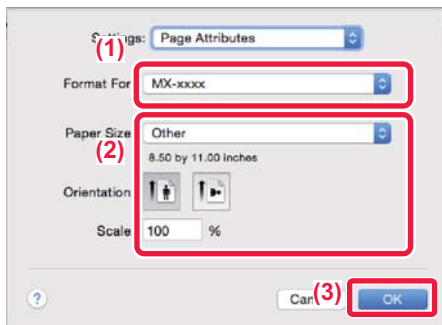
To install the printer driver and configure settings in a macOS environment, see the Software Setup Guide.

1



Select [Page Setup] from the [File] menu.

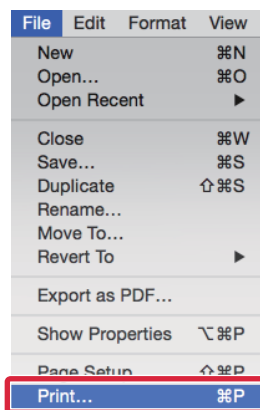
2



Select paper settings.

- (1) Make sure that the correct printer is selected.
- (2) Select the paper settings.
Set the paper size, paper orientation, and copy ratio.
- (3) Click the [OK] button.

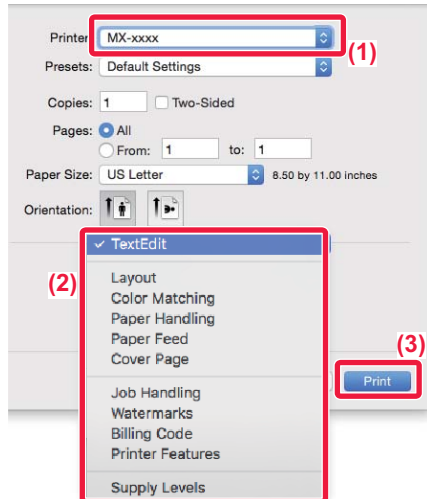
3



Select [Print] from the [File] menu.



4



Select print settings.

- (1) Make sure that the correct printer is selected.
- (2) Select items from the menu and configure the settings as needed.
- (3) Click the [Print] button.



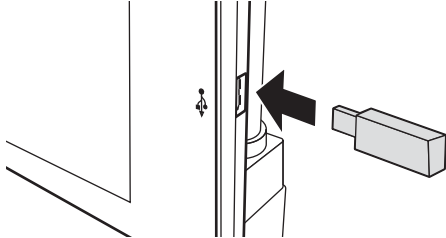


DIRECTLY PRINTING A FILE IN USB MEMORY

Files in a USB memory device connected to the machine are printed from the operation panel of the machine without using the printer driver. The file types (and corresponding extensions) that can be printed directly are shown below.

File Type	TIFF	JPEG	PCL	PDF, EncryptedPDF, Compact PDF, PDF/A, Compact PDF/A	PS	DOCX, XLSX, PPTX	PNG
Extension	tiff, tif	jpeg, jpg, jpe, jfif	pcl, prn	pdf	ps, prn	docx, xlsx, pptx	png

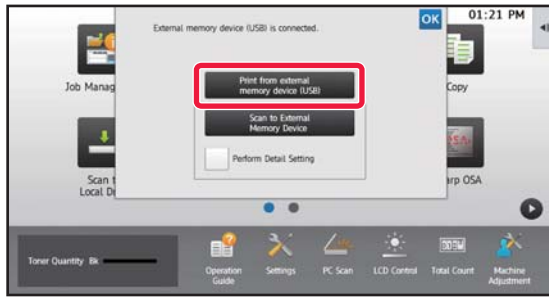
1



Connect the USB memory device to the machine.

- Use FAT32 or NTFS format for USB memory device.
- When the format of the USB memory device is FAT32, use a 32 GB or less USB memory device.

2

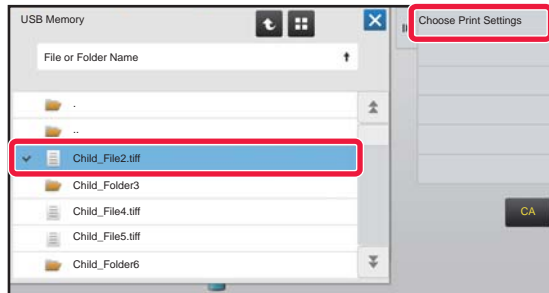


When a screen for selecting the action appears, tap [Print from external memory device (USB)].

If the screen does not appear, follow these steps:

- (1) Tap the [File Retrieve] key.
- (2) Tap [Select File from USB Memory to Print] on the action panel.

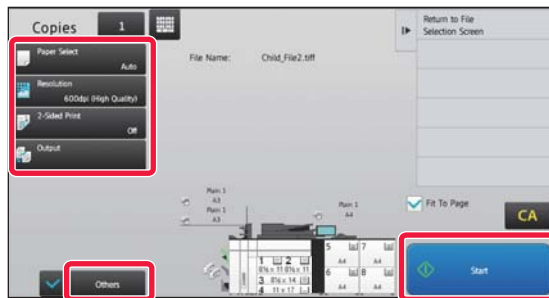
3



Tap the key of the file that you wish to print, and tap [Choose Print Settings] on the action panel.

- When printing multiple files, tap the keys of the files you wish to print, and tap [Print] on the action panel.
- Tap to switch to thumbnails.

4



Select print settings and tap the [Start] key.

5

Remove the USB memory device from the machine.

Qualcomm® DirectOffice™ is a product of Qualcomm Technologies, Inc. and/or its subsidiaries. Qualcomm® is a trademark of Qualcomm Incorporated, registered in the United States and other countries. DirectOffice™ is a trademark of CSR Imaging US, LP, registered in the United States and other countries.



SCANNER

This section explains the uses of the network scanner function and the basic procedure for using scan mode.

▶ NETWORK SCANNER FUNCTION.....	44
▶ SCANNING AN ORIGINAL.....	45
▶ SCANNER MODE	47



NETWORK SCANNER FUNCTION

The network scanner function of the machine can be used to transmit scanned images by a variety of methods. The network scanner function has the following modes. To use a mode, tap the button of the mode in the home screen.

Scan modes



To send an image to an e-mail address, use

Scan to E-mail



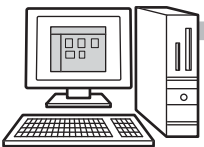
To upload an image to an FTP server, use

Scan to FTP



To send an image to a shared folder on your computer, use

Scan to Network Folder



To process an image in a specific application, use

Scan to Desktop



USB memory mode

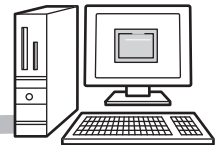
Use this mode to save an image to USB memory



Scan the original, and then...

PC scan mode

Use this mode to scan a photo while making corrections on your computer



A TWAIN-compliant software application can be used.

Data entry mode

If you want to use a document solution linked to an application



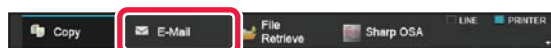


SCANNING AN ORIGINAL

The basic operation for scanning is explained below.

The procedure for sending a scanned file by E-mail to a destination stored in the address book is explained here.

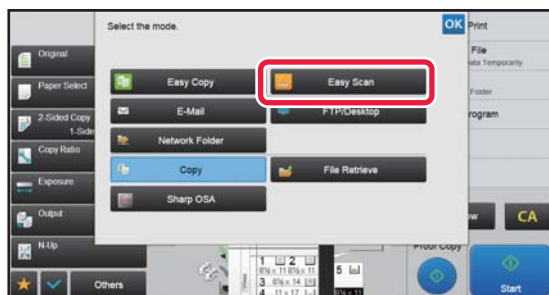
1



Press the [E-Mail] key and tap the key that shows .

Mode select screen appears.

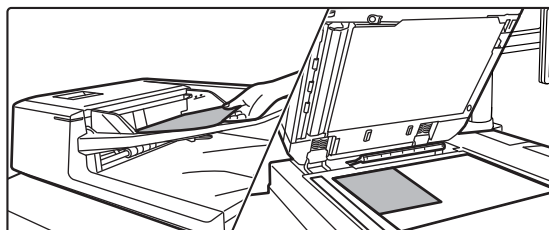
2



Tap the [Easy Scan] mode icon.

Easy Scan mode screen appears.

3

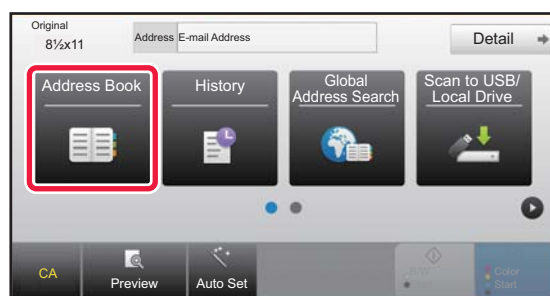


Place the original.

Place the original in the document feeder tray of the automatic document feeder, or on the document glass.

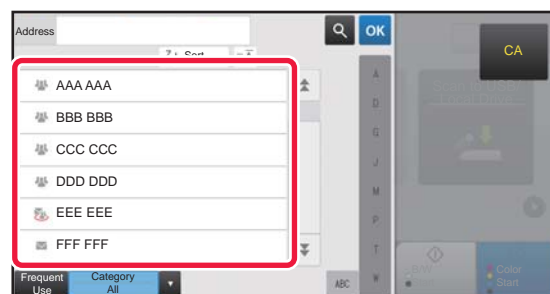
▶ [PLACING ORIGINALS \(page 16\)](#)

4



Tap the [Address Book] key.

5

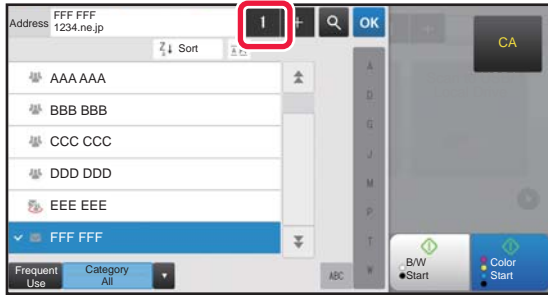


Tap the key of the desired destination.

Addresses of the current mode are selected from addresses whose checkboxes were selected when the tapped destination was registered. If no addresses were registered with the checkbox selected, tap the [Yes] key in the confirmation screen and select the desired addresses. To add another destination, tap the key of the destination.



6



Tap the [All Destinations] key.

A list of the selected destinations appears.

7



Confirm the destination.

If an incorrect destination appears in the list, tap the destination and then tap the [Delete] key.

8



Tap to change screens and select settings.

Change settings as needed.

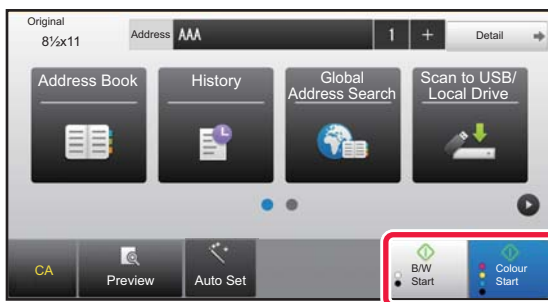
The functions below can be enabled in easy mode.

- Original
- Resolution
- File Format
- Blank Page Skip

To select more detailed settings, tap the [Detail] key and select settings in normal mode.

▶ [SCANNER MODE \(page 47\)](#)

9



Tap the [Colour Start] key or [B/W Start] key.

- In the factory default state, the machine detects whether the original is black & white or full color when you tap the [Colour Start] key, and automatically switches between full color and black & white binary scanning. When you tap the [B/W Start] key, the machine scans in black & white binary. For details, see the User's Manual.

- To check a preview of a document, tap the [Preview] key.

▶ [PREVIEW SCREEN \(page 15\)](#)

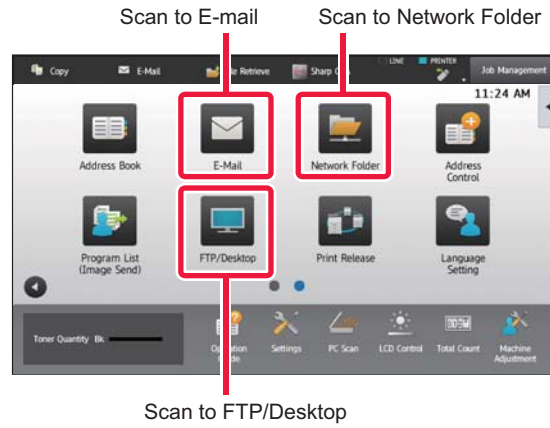
Cancel scanning



SCANNER MODE

SELECTING SCANNER MODE

In the home screen, tap the icon of the desired scanner mode to display the base screen of scanner mode.



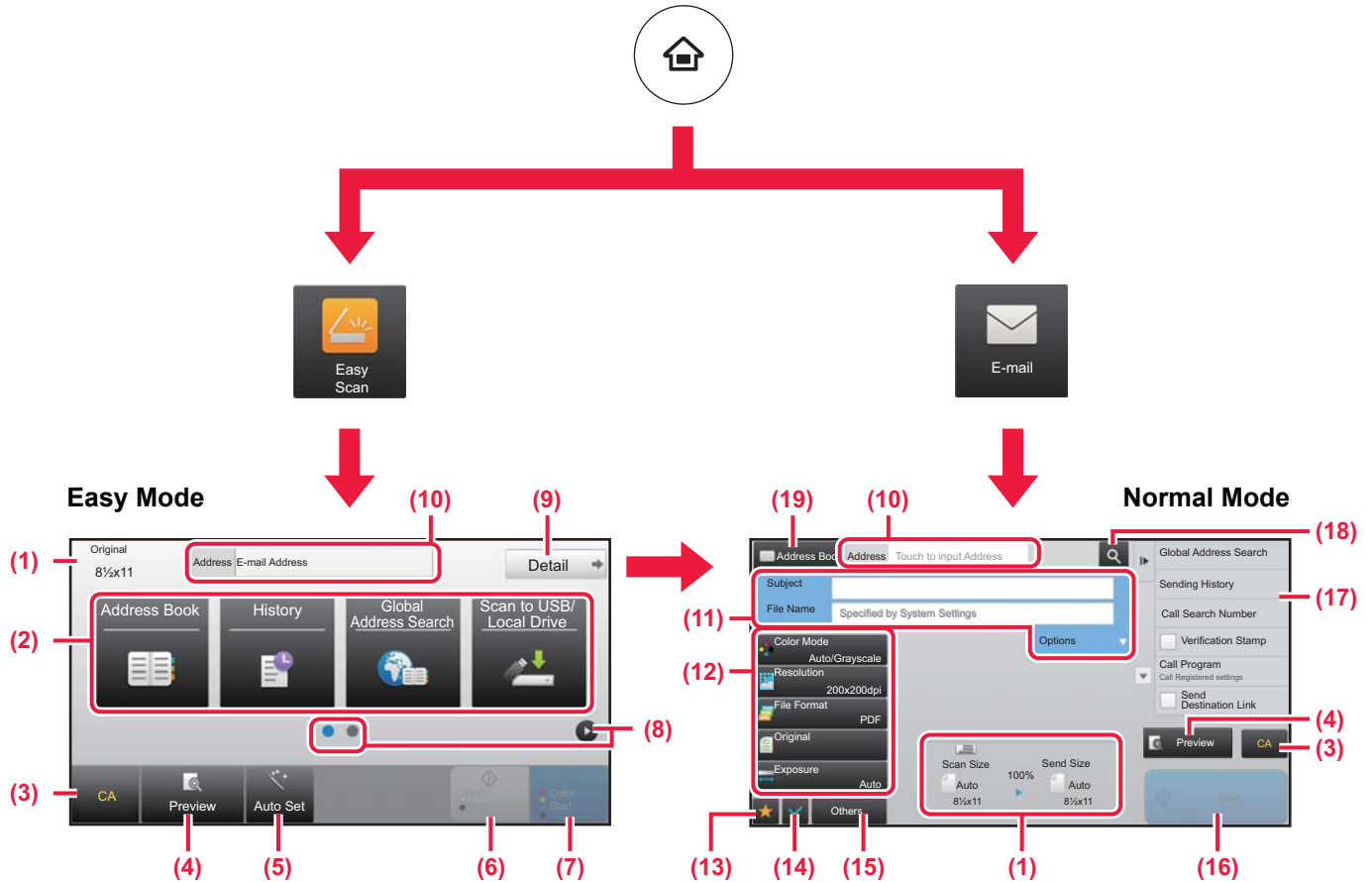


BASE SCREEN OF SCANNER MODE

Scanner mode has two modes: easy mode and normal mode.

Easy mode is limited to frequently used functions that allow you to smoothly perform most scan jobs.

If you need to select detailed settings or special functions, use normal mode.



- (1) Displays the sizes of the original and the data to send.
- (2) Select the address and functions you want to use.

To select a function in easy mode
 In "Settings", select [System Settings] → [Common Settings] → [Operation Settings] → [Easy Mode Settings] → [Easy Scan]

- (3) Reset settings and addresses.
- (4) Scan the original and show a preview image.
 ▶ [PREVIEW SCREEN \(page 15\)](#)
- (5) Automatically set the original placement orientation, resolution, and skipping of blank pages, Duplex Setup*, PDF Skew Adjustment, Automatically Detect Mono2/Grayscale.
 * On the MX-2651/3051/3551/4051/5051/6051, the OCR expansion kit is required.
- (6) Starts blank & white scanning.
- (7) Starts color scanning.
- (8) Switch the pages for displaying shortcut keys.

- (9) Change to normal mode.
- (10) Tap this key to display the soft keyboard.
- (11) Enter the subject, file name, and other items. The screen varies depending on the scanning type.
- (12) Setting keys that can be used for sending images.
- (13) Displays the list of function keys. Frequently used [Others] can be registered.
- (14) Checking the current settings.
- (15) Displays the list of keys other than the function keys indicated above.
 ▶ [FUNCTIONS THAT CAN BE USED ON THE MACHINE \(page 28\)](#)
- (16) Transmission will start.
- (17) Displays the functions that can be utilized in the Image Send mode.
- (18) Searches for the address.
- (19) Displays the address book.



DOCUMENT FILING

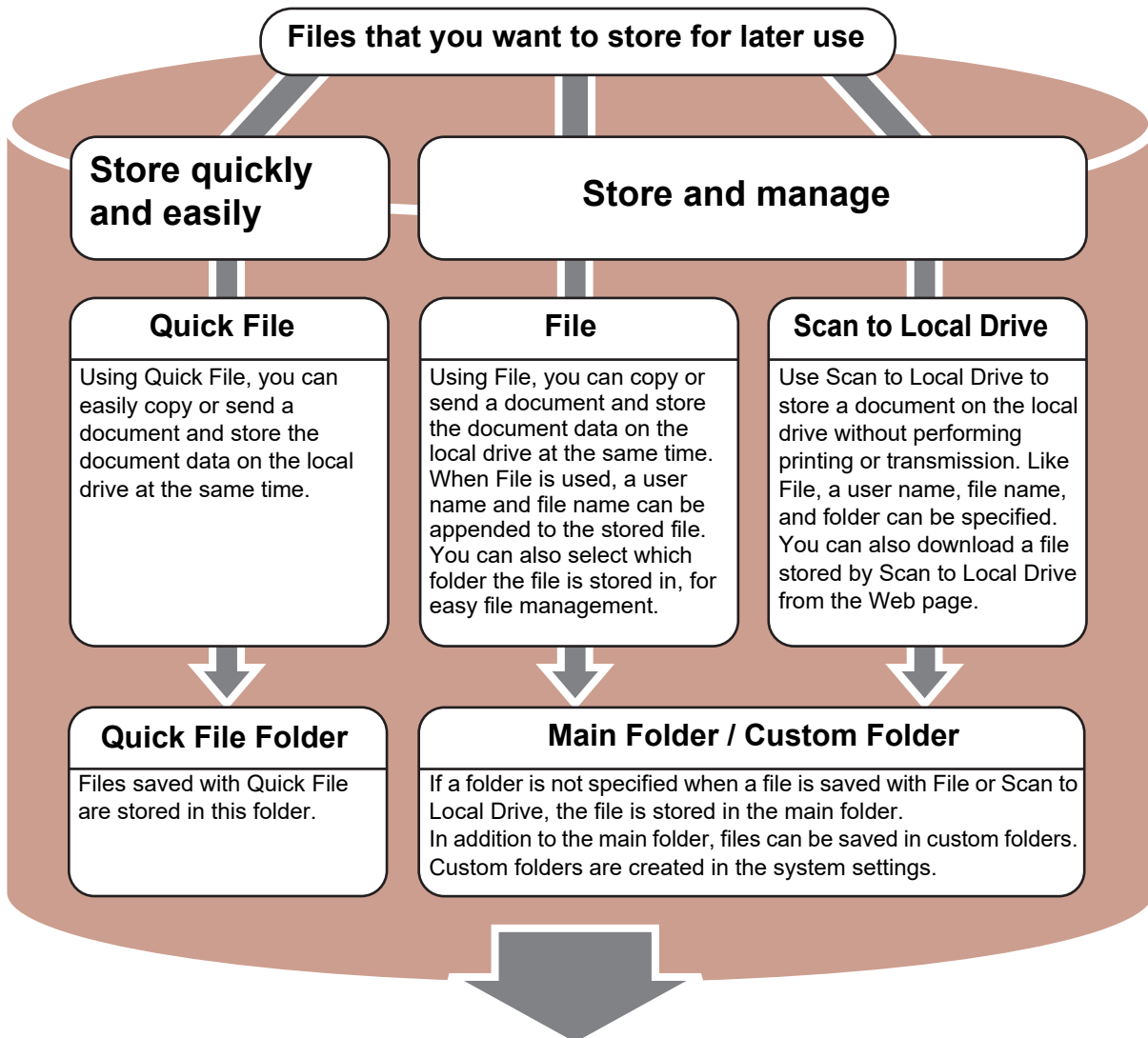
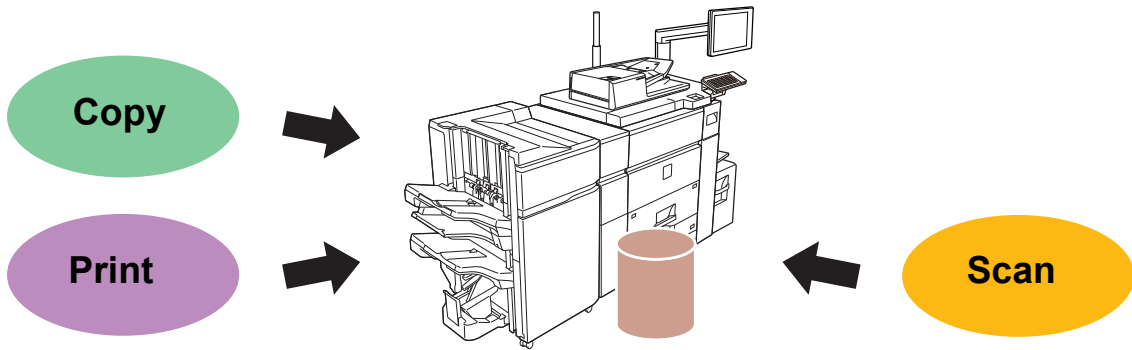
The document filing function is used to store the document or print image on the local drive when performing a copy, print, or other job. You can print or perform other operations using the saved file at a later time.

This section introduces several of the document filing functions.

▶ USES OF THE DOCUMENT FILING FUNCTION	50
▶ SAVING A DOCUMENT ONLY (Scan to Local Drive).....	51
▶ PRINTING A SAVED FILE.....	54



USES OF THE DOCUMENT FILING FUNCTION



**Stored files can be printed or transmitted whenever needed.
 A file that has been stored by the printer driver cannot be transmitted.
 (The file can be transmitted if "RIP format" is changed to "RGB" format.)**



SAVING A DOCUMENT ONLY (Scan to Local Drive)

Scan to Local Drive lets you save a scanned document to the main folder or a custom folder. This function is not used to print or send.

The procedure for storing a document in the main folder is explained below.

To save to a custom folder, tap the [File retrieve] key in the Home screen, tap [Scan to Local Drive] on the action panel, and select save settings. For more information, see the User's Manual.

Saving by Easy Scan

You can save a file in the main folder or My Folder (when user authentication is enabled).

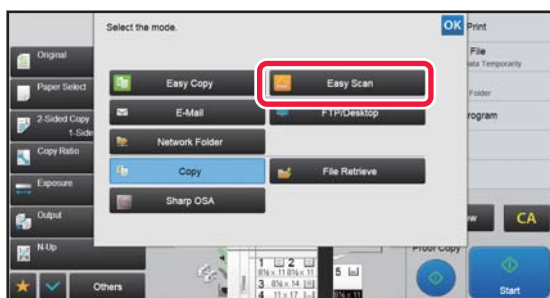
1



Press the [File Retrieve] key and tap the key that shows .

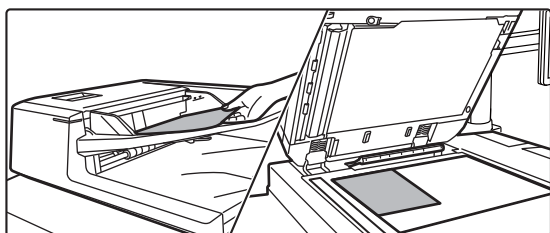
Mode select screen appears.

2



Tap the [Easy Scan] mode icon.

3

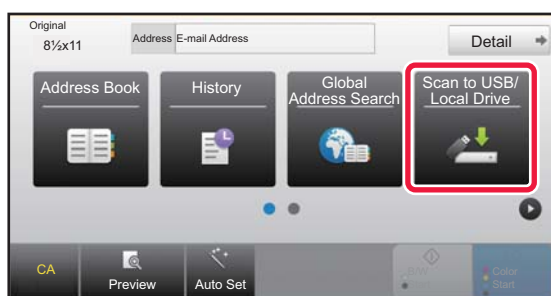


Place the original.

Place the original in the document feeder tray of the automatic document feeder, or on the document glass.

▶ [PLACING ORIGINALS \(page 16\)](#)

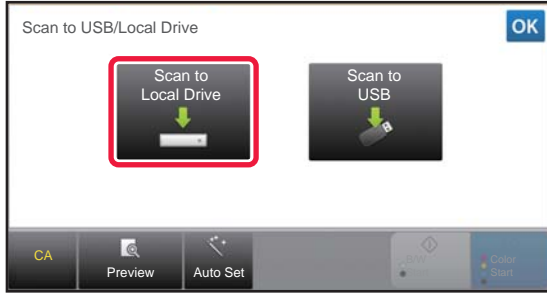
4



Tap the [Scan to USB/Local Drive] key.



5



Tap the [Scan to Local Drive] key.

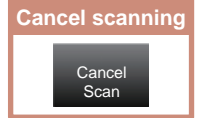
6



Tap the [Colour Start] key or [B/W Start] key.

To check a preview of a document, tap the [Preview] key.

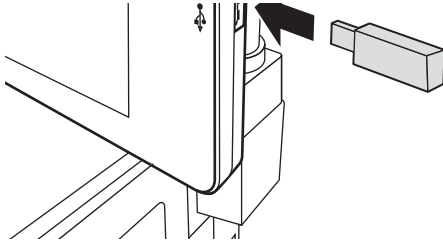
▶ [PREVIEW SCREEN \(page 15\)](#)





Scan to USB memory device

1



Connect the USB memory device to the machine.

- Use FAT32 or NTFS format for USB memory device.
- When the format of the USB memory device is FAT32, use a 32 GB or less USB memory device.

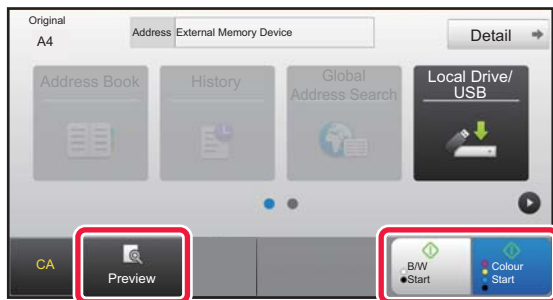
2



When a screen for selecting the action appears, tap [Scan to External Memory Device].

- To select detailed settings in normal mode, select the [Perform Detail Setting] checkbox .
- ▶ [BASE SCREEN OF SCANNER MODE \(page 48\)](#)
- If the machine/device save screen is open, this screen will not appear.

3



Tap the [Colour Start] key or [B/W Start] key.

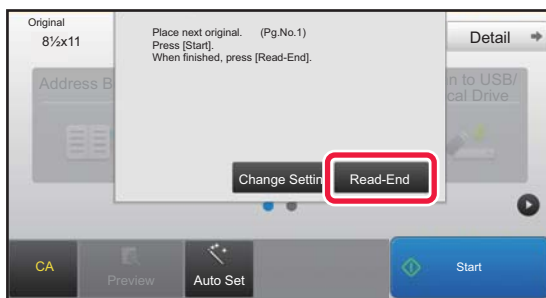
To check a preview of a document, tap the [Preview] key.

- ▶ [PREVIEW SCREEN \(page 15\)](#)

Cancel scanning

Cancel Scan

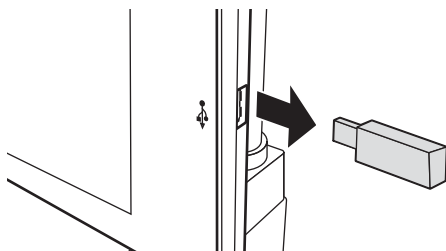
4



After scanning all originals, tap the [Read-End] key.

When you scan the original using the automatic document feeder, this screen does not appear.

5



Check the [Sending data has been completed.] message, and remove the USB memory device from the machine.



PRINTING A SAVED FILE

You can retrieve a file stored by document filing and print or transmit the file. You can also print files saved in a USB memory device or a shared folder. The steps for printing the "Copy_20201029_135043" file saved in the main folder are explained below.

1



Press the [Home Screen] key.
Home screen appears.

2

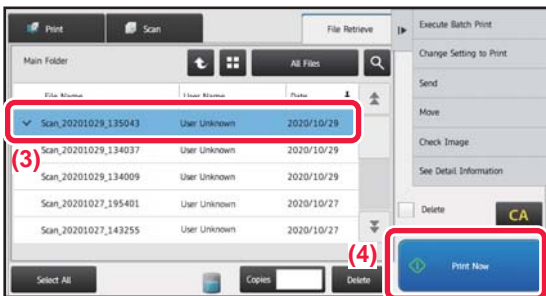


Tap the [Job Management] mode icon.

3



Select the file and print.
(1) Tap the [File Retrieve] key.
(2) Tap the [Main Folder] key.



(3) Tap the key of the file that you wish to print.
In this case, tap the "Copy_20201029_135043" key. To check a preview of the printed image, tap [Check Image] on the action panel. If you want to delete the file after printing, tap [Print and Delete the Data] on the action panel so that appears.
(4) Tap the [Print Now] key.



MANUAL FINISHING

This section explains the basic procedures for using the manual finishing function.

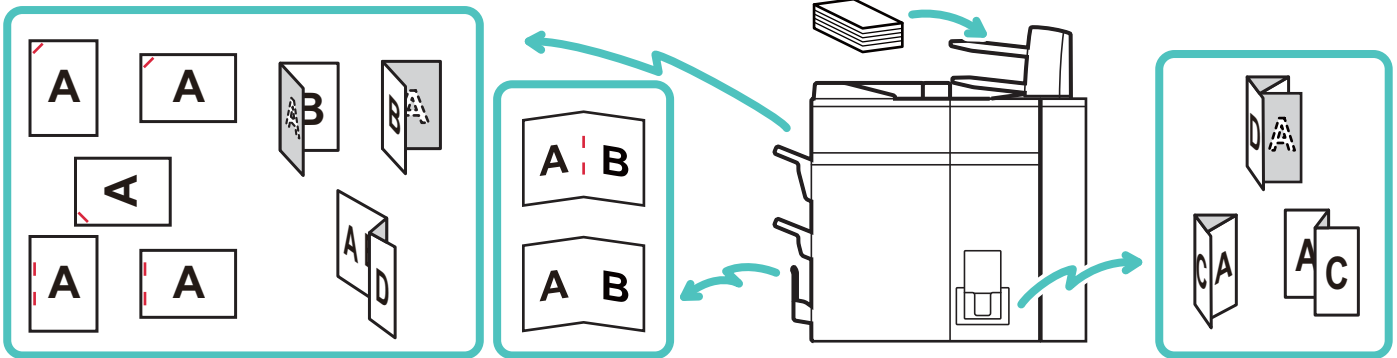
▶ MANUAL FINISHING	56
▶ USING MANUAL FINISHING	56



MANUAL FINISHING

In manual finishing mode, you can set for finish on copied or printed pages.

You can select the manual finishing mode if the inserter is installed. When the finisher (large stacker), saddle stitch finisher (large stacker), punch module, or folding unit is installed, finishing operations, such as stapling, punching or folding can be performed.



USING MANUAL FINISHING

The basic operation for manual finishing is explained below.

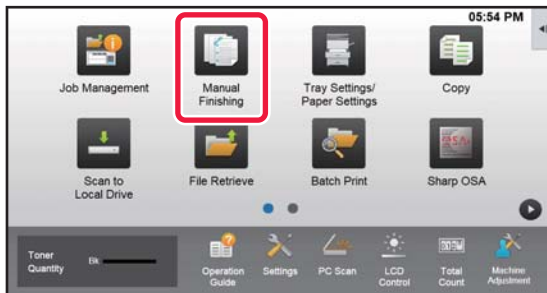
1



Press the [Home Screen] key.

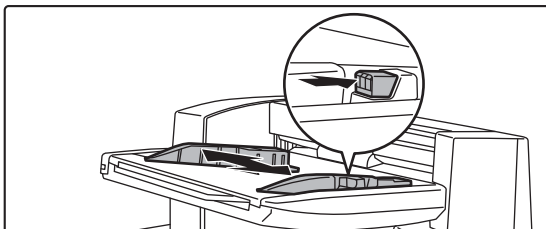
The Home screen appears.

2



Tap the [Manual Finishing] mode icon.

3



Set the guides to the size of the paper.

Grasp the guide lock lever to adjust the guide.

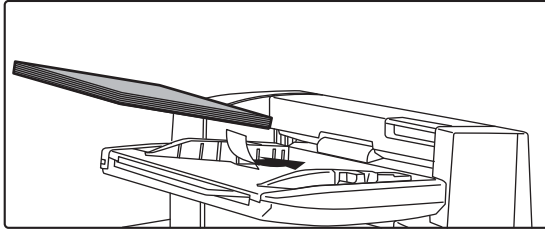
When you have finished the adjustment, release the lock lever.



When loading paper larger than 8-1/2" × 11"R, or A4R, extend the bypass tray all the way out. If it is not pulled all the way out, the size of the loaded paper will not be detected correctly.



4



Load paper into the upper or lower tray.

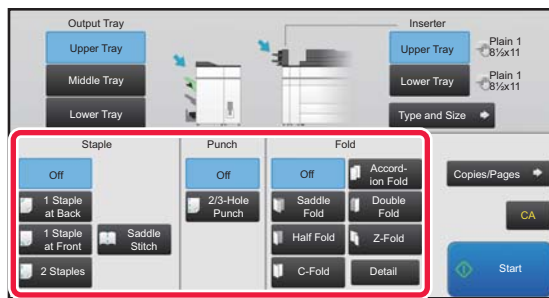
The paper orientation varies depending on the manual finishing function.

▶ [PAPER LOADING ORIENTATION \(page 58\)](#)



- Up to 200 sheets of paper can be loaded into each of the upper and lower trays.
- Insert the paper along the guides all the way into the tray.
- If the guide width is not correctly adjusted to match the paper width, paper may be jammed, skewed, or crease. Adjust the paper guides to fit the width of the paper.

5



Select the appropriate finishing method and change the paper tray or output tray as required.

6

Tap the [Start] key to begin manual finishing.

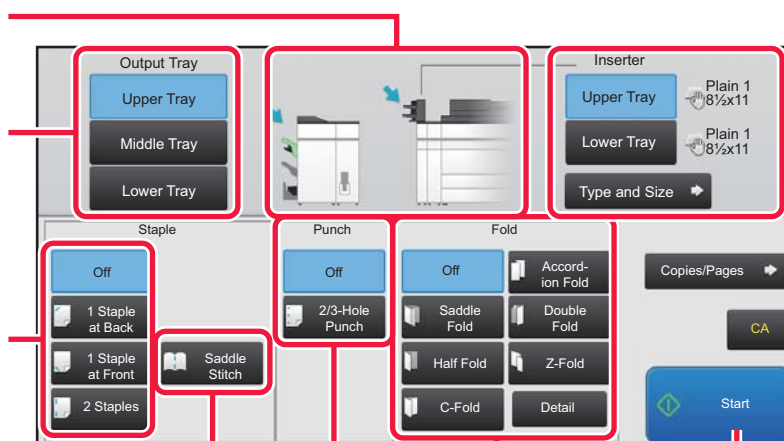
BASE SCREEN OF MANUAL FINISHING MODE

Shows the selected paper and output trays.

Selects an output tray for finished paper.

Staples each set of output.
Selects a staple position.

Staples the center of the booklet and folds the booklet along the center.
Trims the excessive parts of booklet folded along the center.



Punches holes in paper.

Performs paper folding.
Selects the type of folding.

Selects a paper tray for finishing.
Tap the [Type and Size] key to set the paper type and paper size.

Sets the number of copies for output and the number of sheets per set.

Resets all settings.

Starts finishing.





PAPER LOADING ORIENTATION

When using the staple, punch or the paper folding function, the original must be placed as shown below to enable stapling or punching in the desired position on the paper.

STAPLE

- To use the staple function, you need to mount a finisher (large stacker) or saddle stitch finisher (large stacker).
- To use the saddle stitch function, you need to mount a saddle stitch finisher (large stacker).

Touch panel key	Orientation	Result
1 Staple at Back		
1 Staple at Front		
2 Staples		
Saddle Stitch		

PUNCH

A punch module is required for paper punch.

Touch panel key	Orientation	Result
2/3-Hole Punch		

FOLD

- A folding unit is required to be installed in order to use paper folding functions other than saddle folds.
- To use the saddle fold function, you need to mount a saddle stitch finisher (large stacker).

Touch panel key	Orientation	Result
Saddle Fold		
Half Fold		
C-Fold		
Accord-ion Fold		
Double Fold		
Z-Fold		



SETTING MODE

The setting mode let you adjust the operation of the machine to suit the needs of your workplace. This section briefly introduces several of the setting mode. For detailed explanations of the system settings, see "SETTING MODE" in the User's Manual.

▶ SETTING MODE	60
----------------------	----



SETTING MODE

The date and time can be set, scan destinations can be stored, document filing folders can be created, and various other settings related to the operation of the machine can be configured in the setting mode screen. The procedure for opening the setting mode screen and the items in the screen are explained below.

DISPLAYING THE SETTING MODE ON THE MACHINE

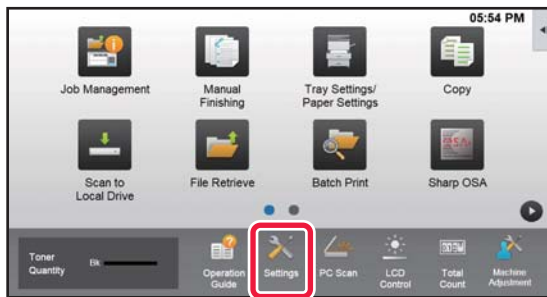
1



Press the [Home Screen] key.

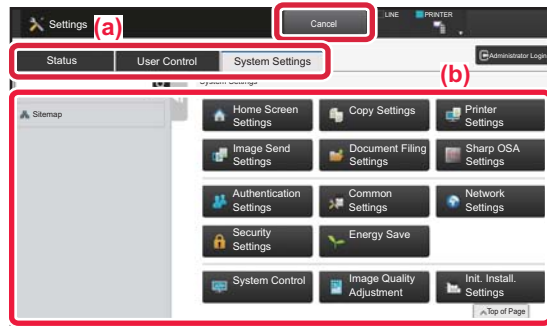
Home screen appears.

2



Tap the [Settings] key.

The setting mode screen appears.



Tap the item that you want to set on menu tab (a) or setting menu (b).

To exit setting mode, tap the [Cancel] key.

▶ [Setting mode when an administrator is logged in \(page 62\)](#)



WHAT YOU CAN DO IN THE SETTING MODE

The following settings can be configured in setting mode.

Some settings may not appear on the touch panel of the machine, or in the Web browser on your computer. Some settings may not appear due to the specifications of your machine and the peripheral devices that are installed.

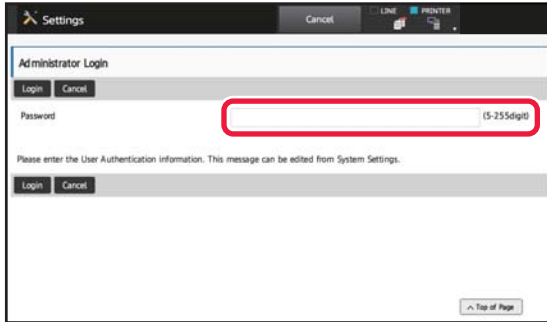
Menu	Overview	
Status	Displays paper tray information and device information.	
Address Book	Use to edit the address book.	
Document Operations	Use to perform actions on a file using the Document Filing function.	
User Control	This is used to store, edit, and delete users when user authentication is enabled.	
System Settings	Configure the main settings for the machine such as date settings and paper tray settings. You can configure the following settings.	
	Home Screen Settings	You can select settings for the machine's home screen, such as changing the home screen background.
	Copy Settings	You can select copy settings.
	Printer Settings	You can select print settings.
	Image Send Settings	Configure settings for image send, such as Scan to E-mail.
	Document Filing Settings	You can select Document Filing settings.
	Sharp OSA Settings	You can select Sharp OSA settings.
	Authentication Settings	Configure the user authentication method. Alternatively, configure the IC card.
	Common Settings	You can configure machine settings such as date settings and tray settings.
	Network Settings	You can configure network settings such as Interface Settings and NAS settings.
	Security Settings	You can configure machine security settings such as authentication and changing the administrator password.
	Energy Save	The machine's power consumption can be reduced by Eco Mode setting.
	System Control	You can configure machine backup and job log settings.
Image Quality Adjustment	You can perform image adjustment on the machine.	
Initial Installation Settings	This is a group of settings that are required when you initially install the machine.	





Setting mode when an administrator is logged in

An administrator can configure settings that are more advanced than the settings available to a guest or user. When user authentication is enabled, settings may be allowed without entering the administrator password based on the rights of the logged in user. For the state of the settings, ask the administrator of the machine.



When you select an item in setting mode that requires administrator login, the administrator login screen will appear.

For the items available in setting mode when an administrator is logged in, see "SETTING MODE" in the User's Manual.

Please note

- For information on your operating system, please refer to your operating system manual or the online Help function.
- The explanations of screens and procedures in a Windows environment are primarily for Windows 10®. The screens may vary depending on the version of the operating system or the software application.
- The explanations of screens and procedures in a macOS environment are based on macOS 10.12 in the case of macOS. The screens may vary depending on the version of the operating system or the software application.
- Wherever "MX-xxxx" appears in this manual, please substitute your model name for "xxxx".
- Considerable care has been taken in preparing this manual. If you have any comments or concerns about the manual, please contact your dealer or nearest SHARP Service Department.
- This product has undergone strict quality control and inspection procedures. In the unlikely event that a defect or other problem is discovered, please contact your dealer or nearest SHARP Service Department.
- Aside from instances provided for by law, SHARP is not responsible for failures occurring during the use of the product or its options, or failures due to incorrect operation of the product and its options, or other failures, or for any damage that occurs due to use of the product.

Warning

- Reproduction, adaptation or translation of the contents of the manual without prior written permission is prohibited, except as allowed under copyright laws.
- All information in this manual is subject to change without notice.

Illustrations and the operation panel and touch panel shown in this manual

The peripheral devices are generally optional, however, some models include certain peripheral devices as standard equipment. The explanations in this manual assume that a multi bypass tray, large capacity tray, saddle stitch finisher, punch module, paper pass unit and curl correction unit is installed on the MX-M1206.

For some functions and procedures, the explanations assume that devices other than the above are installed.

<p>The display screens, messages, and key names shown in the manual may differ from those on the actual machine due to product improvements and modifications.</p>
--

SHARP[®]
SHARP CORPORATION